

LOC/DME I-FUNQ 111.5 Chan 52	APP CRS 337°	Rwy Idg 6081 TDZE 50 Apt Elev 54
--	------------------------	---

ILS or LOC RWY 34

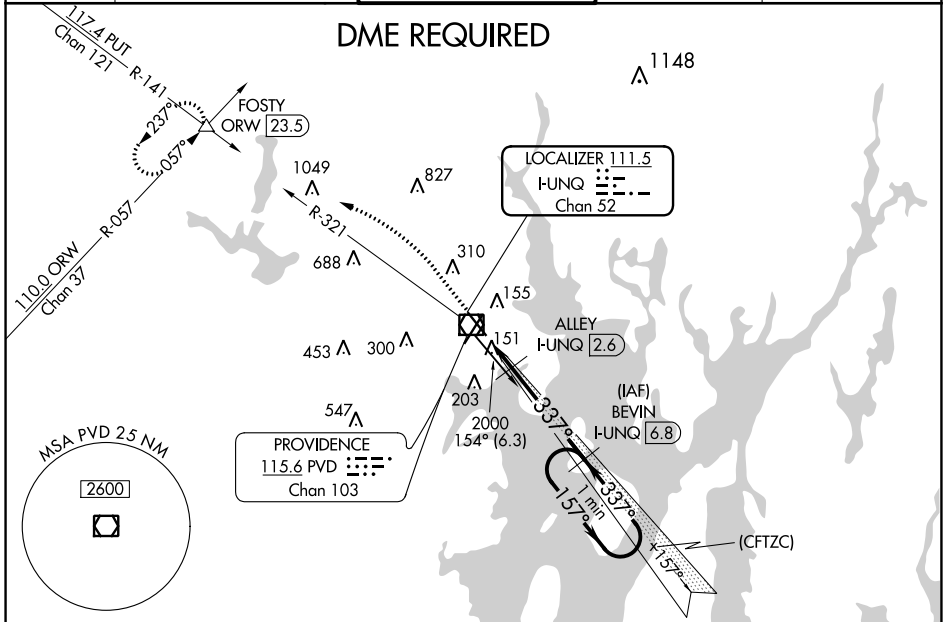
THEODORE FRANCIS GREEN STATE (PVD)

DME required. Rwy 34 helicopter visibility reduction below RVR 4000 NA. For inop MALSRS, increase S-LOC Cat A/B visibility to RVR 5500, and Cat C/D visibility to RVR 5000. Autopilot coupled approach NA below 300.

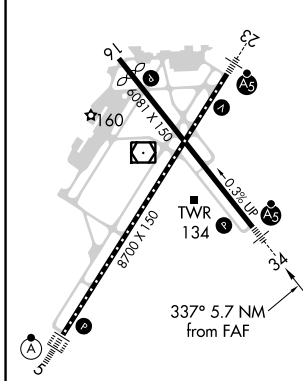
MALSRS
AS

MISSED APPROACH: Climb to 700 then climbing left turn to 2500 on heading 300° and on PVD VOR/DME R-321 to FOSTY INT/ORW 23.5 DME and hold.

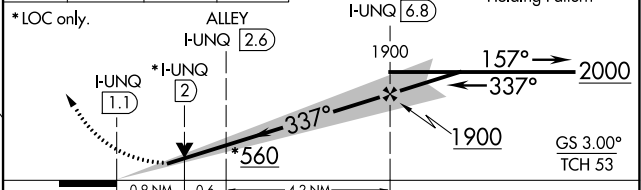
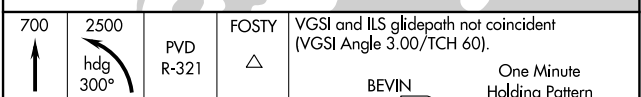
D-ATIS 124.2	PROVIDENCE APP CON * 123.675 244.875	PROVIDENCE TOWER * 120.7 (CTAF) 257.8	GND CON 121.9 348.6	CLNC DEL 126.65 348.6
------------------------	--	---	-------------------------------	---------------------------------



ELEV 54	TDZE 50
---------	---------



REIL Rwy 5
TDZ/CL Rwy 5
REIL Rwy 16 and 23
HIRL Rwy 5-23 and 16-34



CATEGORY	A	B	C	D
S-ILS 34		331/40	281 (300-3/4)	
S-LOC 34		380/40	330 (400-3/4)	
CIRCLING	560-1 506 (600-1)	640-1 586 (600-1)	640-1½ 586 (600-1½)	860-2½ 806 (900-2½)

NE-1, 25 FEB 2021 to 25 MAR 2021

NE-1, 25 FEB 2021 to 25 MAR 2021