

VOR/DME PVD 115.6 Chan 103	APP CRS 041°	Rwy Idg 8700 TDZE 53 Apt Elev 54
--	------------------------	---

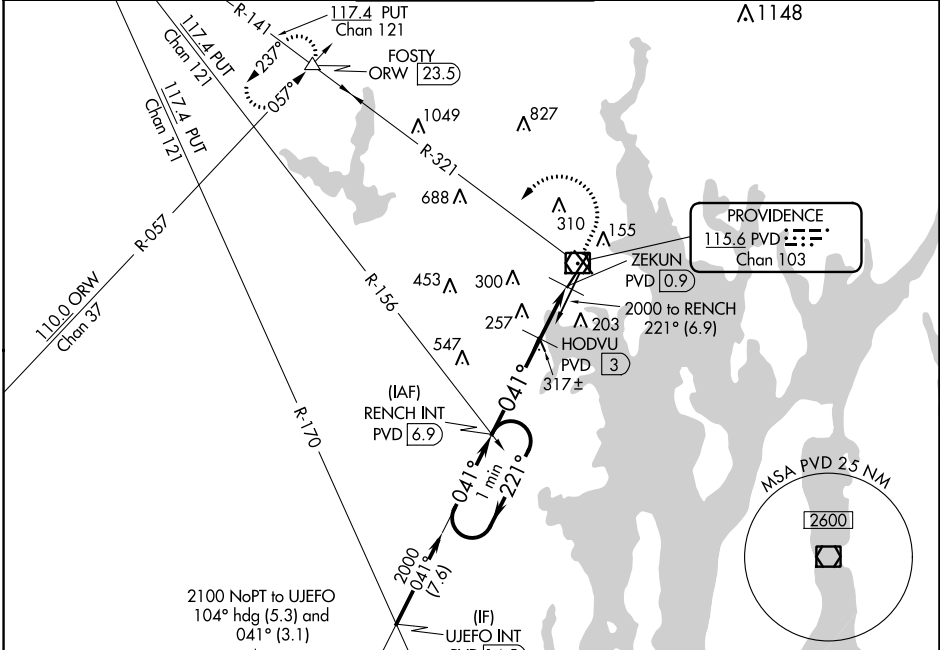
VOR RWY 5

THEODORE FRANCIS GREEN STATE (PVD)

⚠ For inop ALS, increase S-5 Cat C/D visibility to 2 SM. When control tower closed: increase S-5 Cats A and B visibility to 3/4 SM, and S-5 Cats C and D visibility to 1 3/4 SM. When control tower closed: HODVU fix minimums: increase S-5 Cats A and B visibility to 3/4 SM, and S-5 Cats C and D visibility to 1 3/4 SM.

ALSF-2
A MISSED APPROACH: Climb to 800 then climbing left turn to 2500 on PVD VOR/DME R-321 to FOSTY INT/ORW 23.5 DME and hold.

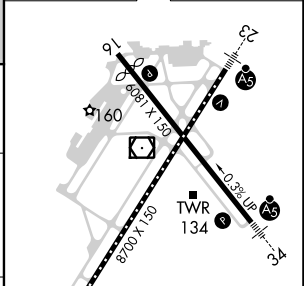
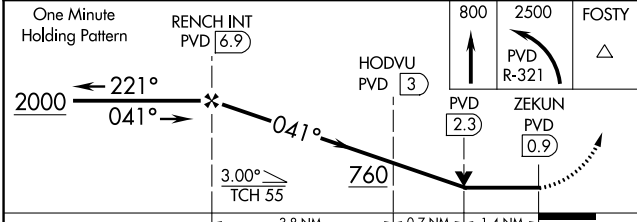
D-ATIS 124.2	PROVIDENCE APP CON ★ 123.675 244.875	PROVIDENCE TOWER ★ 120.7 (CTAF) 257.8	GND CON 121.9 348.6	CLNC DEL 126.65 348.6
------------------------	--	---	-------------------------------	---------------------------------



NE-1, 25 FEB 2021 to 25 MAR 2021

NE-1, 25 FEB 2021 to 25 MAR 2021

ELEV 54	TDZE 53
---------	---------



CATEGORY	A	B	C	D
S-5	760/24	707 (800-1/2)	760-1 5/8	707 (800-1 5/8)
C CIRCLING	760-1	706 (800-1)	760-2 706 (800-2)	860-2 1/2 806 (900-2 1/2)
HODVU FIX MINIMUMS				
S-5	560/24	507 (600-1/2)	560/55	507 (600-1)
C CIRCLING	560-1 506 (600-1)	640-1 586 (600-1)	640-1 1/2 586 (600-1 1/2)	860-2 1/2 806 (900-2 1/2)

REIL Rwy 5
TDZ/CL Rwy 5 **1**
REIL Rwy 16
and 23 **1**
HIRL Rwy 5-23
and 16-34 **1**

041° 5.9 NM from FAF

FAF to MAP 5.9 NM

Knots	60	90	120	150	180
Min:Sec	5:54	3:56	2:57	2:22	1:58