

VOR/DME PVD <b>115.6</b> Chan <b>103</b>	APP CRS <b>165°</b>	Rwy Idg TDZE Apt Elev <b>5516</b> <b>54</b> <b>54</b>
--	------------------------	--

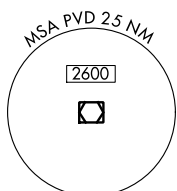
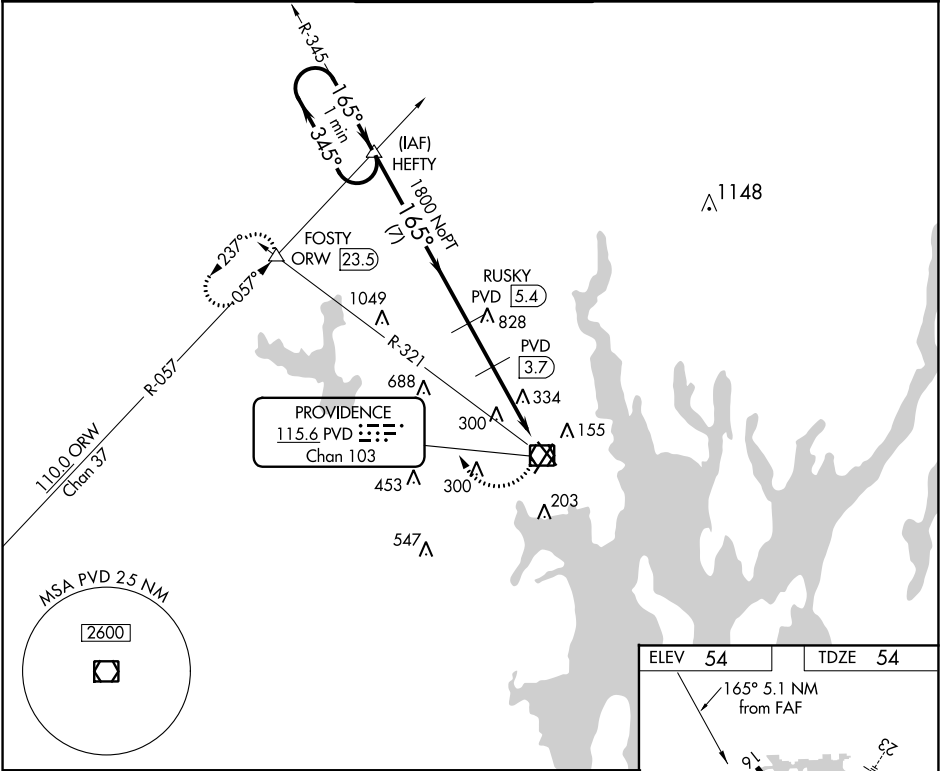
# VOR/DME RWY 16

THEODORE FRANCIS GREEN STATE (PVD)

**▼** Rwy 16 helicopter visibility reduction below  $\frac{3}{4}$  SM NA.  
**▲**

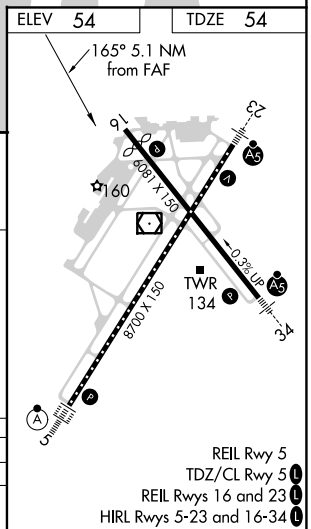
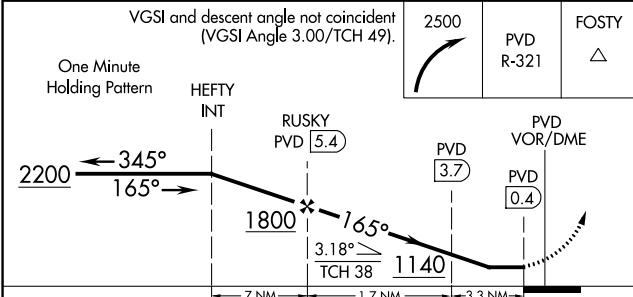
MISSED APPROACH: Climbing right turn to 2500 via PVD R-321 to FOSTY INT and hold.

D-ATIS <b>124.2</b>	PROVIDENCE APP CON * <b>123.675 244.875</b>	PROVIDENCE TOWER * <b>120.7</b> (CTAF) <b>0 257.8</b>	GND CON <b>121.9 348.6</b>	CLNC DEL <b>126.65 348.6</b>
------------------------	--	--	-------------------------------	---------------------------------



NE-1, 25 FEB 2021 to 25 MAR 2021

NE-1, 25 FEB 2021 to 25 MAR 2021



CATEGORY	A	B	C	D
S-16	600-1	546 (600-1)	600-1 $\frac{5}{8}$	546 (600-1 $\frac{5}{8}$ )
<b>CIRCLING</b>	600-1 546 (600-1)	640-1 586 (600-1)	640-1 $\frac{5}{8}$ 586 (600-1 $\frac{5}{8}$ )	860-2 $\frac{1}{2}$ 806 (900-2 $\frac{1}{2}$ )

REIL Rwy 5  
TDZ/CL Rwy 5 **1**  
REIL Rwys 16 and 23 **1**  
HIRL Rwys 5-23 and 16-34 **1**