

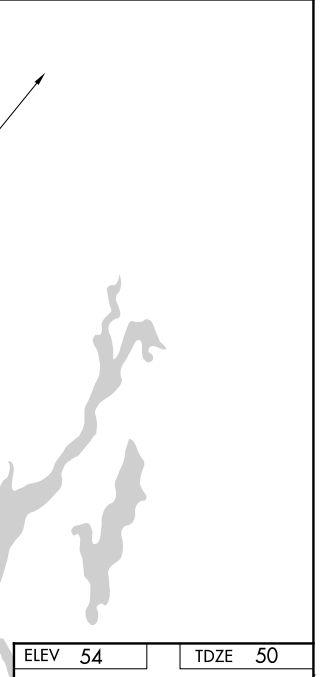
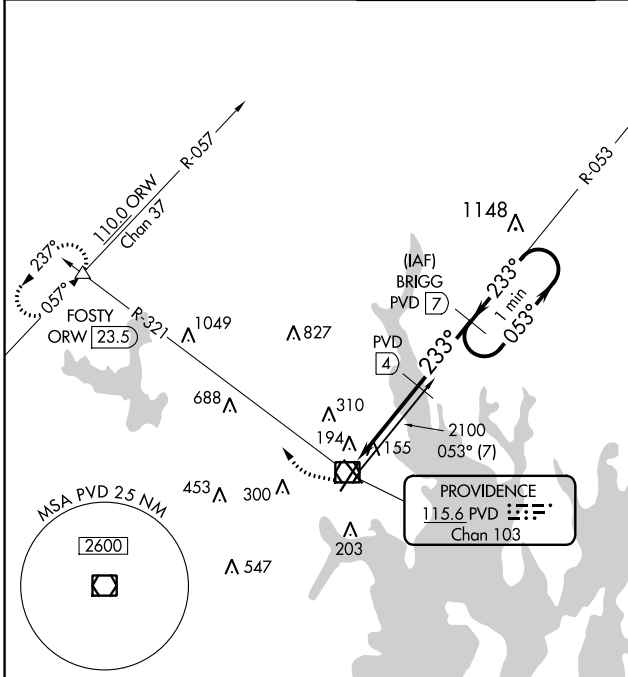
VOR/DME PVD <b>115.6</b> Chan <b>103</b>	APP CRS <b>233°</b>	Rwy Idg TDZE Apt Elev	<b>8700</b> <b>50</b> <b>54</b>
--	------------------------	-----------------------------	---------------------------------------

# VOR/DME RWY 23

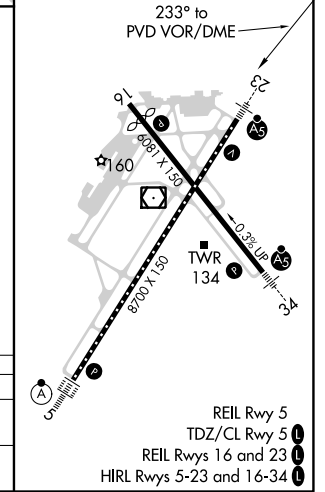
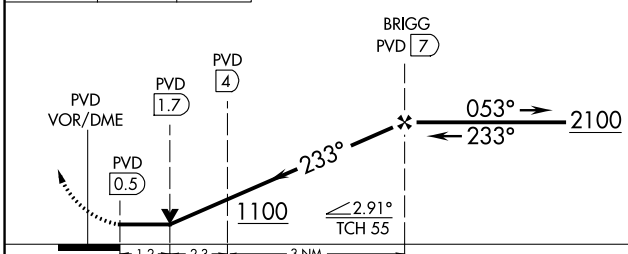
THEODORE FRANCIS GREEN STATE (PVD)

For inoperative MALSRL increase S-23 Cats A, B, and C visibility to RVR 5000, Cat D visibility to RVR 6000.	MALSRL	MISSED APPROACH: Climbing right turn to 2500 via PVD R-321 to FOSTY INT and hold.
	MALSRL	

D-ATIS <b>124.2</b>	PROVIDENCE APP CON * <b>123.675 244.875</b>	PROVIDENCE TOWER * <b>120.7</b> (CTAF) <b>257.8</b>	GND CON <b>121.9 348.6</b>	CLNC DEL <b>126.65 348.6</b>
------------------------	--	--	-------------------------------	---------------------------------



2500	PVD R-321	FOSTY	VGSI and descent angle not coincident (VGSI Angle 3.00/TCH 41).
One Minute Holding Pattern			



CATEGORY	A	B	C	D
S-23	500/40	450 (500-¾)	500/45	500/50
			450 (500-¾)	450 (500-1)
CIRCLING	560-1	640-1	640-1½	860-2½
	506 (600-1)	586 (600-1)	586 (600-1½)	806 (900-2½)

NE-1, 25 FEB 2021 to 25 MAR 2021

NE-1, 25 FEB 2021 to 25 MAR 2021