

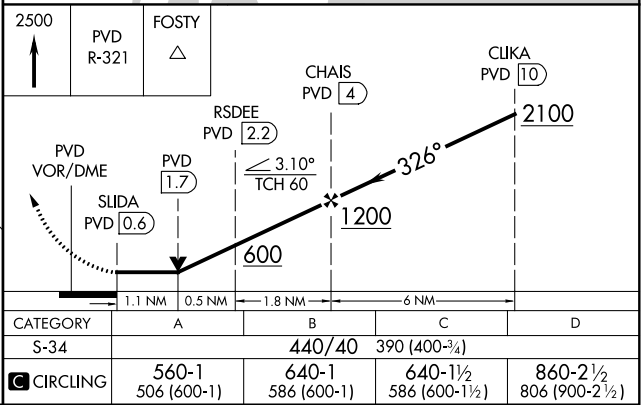
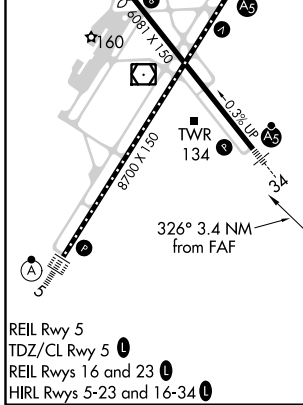
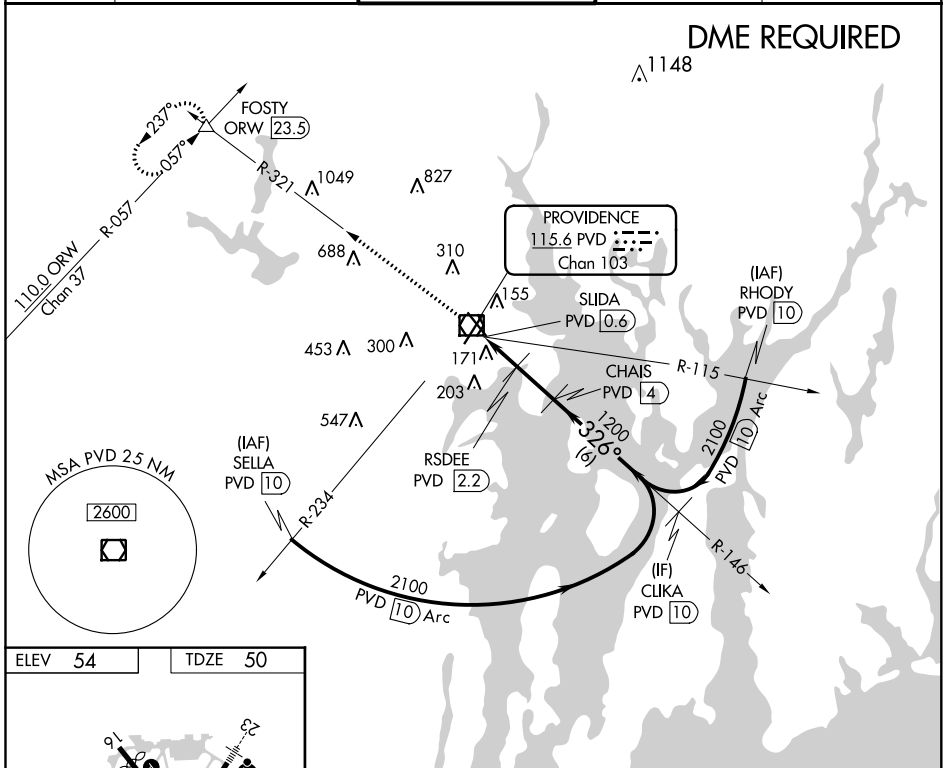
VOR/DME PVD 115.6 Chan 103	APP CRS 326°	Rwy Idg TDZE Apt Elev 6081 50 54
--	------------------------	--

VOR Z RWY 34

THEODORE FRANCIS GREEN STATE (PVD)

⚠ Rwy 34 helicopter visibility reduction below RVR 4000 NA. ⚠ DME required. For inop ALS, increase Cat A/B visibility to RVR 5500, and Cat C/D to RVR 6000.	MALSR 	MISSED APPROACH: Climb to 2500 on PVD VOR/DME R-321 to FOSTY INT/ ORW 23.5 DME and hold.
--	-----------	--

D-ATIS 124.2	PROVIDENCE APP CON * 123.675 244.875	PROVIDENCE TOWER * 120.7 (CTAF) 0 257.8	GND CON 121.9 348.6	CLNC DEL 126.65 348.6
------------------------	--	--	-------------------------------	---------------------------------



NE-1, 25 FEB 2021 to 25 MAR 2021

NE-1, 25 FEB 2021 to 25 MAR 2021