

WAAS CH <b>90116</b> <b>W01A</b>	APP CRS <b>013°</b>	Rwy Idg TDZE Apt Elev	<b>6000</b> <b>467</b> <b>488</b>
--	------------------------	-----------------------------	---

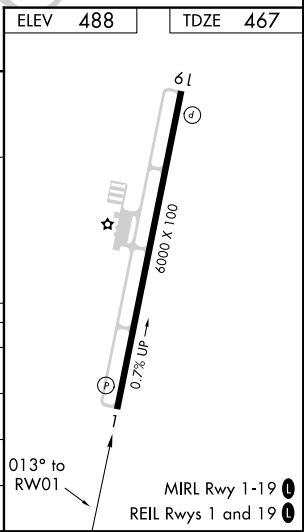
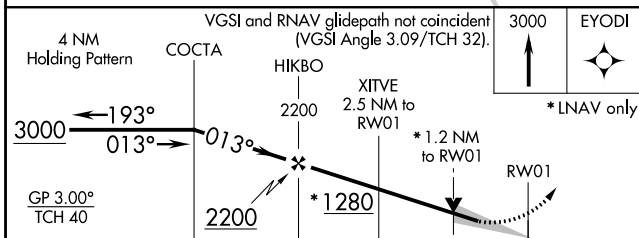
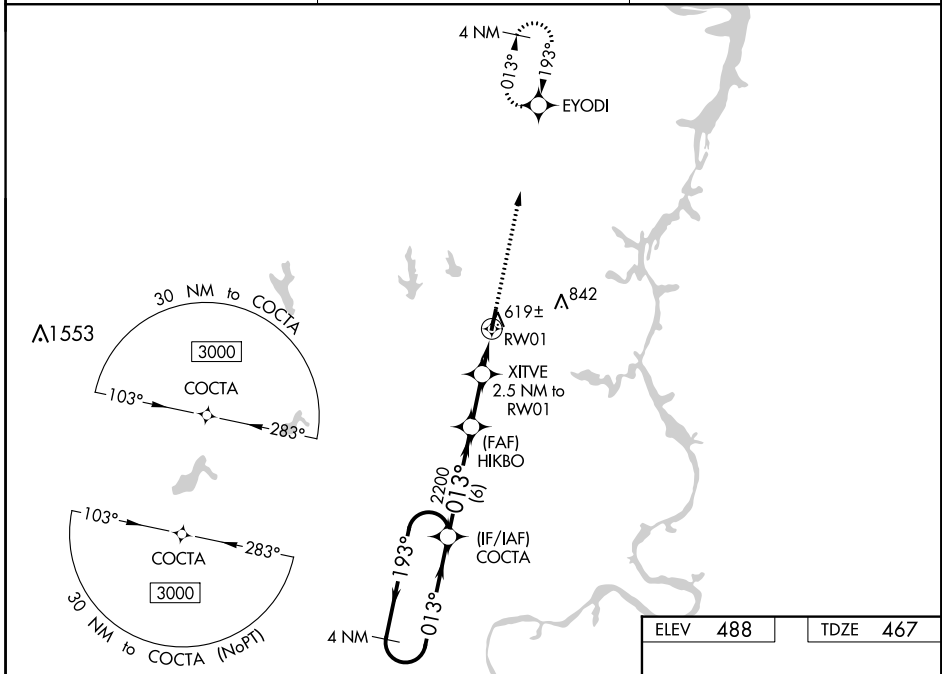
# RNAV (GPS) RWY 1

BEECH RIVER RGNL (PVE)

**⚠** For uncompensated Baro-VNAV systems, LNAV/VNAV NA below -15°C (5° F) or above 54°C (130°F).  
**⚠** DME/DMÉ RNP-0.3 NA. When local altimeter setting not received, use Jackson altimeter setting; increase LPV all Cats DA to 807 and all Cats visibility 3/8 mile; increase LNAV/VNAV all Cats DA to 911 and all Cats visibility 3/8 mile; increase all MDA 100 feet and LNAV Cats C/D and Circling Cat C visibility 1/2 mile and Circling Cat D visibility 1/2 mile. Baro-VNAV and VDP NA when using Jackson altimeter setting.

**MISSED APPROACH:** Climb to 3000 direct EYODI and hold.

AWOS-3 <b>118,125</b>	MEMPHIS CENTER <b>125.85 379.25</b>	UNICOM <b>123.0 (CTAF) 0</b>
--------------------------	--	---------------------------------



CATEGORY	A	B	C	D
LPV DA		717-7/8	250 (300-7/8)	
LNAV/VNAV DA		821-1 1/4	354 (400-1 1/4)	
LNAV MDA	880-1	413 (400-1)	880-1 1/8	413 (400-1 1/8)
<b>C</b> CIRCLING	940-1 452 (500-1)	980-1 492 (500-1)	1000-1 1/2 512 (600-1 1/2)	1200-2 1/4 712 (800-2 1/4)

SE-1, 25 FEB 2021 to 25 MAR 2021

SE-1, 25 FEB 2021 to 25 MAR 2021