

|  |                        |                             |   |
|--|------------------------|-----------------------------|---|
| WAAS<br>CH <b>97316</b><br><b>W19A</b> | APP CRS<br><b>193°</b> | Rwy Idg<br>TDZE<br>Apt Elev | <b>6000</b><br><b>488</b><br><b>488</b> |
|--|------------------------|-----------------------------|---|

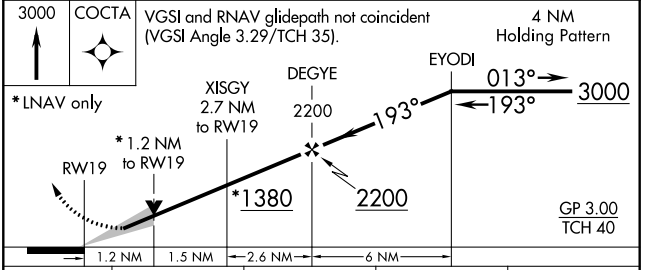
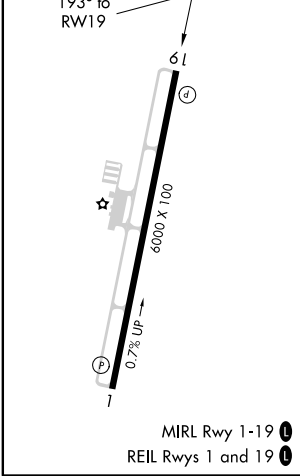
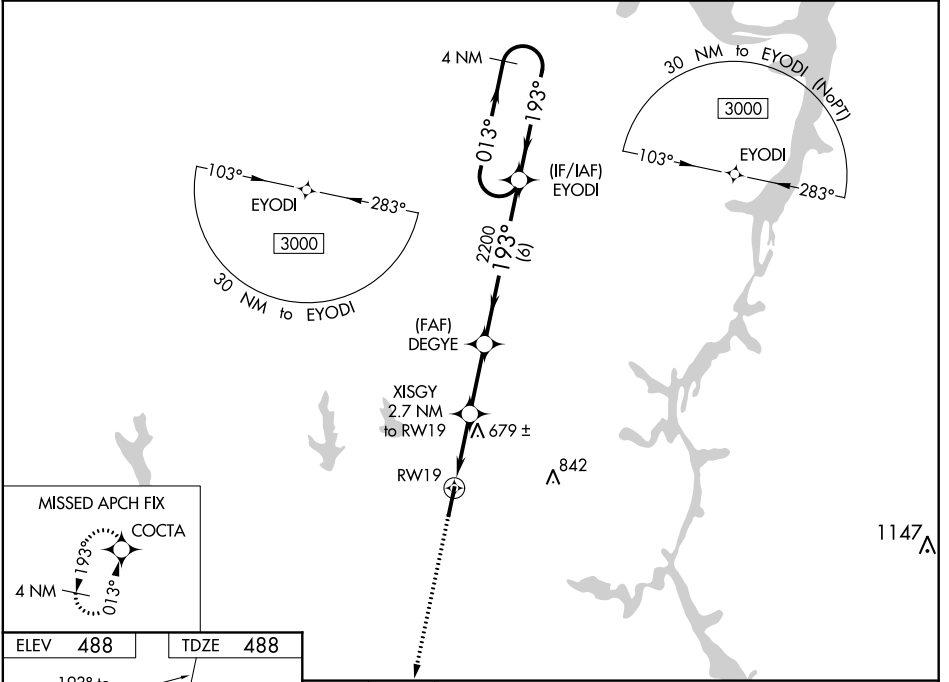
# RNAV (GPS) RWY 19

BEECH RIVER RGNL (PVE)

**⚠** For uncompensated Baro-VNAV systems, LNAV/VNAV NA below -15°C (5 °F) or above 54 °C (130°F).  
**⚠** DME/DME RNP-0.3 NA. When local altimeter setting not received, use Jackson altimeter setting: increase LPV all Cats DA to 828 and all Cats visibility ¼ mile; increase LNAV/VNAV all Cats DA to 890 and all Cats visibility ⅓ mile; increase all MDA 100 feet and LNAV Cats C/D and Circling Cat C visibility ¼ mile and Circling Cat D visibility ½ mile. VDP and Baro-VNAV NA when using Jackson altimeter setting.

MISSED APPROACH: Climb to 3000 direct COCTA and hold.

|                          |  |                                 |
|--------------------------|--|---------------------------------|
| AWOS-3<br><b>118.125</b> | MEMPHIS CENTER<br><b>125.85 379.25</b> | UNICOM<br><b>123.0 (CTAF) ①</b> |
|--------------------------|--|---------------------------------|



| CATEGORY                                     | A                    | B                    | C                             | D                             |
|--|----------------------|----------------------|-------------------------------|-------------------------------|
| LPV DA                                       |                      | 738-7/8              | 250 (300-7/8)                 |                               |
| LNAV/VNAV DA                                 |                      | 800-1                | 312 (400-1)                   |                               |
| LNAV MDA                                     | 940-1                | 452 (500-1)          | 940-1 3/8                     | 452 (500-1 3/8)               |
| <input checked="" type="checkbox"/> CIRCLING | 940-1<br>452 (500-1) | 980-1<br>492 (500-1) | 1000-1 1/2<br>512 (600-1 1/2) | 1200-2 1/4<br>712 (800-2 1/4) |

SE-1, 25 FEB 2021 to 25 MAR 2021

SE-1, 25 FEB 2021 to 25 MAR 2021