

WAAS CH 97307 W13A	APP CRS 134°	Rwy Idg TDZE Apt Elev	8599 4497 4497
--	------------------------	-----------------------------	---

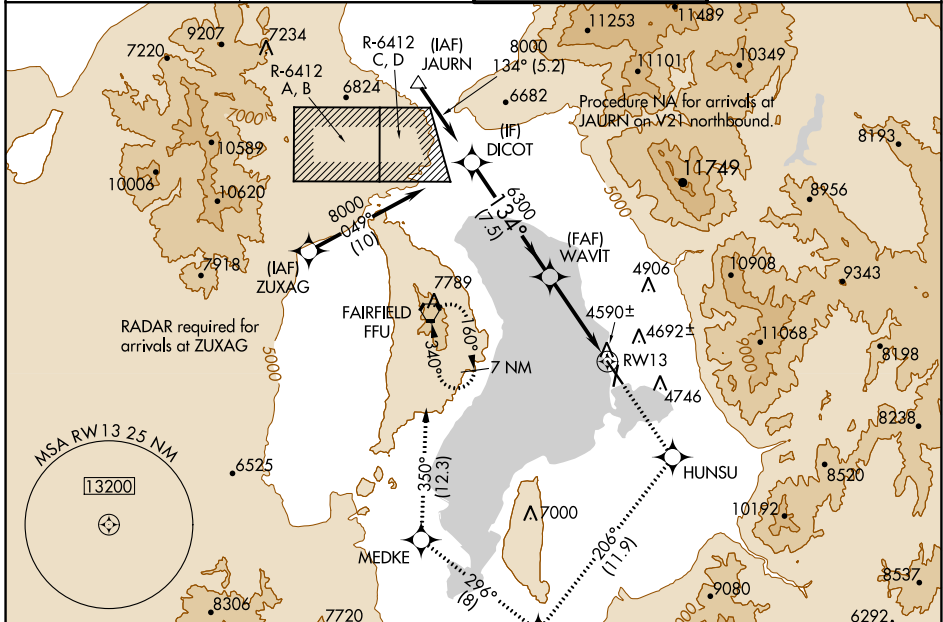
RNAV (GPS) RWY 13

PROVO MUNI (PVU)

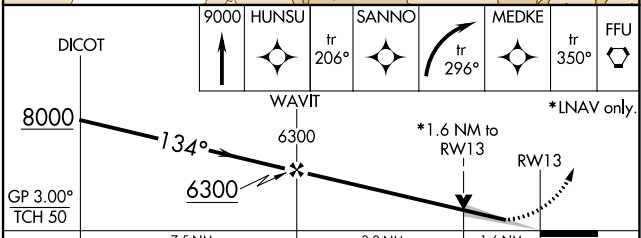
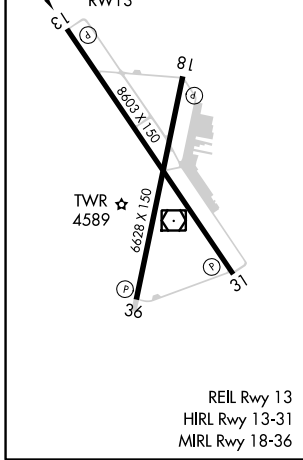
▼ For uncompensated Baro-VNAV systems, LNAV/VNAV NA below -23°C (-9°F) or above 40°C (104°F).
DME/DME RNP-0.3 NA.
Circling NA east of Rwy 18 and 31.

MISSED APPROACH: Climb to 9000 direct HUNSU and on track 206° to SANN0 and right turn on track 296° to MEDKE and on track 350° to FFU VORTAC and hold.

ATIS ★ 135.175	SALT LAKE CITY APP CON 118.85 233.7	PROVO TOWER ★ 125.3 (CTAF)	GND CON 119.4
--------------------------	---	--------------------------------------	-------------------------



ELEV 4497	D	TDZE 4497
-----------	----------	-----------



CATEGORY	A	B	C	D
LPV DA		4697- ³ / ₄	200 (200- ³ / ₄)	
LNAV/VNAV DA		4940-1 ¹ / ₂	443 (500-1 ¹ / ₂)	
LNAV MDA	5040-1	543 (600-1)	5040-1 ⁵ / ₈	543 (600-1 ⁵ / ₈)
CIRCLING	5040-1	543 (600-1)	5040-1 ⁵ / ₈ 543 (600-1 ⁵ / ₈)	5060-2 563 (600-2)

SW-4, 25 FEB 2021 to 25 MAR 2021

SW-4, 25 FEB 2021 to 25 MAR 2021