

LOC I-PWA <b>110.15</b>	APP CRS <b>175°</b>	Rwy Idg <b>6844</b>
		TDZE <b>1291</b>
		Apt Elev <b>1300</b>

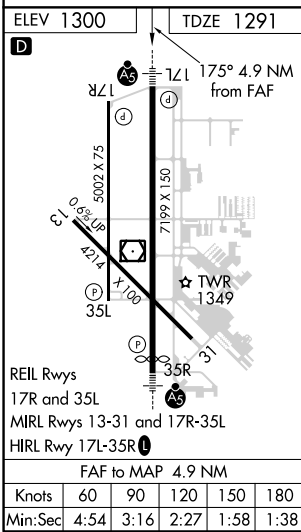
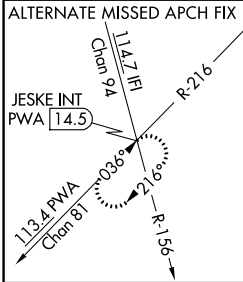
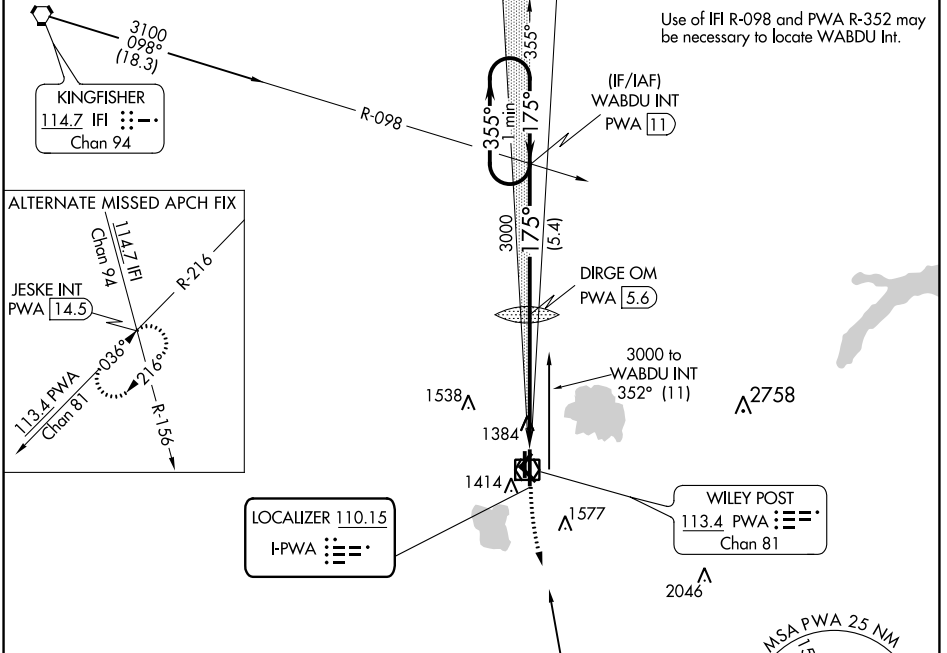
# ILS or LOC RWY 17L

WILEY POST (PWA)

**ASR** When local altimeter setting not received, use Will Rogers World altimeter setting and increase all DA 21 feet and all MDA 40 feet and increase S-LOC 17L Cat C visibility 1/4 mile.

**MALSR** MISSED APPROACH: Climb to 1800 then climbing left turn to 3000 direct IRW VORTAC and hold.

ATIS <b>128.725</b>	OKE CITY APP CON <b>124.6 266.8</b>	WILEY POST TOWER ★ <b>126.9 (CTAF) 306.9</b>	GND CON <b>121.7</b>	UNICOM <b>122.95</b>
------------------------	--	---	-------------------------	-------------------------



WABDU INT PWA 11	DIRGE OM PWA 5.6	1800	3000	IRW
		↑	↻	⬡
3000 ← 355°	175° →	3000 ↘	2926	
GS 3.00°	TCH 54	5.4 NM	4.9 NM	
CATEGORY	A	B	C	D
S-ILS 17L	1491-1/2		200 (200-1/2)	
S-LOC 17L	1660-1/2		369 (400-1/2)	
			1660-3/4	
			369 (400-3/4)	
⬢ CIRCLING	1780-1	480 (500-1)	1880-1 1/2	1880-2
			580 (600-1 1/2)	580 (600-2)

SC-1, 25 FEB 2021 to 25 MAR 2021

SC-1, 25 FEB 2021 to 25 MAR 2021