

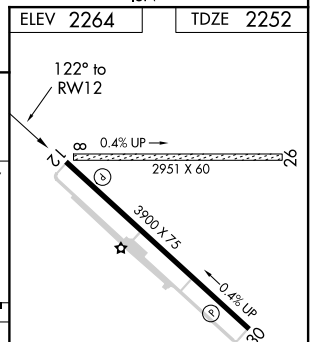
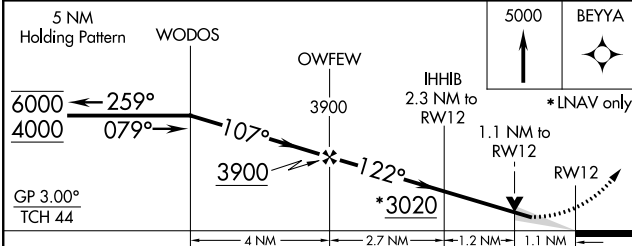
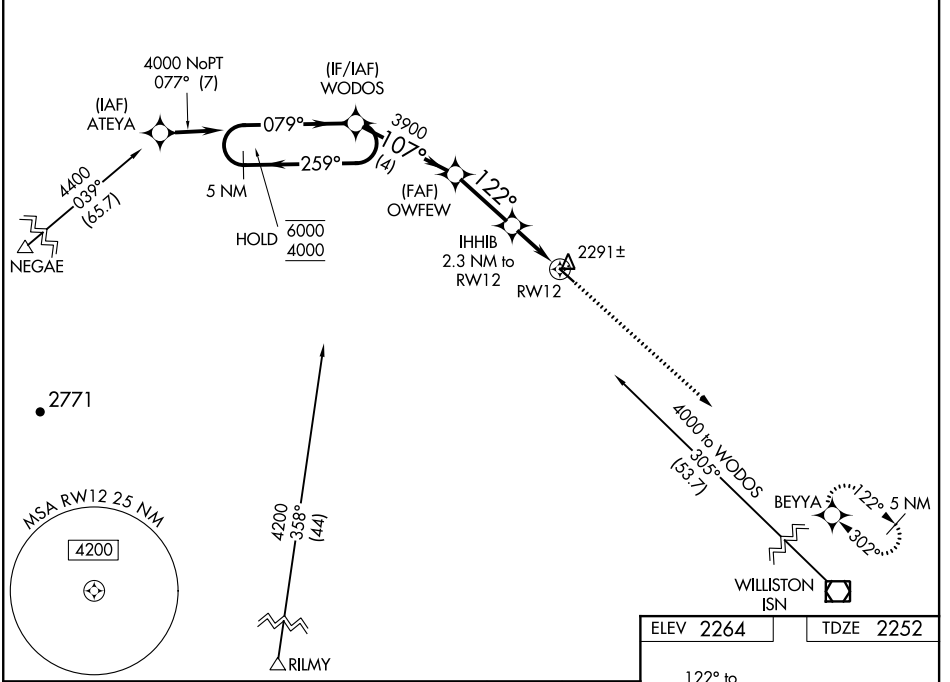
WAAS CH 97729 W12A	APP CRS 122°	Rwy Idg TDZE Apt Elev	3900 2252 2264
--	------------------------	-----------------------------	---

RNAV (GPS) RWY 12

SHER-WOOD (PWD)

RNP APCH.	MISSED APPROACH: Climb to 5000 direct BEYYA and hold.
<p>⚠ Circling Rwy 8, 26 NA at night. For uncompensated Baro-VNAV systems, LNAV/VNAV NA below -19°C or above 54°C. When local altimeter setting not received, use Williston altimeter setting.</p>	

AWOS-3 135.025	SALT LAKE CENTER 126.85 305.2	UNICOM 122.8 (CTAF) 0
--------------------------	---	---------------------------------



CATEGORY	A	B	C	D
LPV DA		2567-7/8	315 (400-7/8)	
LNNAV/VNAV DA		2617-1	365 (400-1)	
LNNAV MDA	2660-1	408 (400-1)	2660-1 1/8	408 (400-1 1/8)
C CIRCLING	2780-1	516 (600-1)	2880-1 3/4 616 (700-1 3/4)	3100-2 3/4 836 (900-2 3/4)

ELEV 2264	TDZE 2252
MIRL Rwy 12-30 0	

NW-1, 25 FEB 2021 to 25 MAR 2021

NW-1, 25 FEB 2021 to 25 MAR 2021