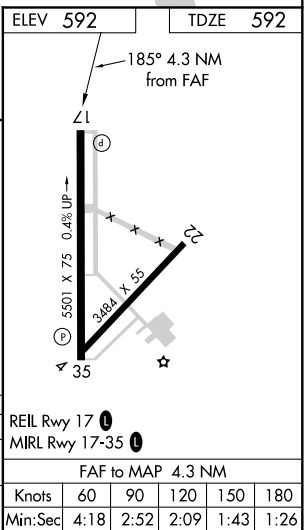
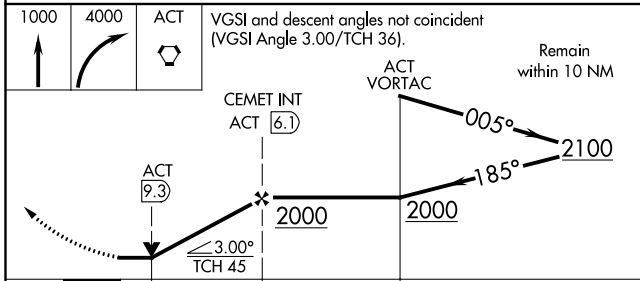
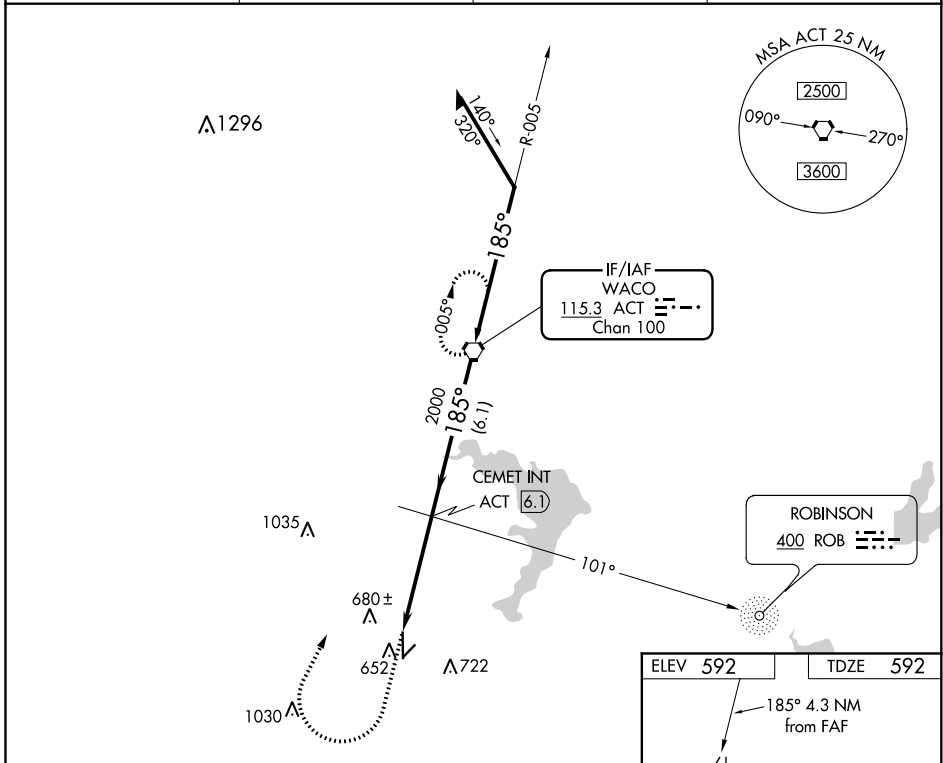


VORTAC ACT	APP CRS	Rwy Idg	5501
115.3	185°	TDZE	592
Chan 100		Apt Elev	592

VOR RWY 17

MC GREGOR EXECUTIVE (PWG)

ADF or DME required.		MISSED APPROACH: Climb to 1000 then climbing right turn to 4000 direct ACT VORTAC and hold, continue climb-in-hold to 4000.	
ASR			
AWOS-3PT	WACO APP CON *	GCO	UNICOM
135.525	127.65 352.0	121.725	122.8 (CTAF) 0



CATEGORY	A	B	C	D
S-17	980-1	388 (400-1)		NA
CIRCLING	980-1 388 (400-1)	1060-1 468 (500-1)	1060-1½ 468 (500-1½)	NA

SC-3, 25 FEB 2021 to 25 MAR 2021

SC-3, 25 FEB 2021 to 25 MAR 2021