

LOC I-PWK 109.75	APP CRS 161°	Rwy Idg 5001	TDZE 643
		Apt Elev 647	

ILS or LOC RWY 16

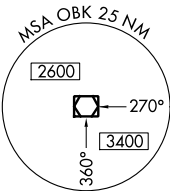
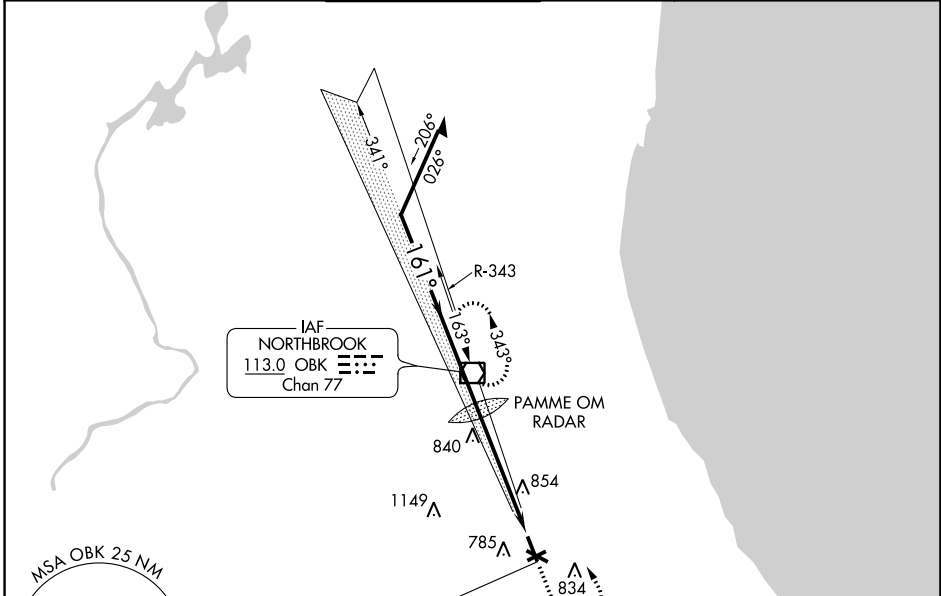
CHICAGO EXECUTIVE (PWK)

RADAR required for procedure entry.

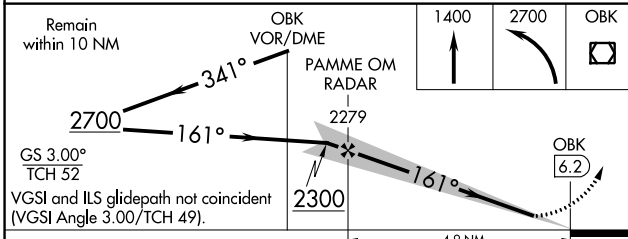
⚠ When local altimeter setting not received, use Chicago-O'Hare Intl altimeter setting: increase DA to 949 feet and all visibilities ¼ SM; increase all MDAs 40 feet and visibility S-LOC 16 Cats C and D ¼ SM. Rwy 16 helicopter visibility reduction below ¼ SM NA. Circling Rwy 6, 12, 24, 30, 34 NA at night. Autopilot coupled approach NA below 1125.

MISSED APPROACH: Climb to 1400 then climbing left turn to 2700 direct OBK VOR/DME and hold.

ATIS 124.2	CHICAGO APP CON 120.55 306.925	EXECUTIVE TOWER ★ 119.9 (CTAF) 0	GND CON 121.7	CLNC DEL 124.7 (when tower closed)	UNICOM 122.95
----------------------	--	--	-------------------------	---	-------------------------



LOCALIZER 109.75	I-PWK
------------------	-------



ELEV 647	TDZE 643
161° 4.9 NM from FAF	
704±	737
773	728±
684	357
34	441.5 X 75
663	666
500 X 120	501 X 130
TWR 773	
REIL Rwy 12 and 30	
REIL Rws 16 and 34	
RLS Rwy 16	
FAF to MAP 4.9 NM	
Knots	60 90 120 150 180
Min:Sec	4:54 3:16 2:27 1:58 1:38

CATEGORY	A	B	C	D
S-ILS 16	927-1 284 (300-1)			
S-LOC 16	1140-1 497 (500-1)	1140-1½ 497 (500-1½)	1140-1½ 497 (500-1½)	
CIRCLING	1140-1 493 (500-1)	1160-1½ 513 (600-1½)	1200-2 553 (600-2)	

EC-3, 25 FEB 2021 to 25 MAR 2021

EC-3, 25 FEB 2021 to 25 MAR 2021