

WAAS CH 45627 W16A	APP CRS 161°	Rwy Idg TDZE Apt Elev	5001 643 647
--	------------------------	-----------------------------	---

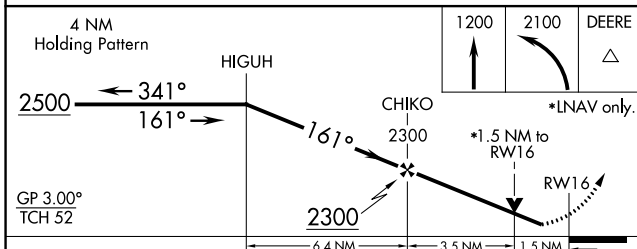
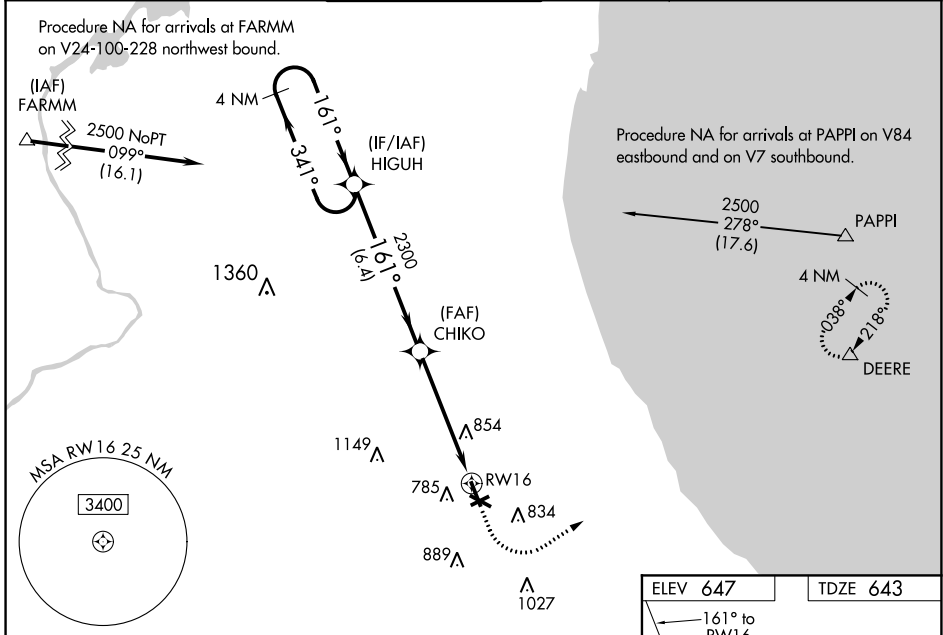
RNAV (GPS) RWY 16

CHICAGO EXECUTIVE (PWK)

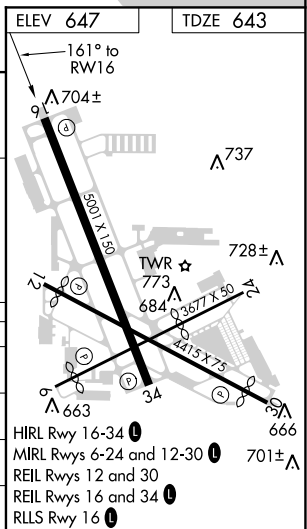
⚠ Circling to Rwy 6, 12, 24, 30, 34 NA at night. For uncompensated Baro-VNAV systems, LNAV/VNAV NA below -16°C (4°F) or above 39°C (102°F). Rwy 16 helicopter visibility reduction below 3/4 SM NA. DME/DME RNP-0.3 NA. When local altimeter setting not received, use Chicago O'Hare Intl altimeter setting and increase all DA 22 feet and all MDA 40 feet and increase LNAV Cats C and D visibility 1/4 mile, and Circling Cat C visibility 1/8 mile. VDP and Baro-VNAV NA with Chicago O'Hare Intl altimeter setting.

MISSED APPROACH:
Climb to 1200 then climbing left turn to 2100 direct DEERE and hold.

ATIS 124.2	CHICAGO APP CON 120.55 306.925	EXECUTIVE TOWER * 119.9 (CTAF) 0	GND CON 121.7	CLNC DEL 124.7 (when tower closed)	UNICOM 122.95
----------------------	--	--	-------------------------	---	-------------------------



CATEGORY	A	B	C	D
LPV DA	905-1 262 (300-1)			
LNAV/VNAV DA	1088-1½ 445 (500-1½)			
LNAV MDA	1160-1 517 (600-1)	1160-1⅓ 517 (600-1⅓)		
CIRCLING	1160-1 513 (600-1)	1160-1½ 513 (600-1½)	1200-2 553 (600-2)	



EC-3, 25 FEB 2021 to 25 MAR 2021

EC-3, 25 FEB 2021 to 25 MAR 2021