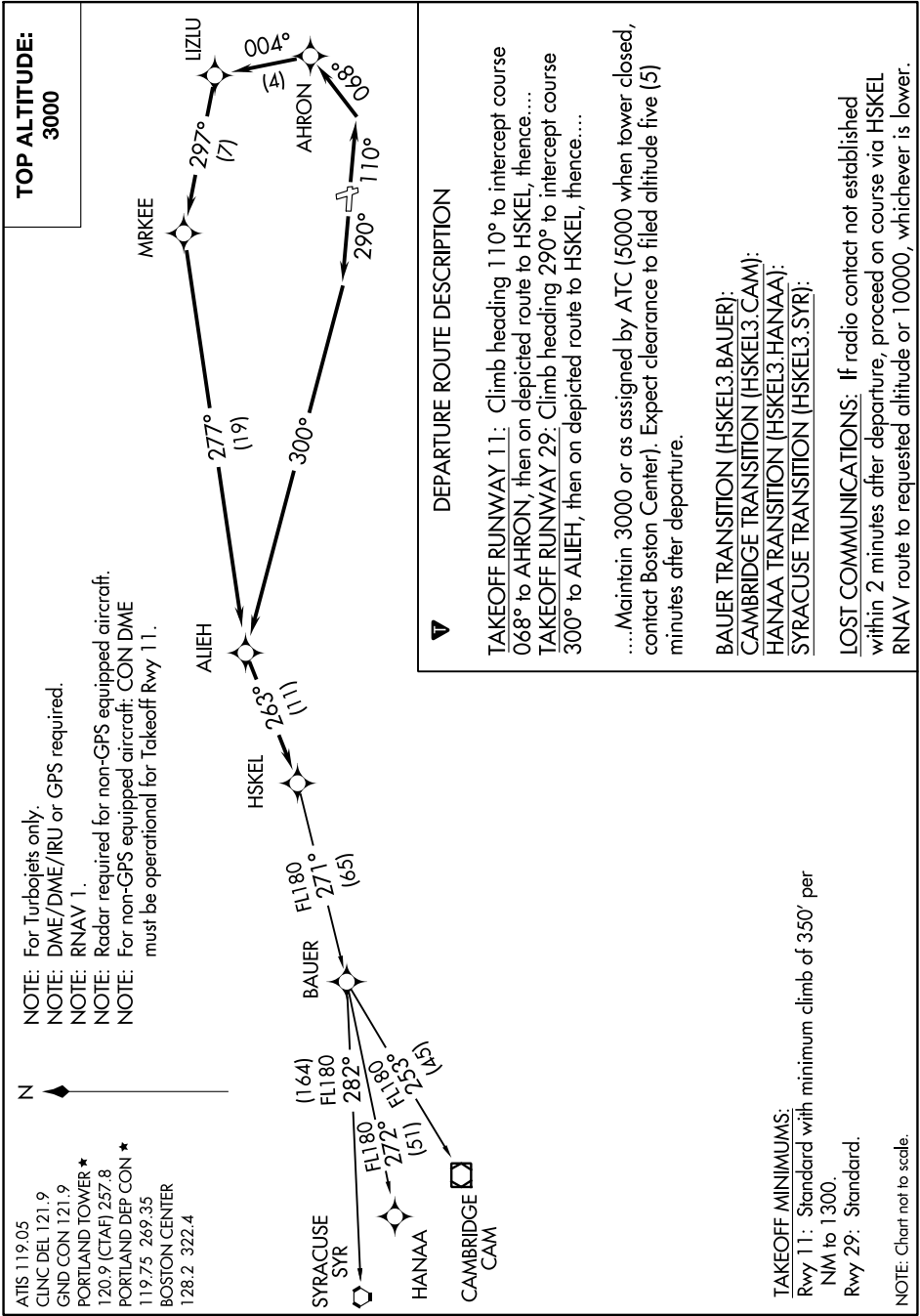


# HSKEL THREE DEPARTURE (RNAV)

NE-1, 25 FEB 2021 to 25 MAR 2021



NOTE: For Turbojets only.  
 NOTE: DME/DME/IRU or GPS required.  
 NOTE: RNAV 1.  
 NOTE: Radar required for non-GPS equipped aircraft.  
 NOTE: For non-GPS equipped aircraft: CON DME must be operational for Takeoff Rwy 11.

ATIS 119.05  
 CLNC DEL 121.9  
 GND CON 121.9  
 PORTLAND TOWER \*  
 120.9 (CTAF) 257.8  
 PORTLAND DEP CON \*  
 119.75 269.35  
 BOSTON CENTER  
 128.2 322.4

## DEPARTURE ROUTE DESCRIPTION

**TAKEOFF RUNWAY 11:** Climb heading 110° to intercept course 068° to AHRON, then on depicted route to HSKEL, thence....  
**TAKEOFF RUNWAY 29:** Climb heading 290° to intercept course 300° to ALIEH, then on depicted route to HSKEL, thence....

....Maintain 3000 or as assigned by ATC (5000 when tower closed, contact Boston Center). Expect clearance to filed altitude five (5) minutes after departure.

**BAUER TRANSITION (HSKEL3.BAUER):**  
**CAMBRIDGE TRANSITION (HSKEL3.CAM):**  
**HANAA TRANSITION (HSKEL3.HANAA):**  
**SYRACUSE TRANSITION (HSKEL3.SYR):**

**LOST COMMUNICATIONS:** If radio contact not established within 2 minutes after departure, proceed on course via HSKEL RNAV route to requested altitude or 10000, whichever is lower.

**TAKEOFF MINIMUMS:**  
 Rwy 11: Standard with minimum climb of 350' per NM to 1300.  
 Rwy 29: Standard.  
 NOTE: Chart not to scale.

NE-1, 25 FEB 2021 to 25 MAR 2021