

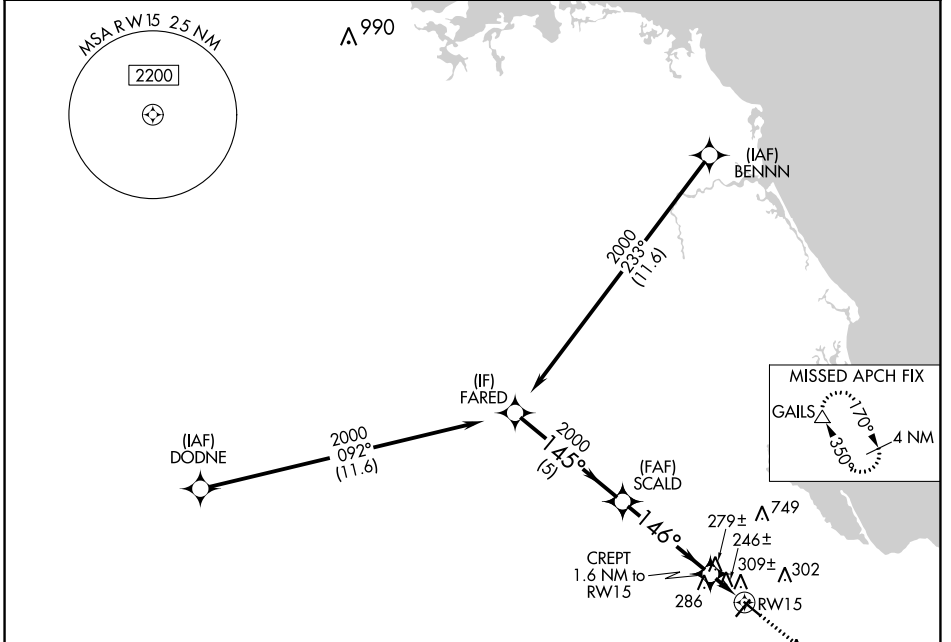
WAAS CH 93639 W15A	APP CRS 146°	Rwy Idg TDZE 147 Apt Elev 148	4350
--	------------------------	---	-------------

RNAV (GPS) RWY 15

PLYMOUTH MUNI (PYM)

RNP APCH.	Rwy 15 helicopter visibility reduction below 1 SM NA. Straight-in Rwy 15 NA at night, Circling Rwy 15 NA at night.	MISSED APPROACH: Climb to 600 then climbing left turn to 2000 direct GAILS and hold.
-----------	---	--

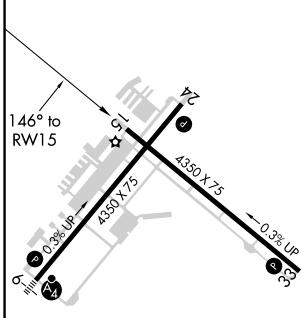
ASOS 135.625	BOSTON APP CON * 118.2 284.6	CLNC DEL 127.75	UNICOM 122.725 (CTAF)	122.9
------------------------	--	---------------------------	---------------------------------	--------------



NE-1, 25 FEB 2021 to 25 MAR 2021

NE-1, 25 FEB 2021 to 25 MAR 2021

ELEV 148	TDZE 147
-----------------	-----------------



REIL Rwy 24	MIRL Rwy 6-24 and 15-33
-------------	-------------------------

		Visual Segment - Obstacles.		
		600	2000	GAILS
		↑	↶	△
	FARED			
	SCALD			
	CREPT 1.6 NM to RW15			
	RW15			
		5 NM	4.1 NM	1.6 NM
CATEGORY		A	B	C
LP MDA		500-1 353 (400-1)		
LNAV MDA		560-1	413 (500-1)	560-1 ¹ / ₈ 413 (500-1 ¹ / ₈)
<input checked="" type="checkbox"/> CIRCLING		620-1 472 (500-1)	640-1 492 (500-1)	740-1 ¹ / ₂ 592 (600-1 ¹ / ₂)