

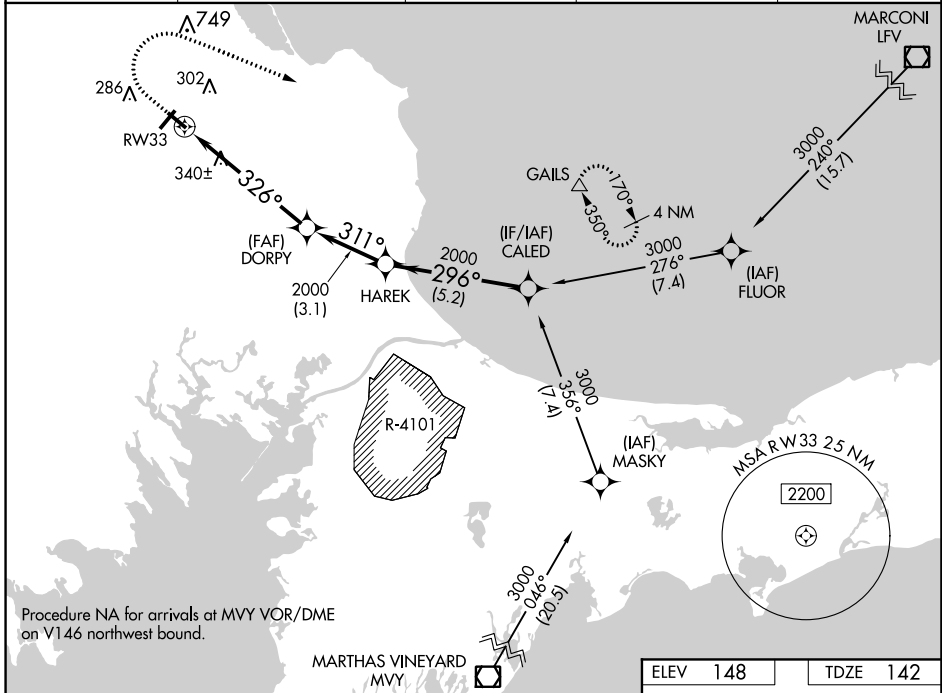
WAAS CH 63241 W33A	APP CRS 326°	Rwy Idg TDZE 142 Apt Elev 148	4350
--	------------------------	---	-------------

RNAV (GPS) RWY 33

PLYMOUTH MUNI (PYM)

RNP APCH.	<p>⚠ Circling Rwy 15 NA at night. Rwy 33 helicopter visibility reduction below ¾ SM NA. ⚠ For uncompensated Baro-VNAV systems, LNAV/VNAV NA below -18°C or above 54°C.</p>	<p>MISSED APPROACH: Climb to 700 then climbing right turn to 3000 direct GAILS and hold.</p>
-----------	---	--

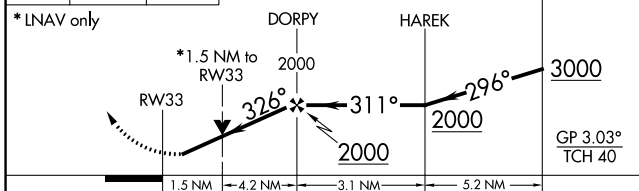
ASOS 135.625	BOSTON APP CON * 118.2 284.6	CLINC DEL 127.75	UNICOM 122.725 (CTAF)	122.9
------------------------	--	----------------------------	---------------------------------	--------------



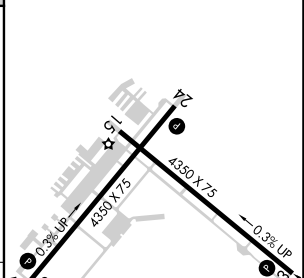
NE-1, 25 FEB 2021 to 25 MAR 2021

NE-1, 25 FEB 2021 to 25 MAR 2021

700	3000	GAILS
↑	↷	△



ELEV 148	TDZE 142
----------	----------



CATEGORY	A	B	C	D
LPV DA	393-¾	251 (300-¾)		NA
LNAV/VNAV DA	486-1	344 (400-1)		NA
LNAV MDA	660-1	518 (600-1)	660-1¾ 518 (600-1¾)	NA
C CIRCLING	660-1	512 (600-1)	760-1¾ 612 (700-1¾)	NA

REIL Rwy 24 **Ⓛ**
MIRL Rwy 6-24 and 15-33 **Ⓛ**