


WAAS CH <b>93717</b> <b>W32A</b>	APP CRS <b>324°</b>	Rwy Idg TDZE Apt Elev	<b>8701</b> <b>3160</b> <b>3204</b>
--	------------------------	-----------------------------	---

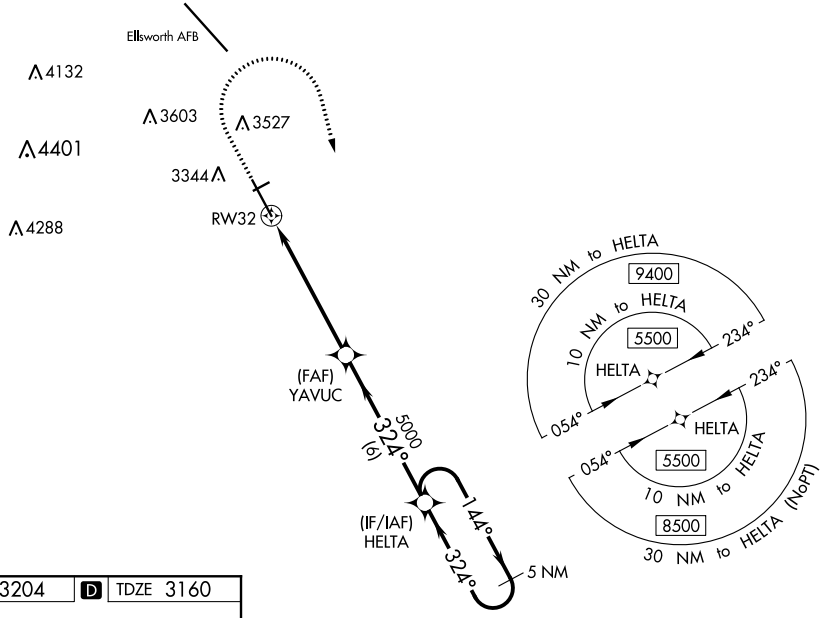
# RNAV (GPS) RWY 32

RAPID CITY RGNL (RAP)

**⚠** For uncompensated Baro-VNAV systems, LNAV/VNAV NA below -24°C (-11°F) or above 51°C (125°F). DME/DME RNP-0.3 NA. For inop ALS, increase LPV Cat E visibility to RVR 4000, LNAV/VNAV all Cats to RVR 4500 and LNAV Cat E to 1½ SM. # RVR 1800 authorized with use of FD or AP or HUD to DA.

**MALSR**  
 MISSED APPROACH: Climb to 3700 then climbing right turn to 5500 direct HELTA and hold.

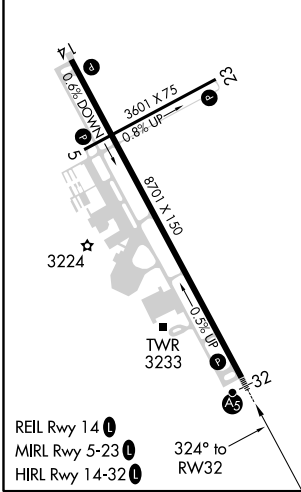
ASOS <b>118.525</b>	ELLSWORTH APP CON * <b>119.5 259.1</b>	RAPID CITY TOWER * <b>125.85 (CTAF) 0 257.8</b>	GND CON <b>121.9</b>	UNICOM <b>122.95</b>
------------------------	---	--	-------------------------	-------------------------

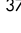
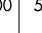
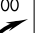
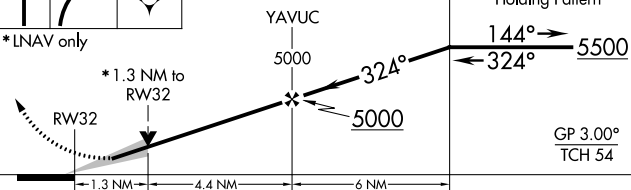


NC-1, 25 FEB 2021 to 25 MAR 2021

NC-1, 25 FEB 2021 to 25 MAR 2021

ELEV 3204	<b>D</b>	TDZE 3160
-----------	----------	-----------



3700	5500	HELTA			
					
* LNAV only					
					
CATEGORY	A	B	C	D	E
LPV DA#	3360/24		200 (200-½)		
LNAV/VNAV DA	3410/24		250 (300-½)		
LNAV MDA	3620/24		3620/45		460 (500-¾)
<b>C</b> CIRCLING	3660-1 456 (500-1)	3840-1 636 (700-1)	3860-1¾ 656 (700-1¾)	3940-2¼ 736 (800-2¼)	3960-2¾ 756 (800-2¾)