

| | | |
|--|------------------------|---|
| WAAS CH 99500 W12A | APP CRS 120° | Rwy Idg 3482 TDZE 5 Apt Elev 5 |
|--|------------------------|---|

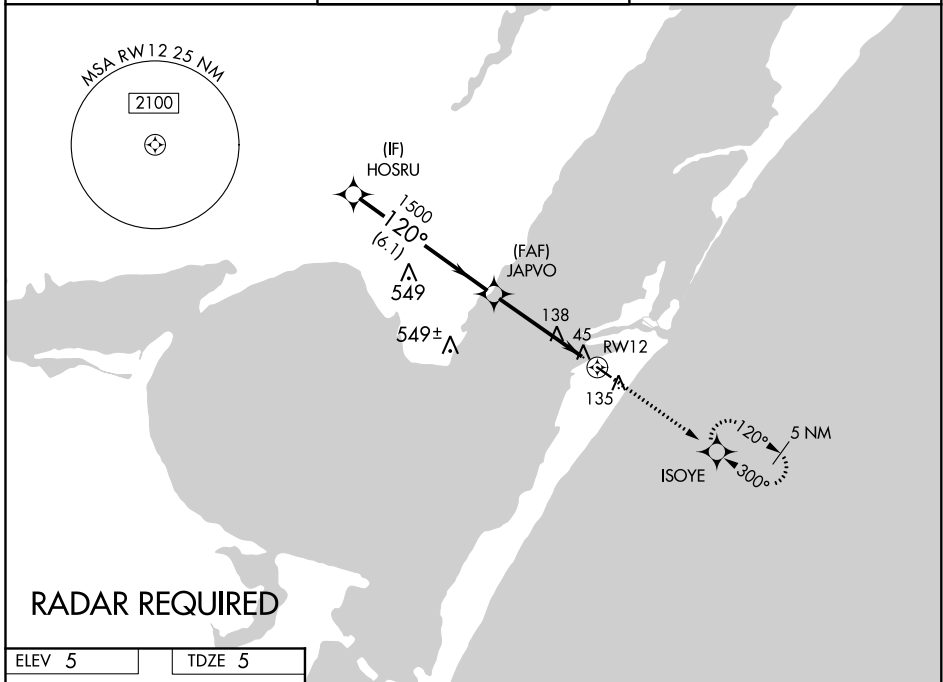
RNAV (GPS) RWY 12

MUSTANG BEACH (R.A.S)

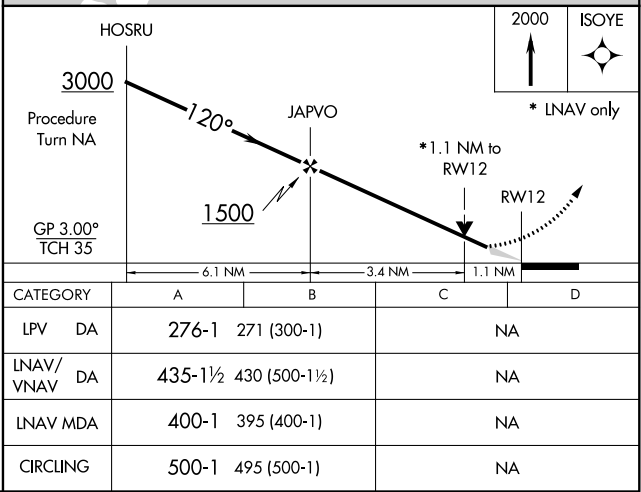
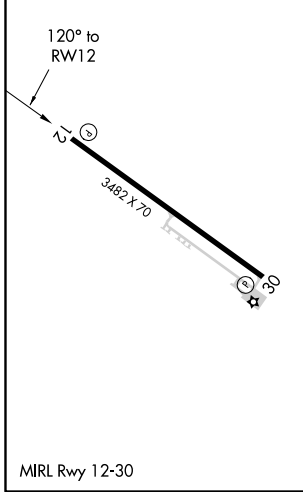
⚠ DME/DME RNP-0.3 NA. For uncompensated Baro-VNAV systems, LNAV/VNAV NA below -15°C (5°F) or above 44°C (111°F). If local altimeter setting not received, use Corpus Christi Intl altimeter setting and increase all DAs/MDAs 60 feet. Baro-VNAV and VDP NA when using Corpus Christi Intl altimeter setting.

MISSED APPROACH: Climb to 2000 direct ISOYE and hold.

| | | |
|--------------------------|--|----------------------|
| AWOS-3 118.425 | CORPUS CHRISTI APP CON 125.4 307.9 | CTAF 122.9 |
|--------------------------|--|----------------------|



| | |
|--------|--------|
| ELEV 5 | TDZE 5 |
|--------|--------|



SC-3, 25 FEB 2021 to 25 MAR 2021

SC-3, 25 FEB 2021 to 25 MAR 2021