

DALLAS, TEXAS

AL-742 (FAA)

20338

WAAS CH 42699 W31A	APP CRS 309°	Rwy Idg TDZE Apt Elev	6601 660 661
--	------------------------	-----------------------------	---

RNAV (GPS) RWY 31

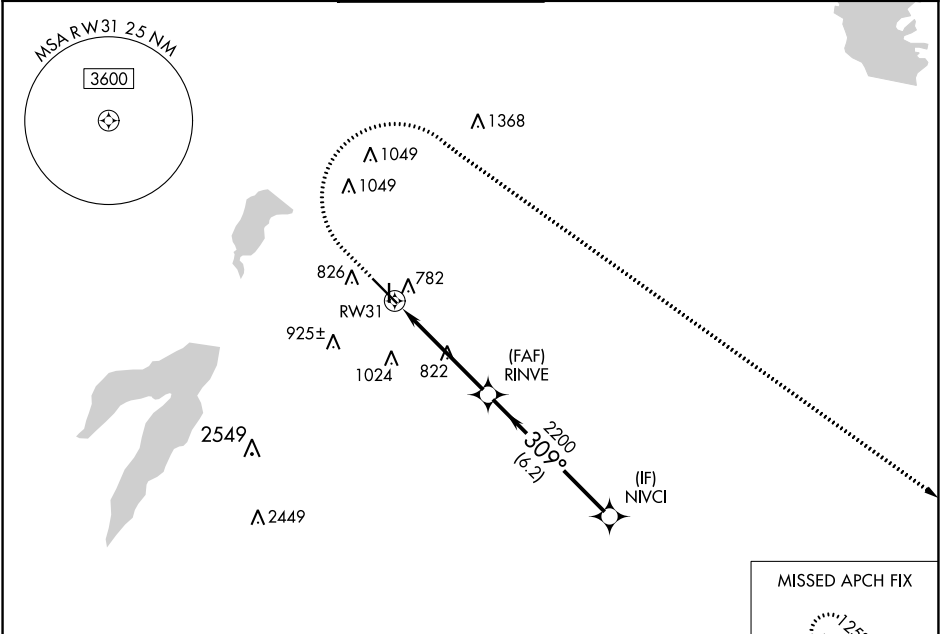
DALLAS EXECUTIVE (R.B.D)

RNP APCH.

▼ For uncompensated Baro-VNAV systems, LNAV/VNAV NA below -2°C or above 54°C.

▲ MISSED APPROACH: Climb to 1200 then climbing right turn to 2500 direct FLIPP and hold.

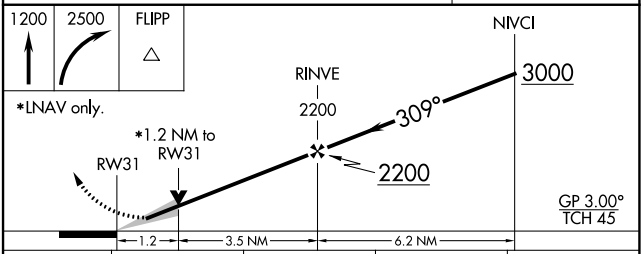
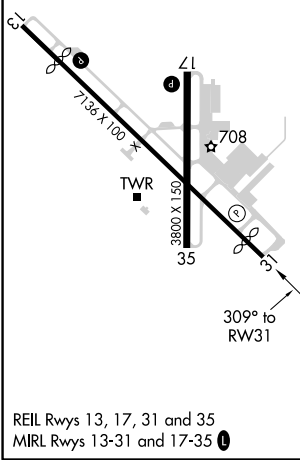
ATIS 126.35	REGIONAL APP CON 125.2 343.65	EXECUTIVE TOWER * 127.25 (CTAF) 0	GND CON 119.475	CLNC DEL 118.625	UNICOM 122.95
-----------------------	---	---	---------------------------	----------------------------	-------------------------



SC-2, 25 FEB 2021 to 25 MAR 2021

SC-2, 25 FEB 2021 to 25 MAR 2021

ELEV 661	D	TDZE 660
----------	----------	----------



1200	2500	FLIPP	NIVCI
▲	↻	△	
*LNAV only.			
*1.2 NM to RW31			
RW31			
1.2		3.5 NM	
		6.2 NM	
		RINVE 2200	
		309°	
		2200	
		3000	
		GP 3.00° TCH 45	
CATEGORY	A	B	C
LPV DA	860-3/4		200 (200-3/4)
LNAV/VNAV DA	993-1		333 (400-1)
LNAV MDA	1080-1		420 (500-1)
	1080-1 1/8		420 (500-1 1/8)
C CIRCLING	1160-1	1220-1	1340-2
	499 (500-1)	559 (600-1)	679 (700-2)
	1400-2 1/4		739 (800-2 1/4)

DALLAS, TEXAS
Amdt 1B 03DEC20

32°41'N-96°52'W

DALLAS EXECUTIVE (R.B.D)

RNAV (GPS) RWY 31