

WAAS CH 65903 W01A	APP CRS 007°	Rwy Idg 4206 TDZE 797 Apt Elev 798
--	------------------------	---

RNAV (GPS) RWY 1

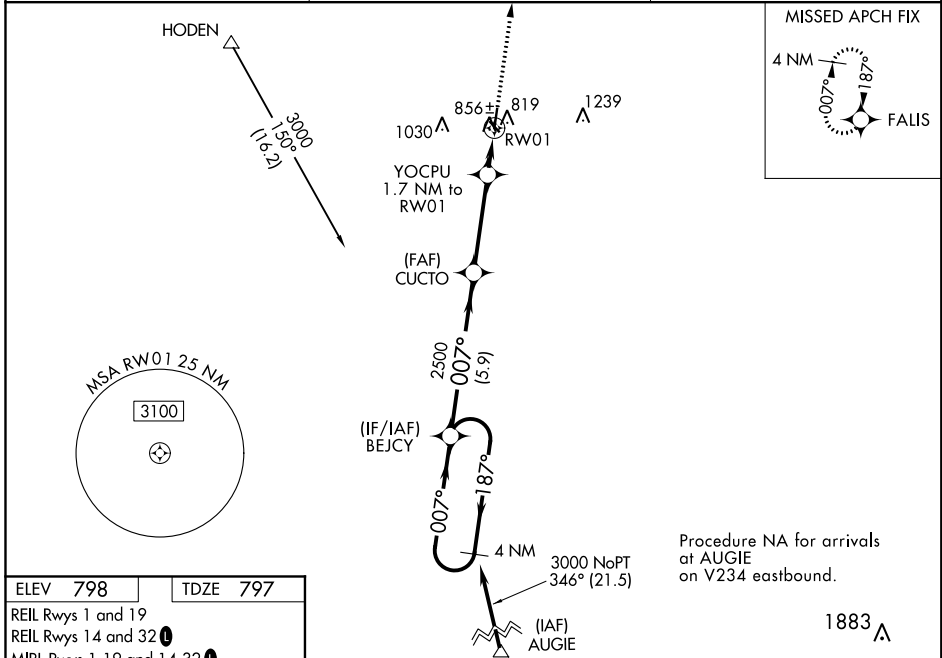
SKYHAVEN (RCM)

⚠ Baro-VNAV NA when using Whiteman AFB altimeter setting. For uncompensated Baro-VNAV systems, LNAV/VNAV NA below -16°C (4°F) or above 54°C (130°F). DME/DME RNP-0.3 NA.

⚠ Helicopter visibility reduction below ¾ SM NA. When local altimeter setting not received, use Whiteman AFB altimeter setting and increase all DA 39 feet and all MDA 40 feet; increase LNAV/VNAV all Cats and LNAV Cat C visibility ½ mile, and increase Cat C Circling visibility ¼ mile.

MISSED APPROACH:
Climb to 3000 direct
FALIS and hold.

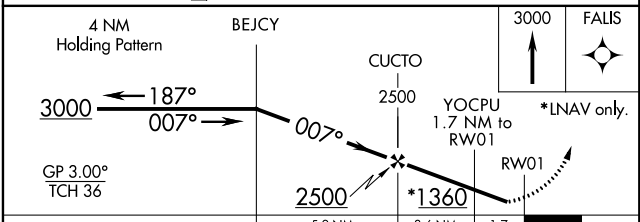
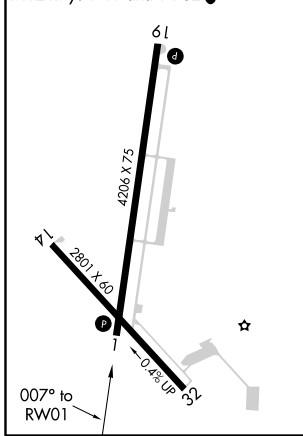
AWOS-3 119.575	WHITEMAN APP CON * 127.45 284.0	UNICOM 123.0 (CTAF) 0
--------------------------	---	--



NC-3, 25 FEB 2021 to 25 MAR 2021

NC-3, 25 FEB 2021 to 25 MAR 2021

ELEV 798	TDZE 797
REIL Rwy 1 and 19	REIL Rwy 14 and 32 0
MIRL Rwy 1-19 and 14-32 0	



CATEGORY	A	B	C	D
LPV DA	1047-1	250 (300-1)		NA
LNAV/ VNAV DA	1158-1¼	361 (400-1¼)		NA
LNAV MDA	1220-1	423 (500-1)	1220-1¼ 423 (500-1¼)	NA
C CIRCLING	1260-1 462 (500-1)	1340-1 542 (600-1)	1380-1½ 582 (600-1½)	NA