

WAAS CH <b>45803</b> <b>W19A</b>	APP CRS <b>187°</b>	Rwy Idg <b>4206</b> TDZE <b>797</b> Apt Elev <b>798</b>
--	------------------------	---

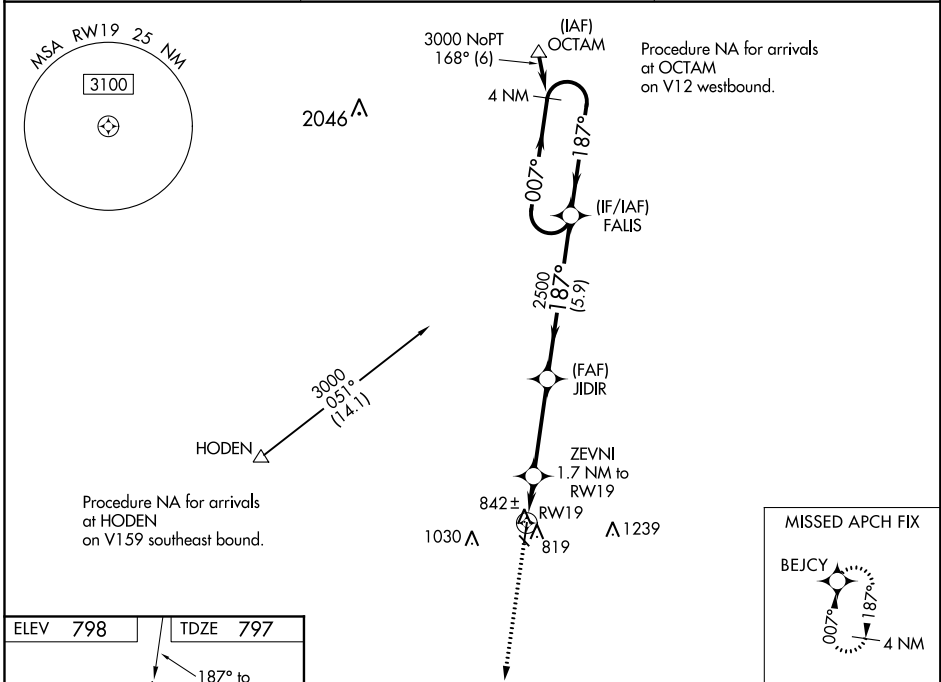
# RNAV (GPS) RWY 19

SKYHAVEN (RCM)

**⚠** Baro-VNAV NA when using Whiteman AFB altimeter setting. For uncompensated Baro-VNAV systems, LNAV/VNAV NA below -16°C (4°F) or above 54°C (130°F). DME/DME RNP-0.3 NA. When local altimeter setting not received, use Whiteman AFB altimeter setting and increase all DA 39 feet and all MDA 40 feet; increase LNAV/VNAV all Cats visibility 1/8 mile, and increase Cat C Circling visibility 1/4 mile.

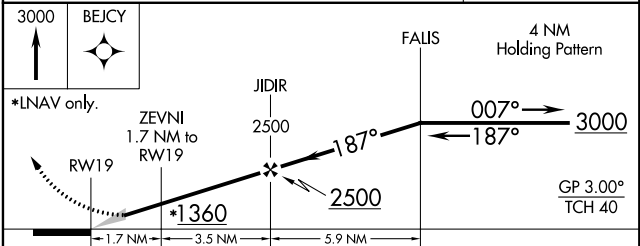
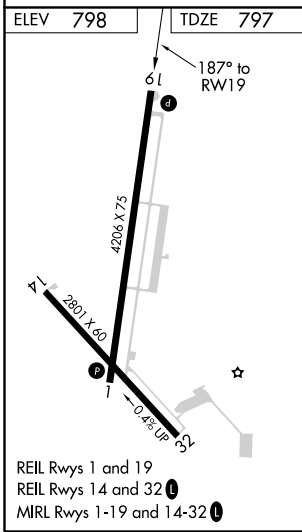
**MISSED APPROACH:**  
Climb to 3000 direct BEJCY and hold.

AWOS-3 <b>119.575</b>	WHITEMAN APP CON ★ <b>127.45 284.0</b>	UNICOM <b>123.0 (CTAF) ①</b>
--------------------------	---	---------------------------------



NC-3, 25 FEB 2021 to 25 MAR 2021

NC-3, 25 FEB 2021 to 25 MAR 2021



CATEGORY	A	B	C	D
LPV DA	1047-1		250 (300-1)	NA
LNAV/VNAV DA	1102-1		305 (400-1)	NA
LNAV MDA	1240-1	443 (500-1)	1240-1 <sup>3</sup> / <sub>8</sub> 443 (500-1 <sup>3</sup> / <sub>8</sub> )	NA
<b>C</b> CIRCLING	1260-1 462 (500-1)	1340-1 542 (600-1)	1380-1 <sup>1</sup> / <sub>2</sub> 582 (600-1 <sup>1</sup> / <sub>2</sub> )	NA