

WAAS CH <b>77921</b> <b>W14A</b>	APP CRS <b>140°</b>	Rwy Idg TDZE Apt Elev	<b>4001</b> <b>1237</b> <b>1240</b>
--	------------------------	-----------------------------	---

# RNAV (GPS) RWY 14

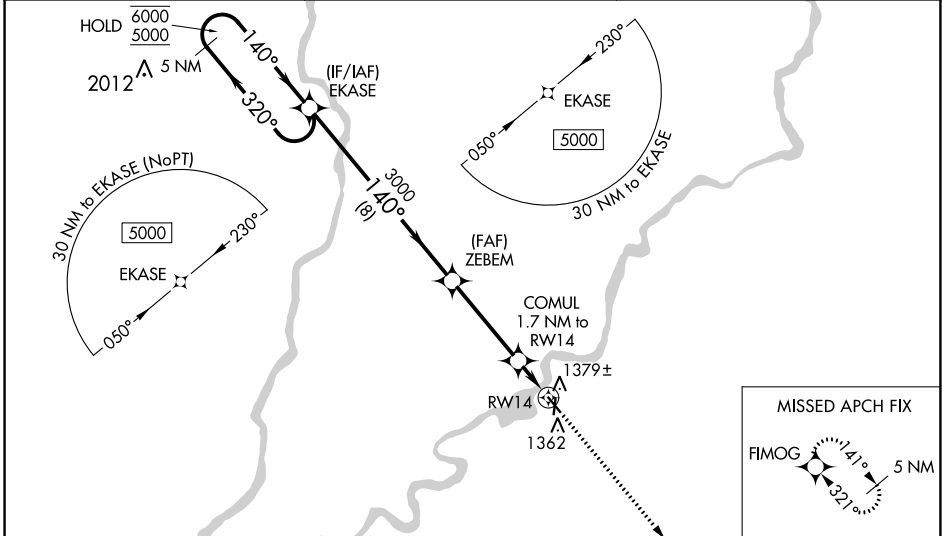
RUSK COUNTY (RCX)

RNP APCH.

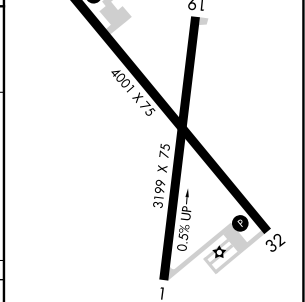
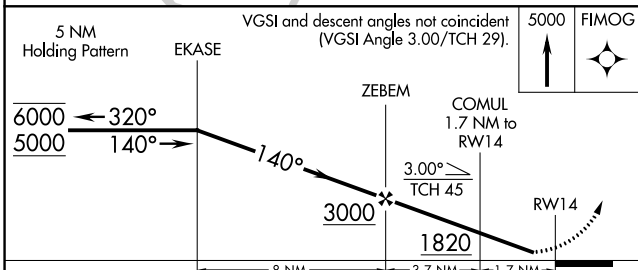
**⚠** Rwy 14 helicopter visibility reduction below 1 SM NA. Straight-in Rwy 14 NA at night, Circling Rwy 1, 14, 19 NA at night. When local altimeter setting not received, use Rice Lake altimeter setting and increase all MDAs 100 feet.

MISSED APPROACH: Climb to 5000 direct FIMOG and hold, continue climb-in-hold to 5000.

AWOS-3 <b>118.125</b>	MINNEAPOLIS CENTER <b>133.65 281.5</b>	UNICOM <b>122.8 (CTAF) 0</b>
--------------------------	---	---------------------------------



ELEV 1240	TDZE 1237
-----------	-----------



CATEGORY	A	B	C	D
LNNAV MDA	1640-1	403 (400-1)	NA	NA
CIRCLING	1680-1 440 (500-1)	1700-1 460 (500-1)	NA	NA

REIL Rwy 14 and 32 0

MIRL Rwy 14-32 and 1-19 0

EC-3, 25 FEB 2021 to 25 MAR 2021

EC-3, 25 FEB 2021 to 25 MAR 2021