

APP CRS 170°	Rwy Idg 2901
	TDZE 1045
	Apt Elev 1045

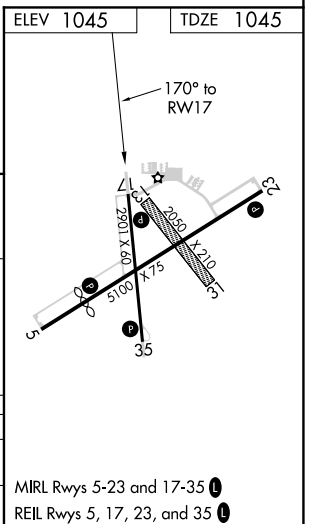
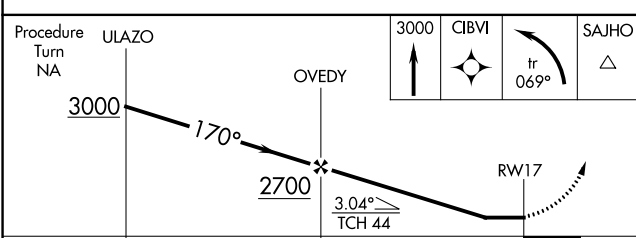
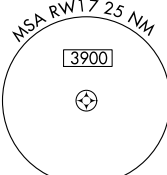
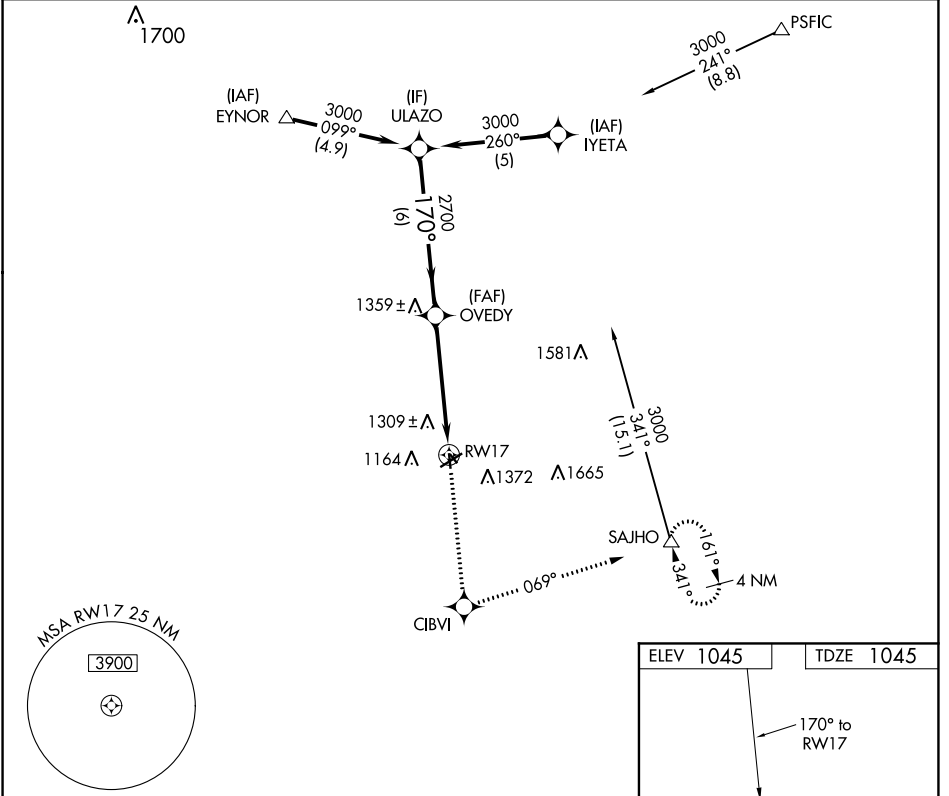
RNAV (GPS) RWY 17

RED OAK MUNI (RDK)

⚠ DME/DME RNP-0.3 NA. Visibility reduction by helicopters NA. When local altimeter setting not received, use Shenandoah altimeter setting and increase all MDA 60 feet, and increase Circling Cat B visibility 1/4 mile.

⚠ MISSED APPROACH: Climb to 3000 direct CIBVI and left turn via track 069° to SAJHO and hold.

AWOS-3P 123.925	OMAHA APP CON 124.5 263.0	UNICOM 122.8 (CTAF) 0
---------------------------	-------------------------------------	---------------------------------



CATEGORY	A	B	C	D
INAV MDA	1600-1	555 (600-1)		NA
CIRCLING	1620-1 575 (600-1)	1780-1 735 (800-1)		NA

NC-3, 25 FEB 2021 to 25 MAR 2021

NC-3, 25 FEB 2021 to 25 MAR 2021