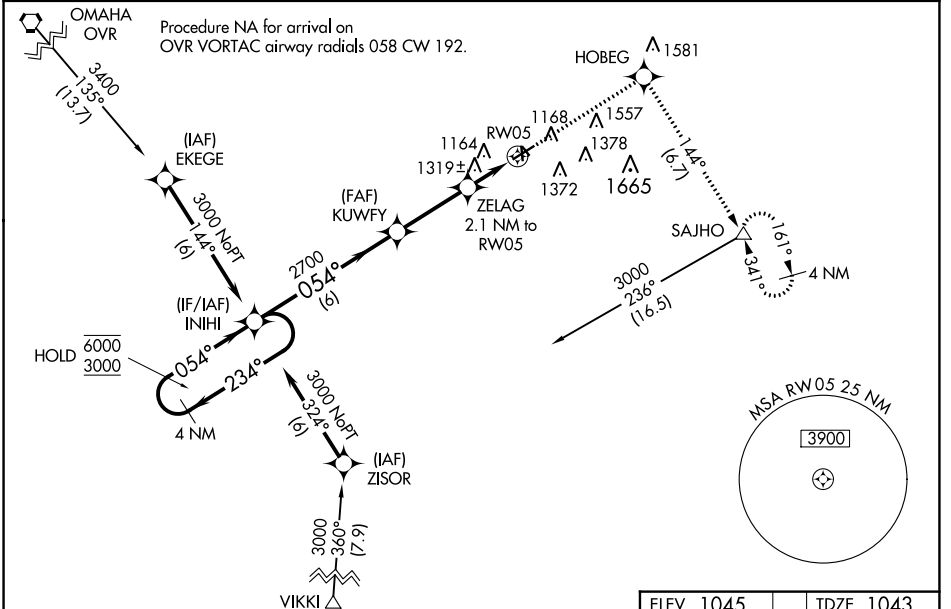


| | | |
|--|------------------------|---|
| WAAS CH 42927 W05A | APP CRS 054° | Rwy ldg TDZE 1043 Apt Elev 1045 |
|--|------------------------|---|

RNAV (GPS) RWY 5

RED OAK MUNI (RDK)

| | | |
|---|-------------------------------------|---|
| RNP APCH <p>Circling NA to Rwys 13 and 31. For uncompensated Baro-VNAV systems, LNAV/VNAV NA below -17° C or above 54° C.</p> | | MISSED APPROACH: Climb to 3000 direct HOBEG and right turn on track 144° to SAJHO and hold. |
| AWOS-3P 123.925 | OMAHA APP CON 124.5 263.0 | UNICOM 122.8 (CTAF) 0 |



NC-3, 25 FEB 2021 to 25 MAR 2021

NC-3, 25 FEB 2021 to 25 MAR 2021

| | | | |
|---|-----------------------|-----------------------|----------------------|
| VGSi and RNAV glidepath not coincident (VGSi Angle 3.00/TCH 26). 4 NM Holding Pattern 6000 ← 234° 3000 — 054° → GP 3.00° TCH 40 | | 3000 HOBEG | SAJHO tr 144° |
| INIHI KUFY 2700 ZELAG 2.1 NM to RW05 RW05 *1740 *LNAV only | | | |
| CATEGORY | A | B | C |
| LPV DA | 1363-1 | 320 (400-1) | NA |
| LNAV/VNAV DA | 1660-2¼ | 617 (700-2¼) | NA |
| LNAV MDA | 1600-1 | 557 (600-1) | NA |
| CIRCLING | 1620-1 575 (600-1) | 1740-1 695 (700-1) | NA |

| | |
|---|-----------|
| ELEV 1045 | TDZE 1043 |
| MIRL Rwy 5-23 and 17-35 0 REIL Rwy 5, 17, 23, and 35 0 | |