

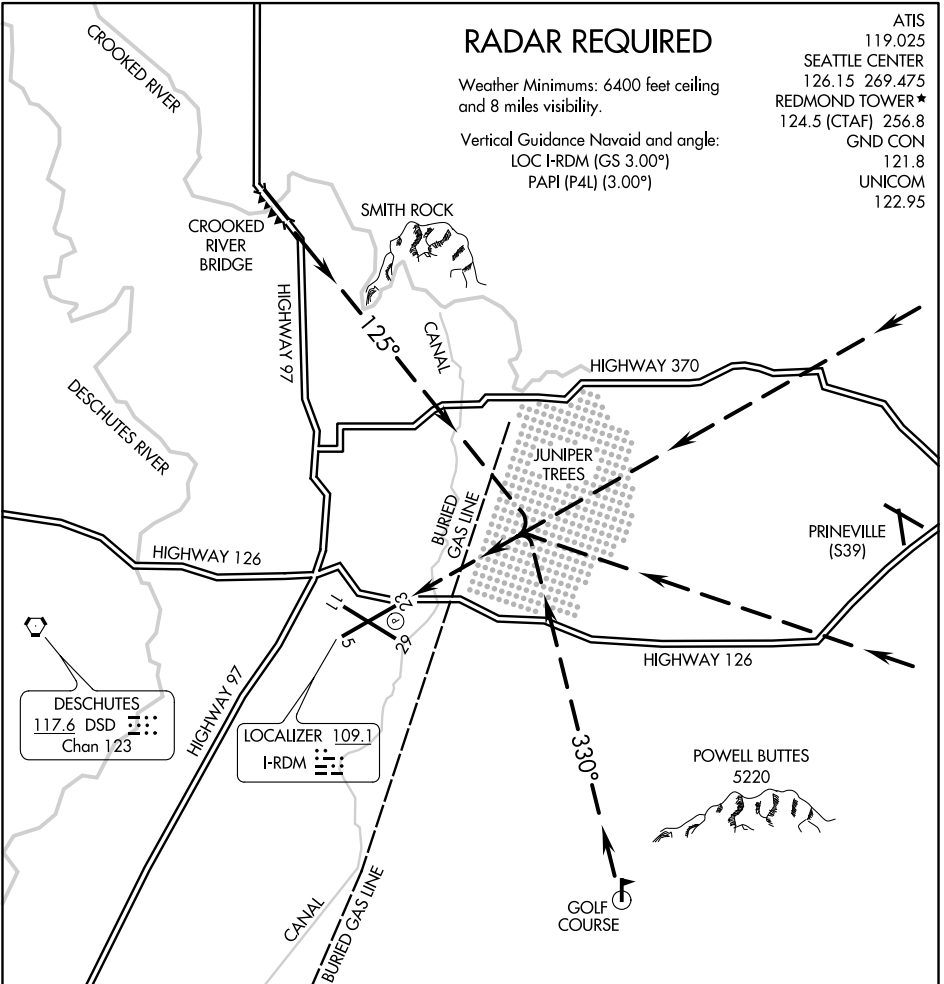
JUNIPER VISUAL RWY 23

RADAR REQUIRED

Weather Minimums: 6400 feet ceiling and 8 miles visibility.

Vertical Guidance Navaid and angle:
LOC I-RDM (GS 3.00°)
PAPI (P4L) (3.00°)

- ATIS 119.025
- SEATTLE CENTER 126.15 269.475
- REDMOND TOWER * 124.5 (CTAF) 256.8
- GND CON 121.8
- UNICOM 122.95



NW-1, 25 FEB 2021 to 25 MAR 2021

NW-1, 25 FEB 2021 to 25 MAR 2021

DESCHUTES
117.6 DSD
Chan 123

LOCALIZER 109.1
I-RDM

1 NM	2	3	4	5	6	7	8	9	10	11	12	13	14	15	16	17	18
------	---	---	---	---	---	---	---	---	----	----	----	----	----	----	----	----	----

JUNIPER VISUAL APPROACH RWY 23
PROCEDURE NOT AUTHORIZED AT NIGHT

JUNIPER VISUAL RWY 23