

GRAND FORKS, NORTH DAKOTA

# TACAN RWY 17

TACAN RDR Chan 111	APCH CRS 179°	Rwy ldg TDZE Arprt Elev	12,351 900 911
-----------------------	------------------	-------------------------------	----------------------

AL-5010 (USAF)

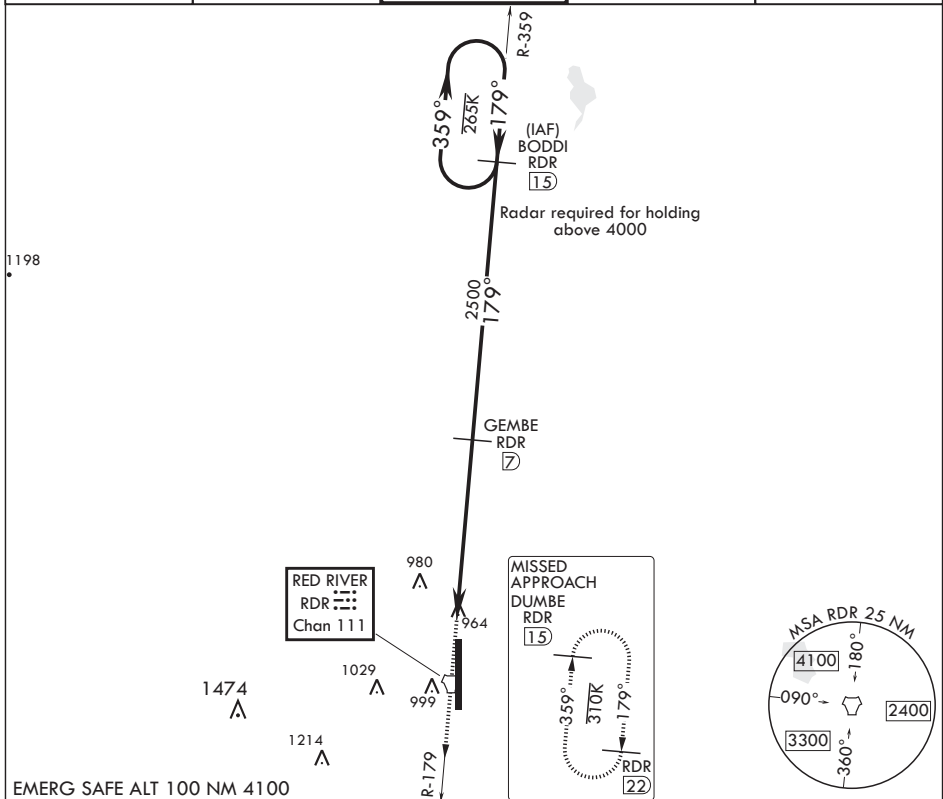
GRAND FORKS AFB (KRDR)

\* When ALS inop, increase CAT AB RVR to 55, vis to 1 mile; CAT CDE RVR to 50, vis to 1 mile.  
\*\* Circling E of Rwy 17-35 not authorized.

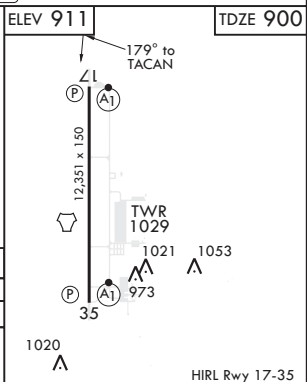
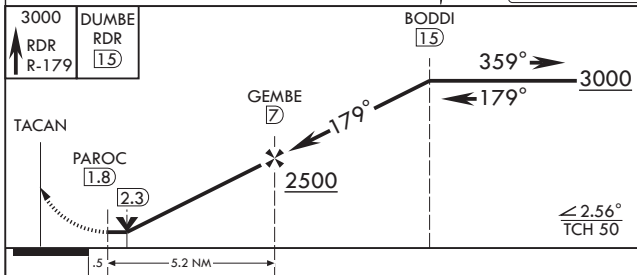
ALSF-1

MISSED APPROACH: Climb to 3000 on RDR TACAN R-179 to DUMBE and hold.

ATIS 273.45	APP CON 118.1 318.1	RED RIVER TOWER 124.9 349.0	GND CON 119.15 275.8	CLNC DEL 119.15 360.7
----------------	------------------------	--------------------------------	-------------------------	--------------------------



EMERG SAFE ALT 100 NM 4100



CATEGORY	A	B	C	D	E
S-17*	1240/24340 (400-1/2)		1240/40340		(400-3/4)
CIRCLING**	1340-1429 (500-1)	1380-1469 (500-1)	1380-1469 (500-1 1/2)	1480-2569 (600-2)	2040-31129 (1200-3)

GRAND FORKS, NORTH DAKOTA

47°58'N - 97°24'W

GRAND FORKS AFB (KRDR)

Amdt 3 26APR18

# TACAN RWY 17

NC-1, 25 FEB 2021 to 25 MAR 2021

NC-1, 25 FEB 2021 to 25 MAR 2021