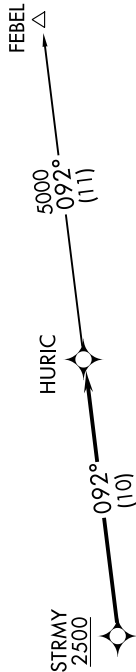


HURIC FOUR DEPARTURE (RNAV)

SE-2, 25 FEB 2021 to 25 MAR 2021

**TOP ALTITUDE:
(JETS) 6000
(PROPS) ASSIGNED BY ATC**

- D-ATIS 123.8
- CLNC DEL 120.1
- CPDLC
- GND CON 121.9 348.6 (EAST)
(Rwys 5R-23L, 14-32)
- 121.7 348.6 (WEST)
(Rwy 5L-23R)
- RALEIGH TOWER 127.45 257.8 (EAST)
(Rwys 5R-23L, 14-32)
- 119.3 257.8 (WEST)
(Rwy 5L-23R)
- RALEIGH DEP CON 125.3 353.675



TAKEOFF MINIMUMS

- Rwys 5L/R: Standard.
- Rwy 14: Standard with minimum climb of 310' per NM to 1000.
- Rwy 23L: Standard with minimum climb of 250' per NM to 2300.
- Rwy 23R: Standard with minimum climb of 240' per NM to 2100.
- Rwy 32: 300-1.

NOTE: Chart not to scale.

DEPARTURE ROUTE DESCRIPTION

TAKEOFF RUNWAYS 5L/R, 14, 23L/R, 32: Climb on assigned heading for RADAR vectors to cross STRMY at or above 2500, thence. . . .

. . . on track 092° to HURIC. Turbojets maintain 6000, propellers maintain altitude assigned by ATC. Expect clearance to filed altitude within ten minutes after departure.

FEBEL TRANSITION (HURIC4.FEBEL)

- NOTE: RNAV 1.
- NOTE: DME/DME/IRU or GPS required.
- NOTE: RADAR required.
- NOTE: If unable to accept climb rate, advise ATC on initial contact.

SE-2, 25 FEB 2021 to 25 MAR 2021