

LOC/DME I-RDU 109.5 Chan 32	APP CRS 054°	Rwy Idg 7500 TDZE 420 Apt Elev 435
------------------------------------------	------------------------	---------------------------------------------------------------

ILS or LOC RWY 5R

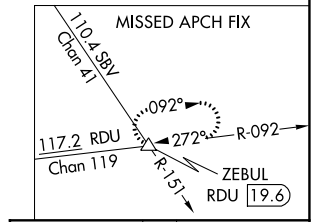
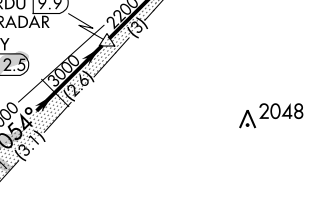
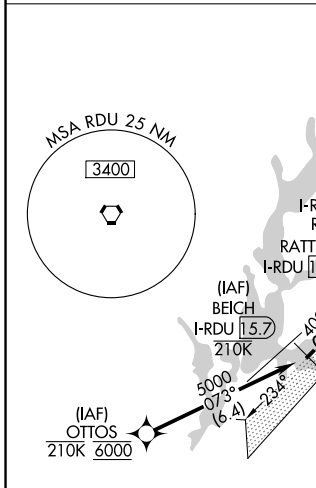
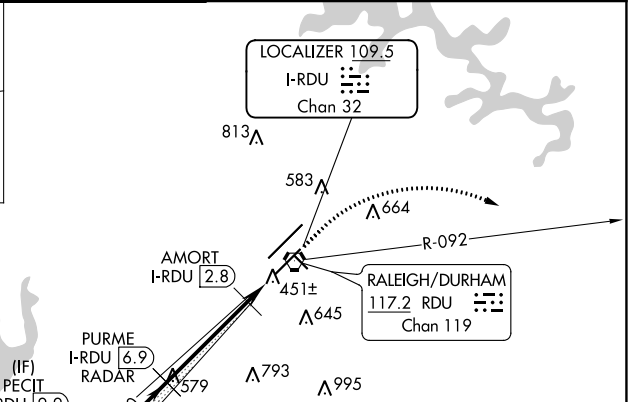
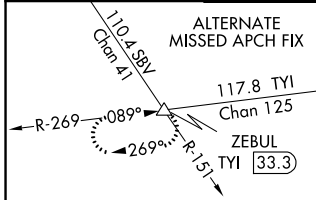
RALEIGH-DURHAM INTL (RDU)

RNAV 1-DME/DME/IRU or GPS or RADAR required for procedure entry. DME or RADAR required for LOC only.

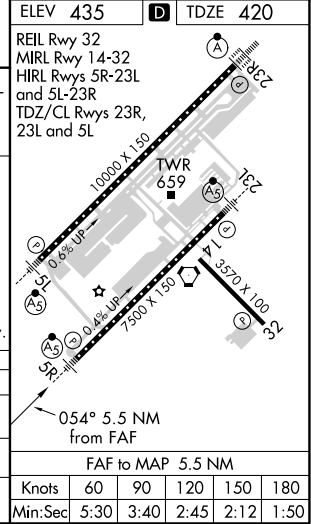
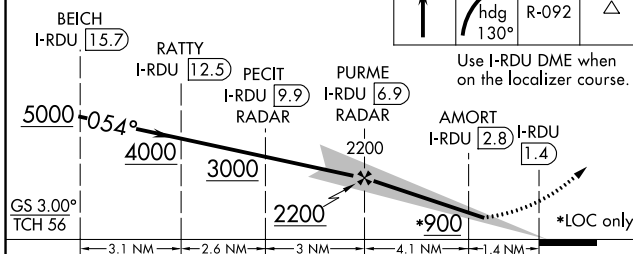
MALSR
MISSED APPROACH: Climb to 1000 then climbing right turn to 2600 on heading 130° and on RDU VORTAC R-092 to ZEBUL INT/ RDU 19.6 DME and hold.

Simultaneous approach authorized.
RVR 1800 authorized with use of FD or AP or HUD to DA.

D-ATIS 123.8	RALEIGH APP CON 127.675 307.9	(EAST) RALEIGH TOWER (WEST) 127.45 257.8 119.3 257.8 Rwys 5R-23L and 14-32 Rwy 5L-23R	(EAST) GND CON (WEST) 121.9 348.6 121.7 348.6 Rwys 5R-23L and 14-32 Rwy 5L-23R	CLNC DEL 120.1	CPDLC
------------------------	-----------------------------------------	-------------------------------------------------------------------------------------------------------------	------------------------------------------------------------------------------------------------------	--------------------------	-------



VGSI and ILS glidepath not coincident (VGSI Angle 3.00/TCH 62).



CATEGORY	A	B	C	D
S-ILS 5R #	620/24		200 (200-½)	
S-LOC 5R	760/24	340 (400-½)	760/26	340 (400-½)
CIRCLING	960-1	525 (600-1)	1020-1½ 585 (600-1½)	1180-2½ 745 (800-2½)

SE-2, 25 FEB 2021 to 25 MAR 2021

SE-2, 25 FEB 2021 to 25 MAR 2021

ELEV 435	TDZE 420
REIL Rwy 32	MIRL Rwy 14-32
HIRL Rwys 5R-23L and 5L-23R	TDZ/CL Rwys 23R, 23L and 5L
10000 X 150	7500 X 150
3570 X 100	
0.6% UP	0.4% UP
0.54° 5.5 NM from FAF	FAF to MAP 5.5 NM
Knots: 60, 90, 120, 150, 180	Min:Sec: 5:30, 3:40, 2:45, 2:12, 1:50