

MALNR FIVE ARRIVAL (RNAV)

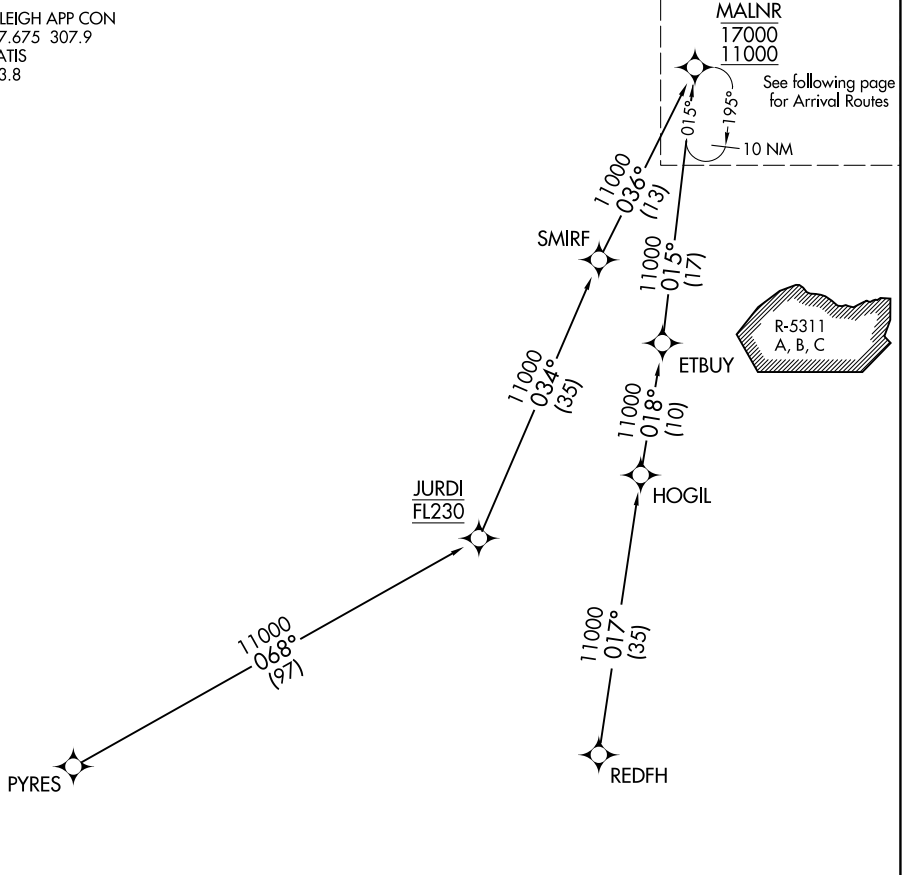
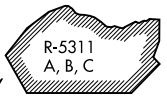
Transition Routes

RALEIGH-DURHAM INTL (RDU)
RALEIGH/DURHAM, NORTH CAROLINA

RALEIGH APP CON
127.675 307.9
D-ATIS
123.8

MALNR
17000
11000

See following page
for Arrival Routes



SE-2, 25 FEB 2021 to 25 MAR 2021

SE-2, 25 FEB 2021 to 25 MAR 2021

PETTO

- NOTE: RADAR required.
- NOTE: RNAV 1.
- NOTE: DME/DME/IRU or GPS required.
- NOTE: Turbojet aircraft only.
- NOTE: REDFH TRANSITION assigned by ATC only.
- NOTE: Jet aircraft descend via MACH number until 280K, maintain 280K until slowed by the STAR or ATC, if unable, advise ATC.

(CONTINUED ON FOLLOWING PAGE)
(NARRATIVE ON FOLLOWING PAGE)

JURDI TRANSITION (JURDI.MALNR5)
PYRES TRANSITION (PYRES.MALNR5)
REDFH TRANSITION (REDFH.MALNR5)

NOTE: Chart not to scale.