

MALNR FIVE ARRIVAL (RNAV)

Arrival Routes

SE-2, 25 FEB 2021 to 25 MAR 2021

RALEIGH APP CON
127.675 307.9
D-ATIS
123.8

NOTE: RADAR required.

NOTE: RNAV 1.

NOTE: DME/DME/IRU or GPS required.

NOTE: Turbojet aircraft only.

NOTE: Jet aircraft descend via MACH number until 280K, maintain 280K until slowed by the STAR or ATC, if unable, advise ATC.

NOTE: LANDING NORTHEAST: Use Rwy 5L transition. Expect runway assignment from TRACON prior to MALNR.

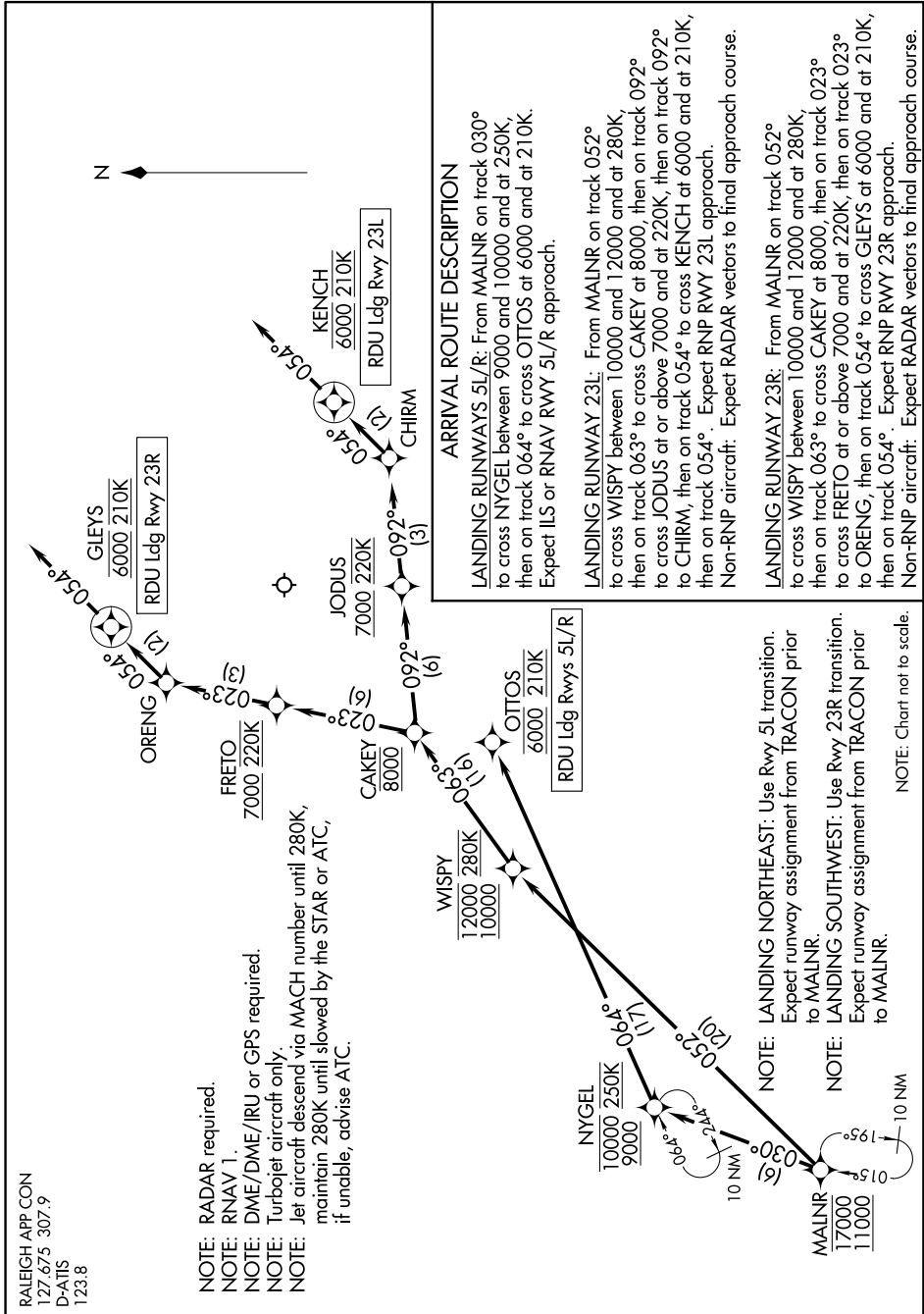
NOTE: LANDING SOUTHWEST: Use Rwy 23R transition. Expect runway assignment from TRACON prior to MALNR.

NOTE: Chart not to scale.

MALNR FIVE ARRIVAL (RNAV)

Arrival Routes

SE-2, 25 FEB 2021 to 25 MAR 2021



ARRIVAL ROUTE DESCRIPTION

LANDING RUNWAYS 5L/R: From MALNR on track 030° to cross NYGEL between 9000 and 10000 and at 250K, then on track 064° to cross OTTOS at 6000 and at 210K. Expect ILS or RNAV RWY 5L/R approach.

LANDING RUNWAY 23L: From MALNR on track 052° to cross WISPY between 10000 and 12000 and at 280K, then on track 063° to cross CAKEY at 8000, then on track 092° to cross JODUS at or above 7000 and at 220K, then on track 092° to CHIRM, then on track 054° to cross KENCH at 6000 and at 210K, then on track 054°. Expect RNP RWY 23L approach. Non-RNP aircraft: Expect RADAR vectors to final approach course.

LANDING RUNWAY 23R: From MALNR on track 052° to cross WISPY between 10000 and 12000 and at 280K, then on track 063° to cross CAKEY at 8000, then on track 023° to cross FRETO at or above 7000 and at 220K, then on track 023° to ORENG, then on track 054° to cross GLEYS at 6000 and at 210K, then on track 054°. Expect RNP RWY 23R approach. Non-RNP aircraft: Expect RADAR vectors to final approach course.