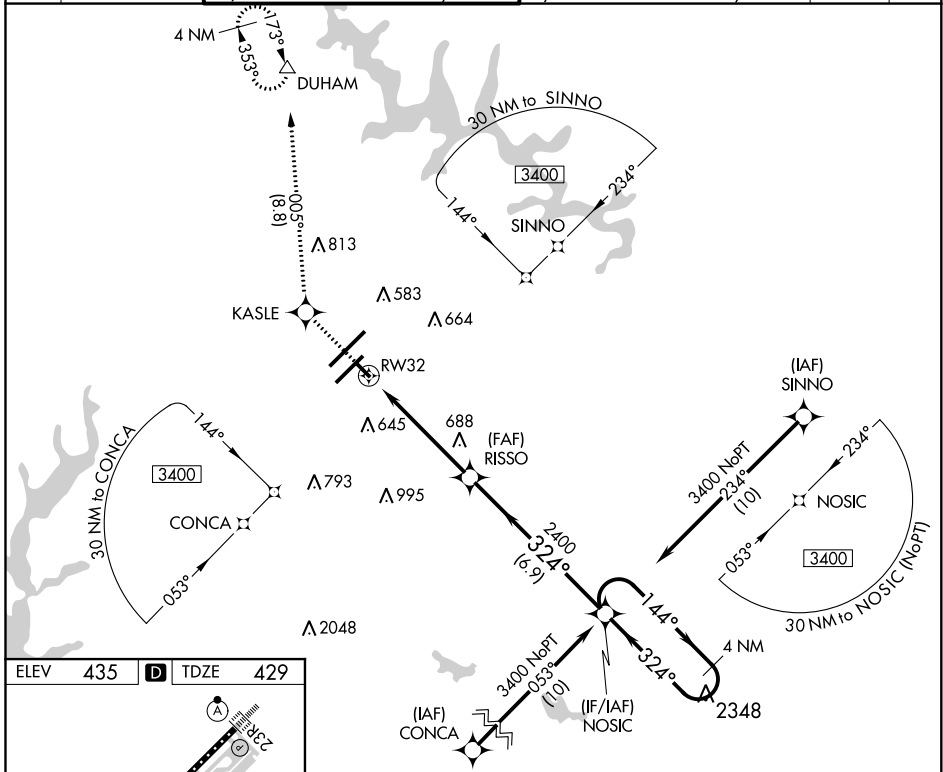


APP CRS	Rwy Idg	<b>3570</b>
<b>324°</b>	TDZE	<b>429</b>
	Apt Elev	<b>435</b>

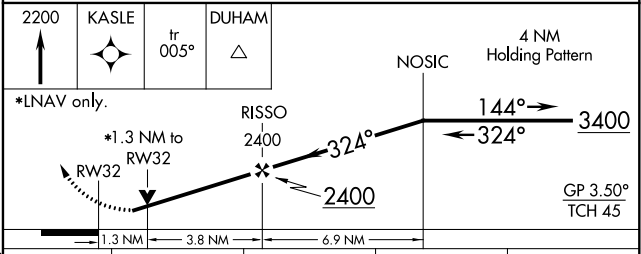
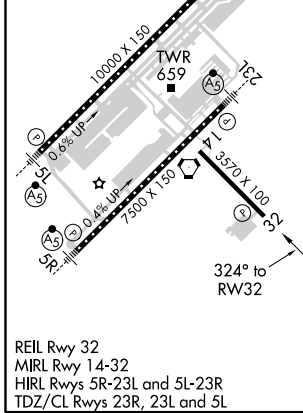
# RNAV (GPS) RWY 32

RALEIGH-DURHAM INTL (RDU)

RNP APCH.		Rwy 32 helicopter visibility reduction below 3/4 SM NA. Baro-VNAV NA below -15°C (5°F) or above 48°C (118°F).		MISSED APPROACH: Climb to 2200 direct KASLE and on track 005° to DUHAM and hold.		
D-ATIS	RALEIGH APP CON	(EAST) RALEIGH TOWER (WEST)	(EAST) GND CON	(WEST)	CLNC DEL	CPDLC
123.8	127.675 307.9	127.45 257.8 Rwys 5R-23L and 14-32	119.3 257.8 Rwy 5L-23R	121.9 348.6 Rwys 5R-23L and 14-32	121.7 348.6 Rwy 5L-23R	120.1



ELEV	435	<b>D</b>	TDZE	429
------	-----	----------	------	-----



CATEGORY	A	B	C	D
LNNAV/VNAV	DA	820-1¼	391 (400-1¼)	NA
LNNAV MDA	1000-1	571 (600-1)	1000-1½ 571 (600-1½)	NA
<b>C</b> CIRCLING	1000-1¼	565 (600-1¼)	1040-1¾ 605 (700-1¾)	NA

SE-2, 25 FEB 2021 to 25 MAR 2021

SE-2, 25 FEB 2021 to 25 MAR 2021