

APP CRS <b>234°</b>	Rwy Idg <b>7500</b>
	TDZE <b>435</b>
	Apt Elev <b>435</b>


# RNAV (RNP) Z RWY 23L

RALEIGH-DURHAM INTL (RDU)

RNP AR APCH-GPS.

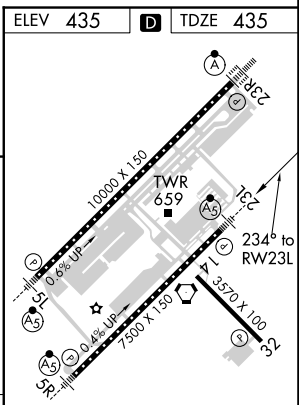
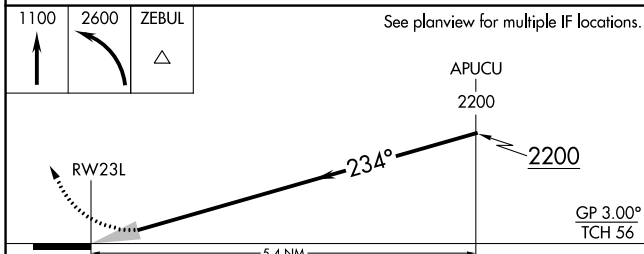
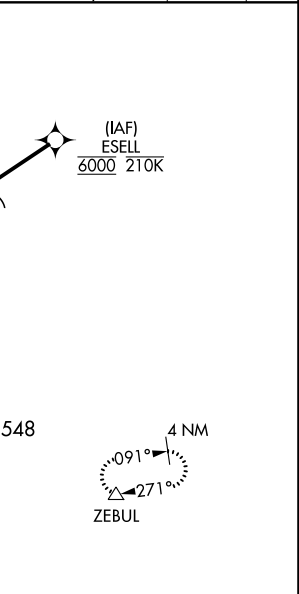
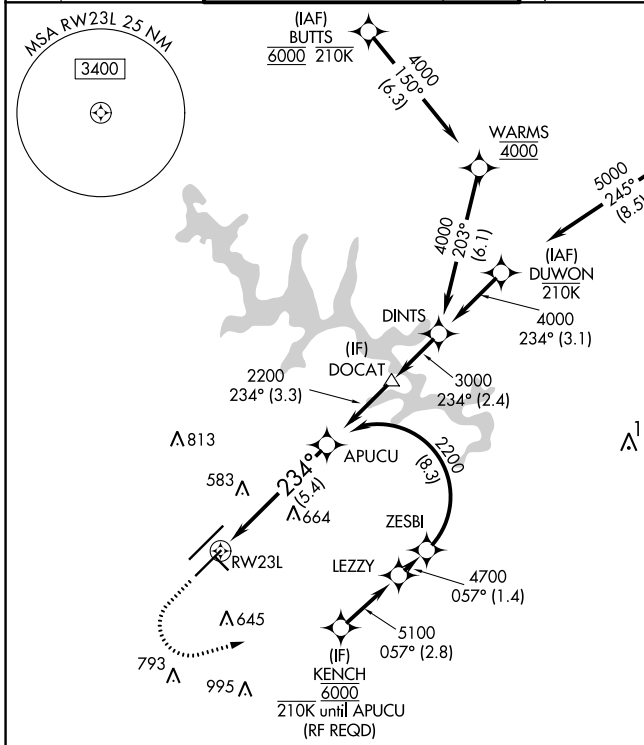
▼ For uncompensated Baro-VNAV systems, procedure NA below -12°C or above 54°C. Simultaneous approach authorized, except for arrivals at KENCH. For inop ALS, increase RNP 0.10 all Cats visibility to RVR 5500.

MALSR



MISSED APPROACH: Climb to 1100 then climbing left turn to 2600 direct ZEBUL and hold.

D-ATIS <b>123.8</b>	RALEIGH APP CON <b>127.675 307.9</b>	(EAST) RALEIGH TOWER (WEST) <b>127.45 257.8</b> Rwys 5R-23L and 14-32	(WEST) <b>119.3 257.8</b> Rwy 5L-23R	(EAST) GND CON (WEST) <b>121.9 348.6</b> Rwys 5R-23L and 14-32	(WEST) <b>121.7 348.6</b> Rwy 5L-23R	CLNC DEL <b>120.1</b>	CPDLC
------------------------	---	---	--	--	--	--------------------------	-------



CATEGORY	A	B	C	D
RNP 0.10 DA		776/30 341 (400-%)		
RNP 0.30 DA		826/35 391 (400-%)		

## AUTHORIZATION REQUIRED

REIL Rwy 32  
MIRL Rwy 14-32  
HIRL Rwys 5R-23L and 5L-23R  
TDZ/CL Rwys 5L, 23L, and 23R

SE-2, 25 FEB 2021 to 25 MAR 2021

SE-2, 25 FEB 2021 to 25 MAR 2021