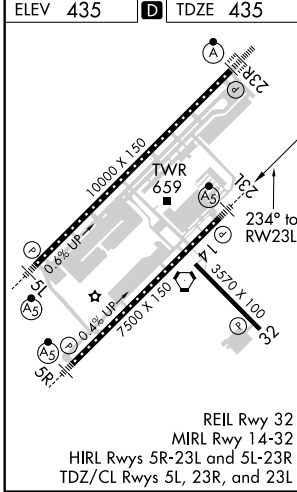
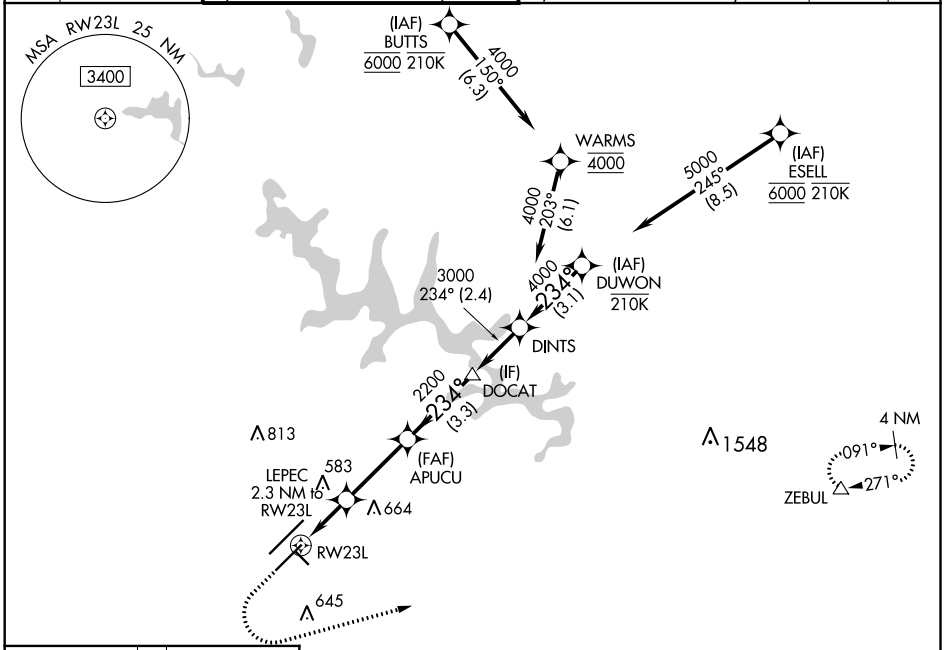


WAAS CH 65713 W23B	APP CRS 234°	Rwy Idg TDZE 435 Apt Elev 435	7500 435 435
--	------------------------	---	---

RNAV (GPS) Y RWY 23L

RALEIGH-DURHAM INTL (RDU)

RNP APCH-GPS.		MALSR		MISSED APPROACH: Climb to 1100 then climbing left turn to 2600 direct ZEBUL and hold.		
<p>Simultaneous approach authorized. LNAV procedure NA during simultaneous operations. For uncompensated Baro-VNAV systems, LNAV/VNAV NA below -1.2°C or above 5.4°C. Use of FD or AP required during simultaneous operations. For inop ALS, increase LNAV Cat C/D visibility to 1 3/8 SM.</p>						
D-ATIS	RALEIGH APP CON	(EAST) RALEIGH TOWER (WEST)	(EAST) GND CON	(WEST)	CLNC DEL	CPDLC
123.8	127.675 307.9	127.45 257.8 Rwys 5R-23L and 14-32	119.3 257.8 Rwy 5L-23R	121.9 348.6 Rwys 5R-23L and 14-32	121.7 348.6 Rwy 5L-23R	120.1



ELEV 435	TDZE 435	1100	2600	ZEBUL
* LNAV only.				
	LEPEC 2.3 NM to RWY 23L	APUCU 2200	DOCAT 3000	DINTS 4000
	*1.4 NM to RWY 23L			DUWON 5000
	1200*	2200	3000	4000
	1.4 NM	0.9 NM	3.1 NM	3.3 NM
			2.4 NM	3.1 NM
CATEGORY	A	B	C	D
LPV DA		635/18	200 (200-1/2)	
LNAV/VNAV DA		820/35	385 (400-5/8)	
LNAV MDA	920/24	485 (500-1/2)	920/50	485 (500-1)
CIRCLING	960-1	525 (600-1)	1020-1 1/2 585 (600-1 1/2)	1180-2 1/2 745 (800-2 1/2)

GP 3.00°
TCH 56

SE-2, 25 FEB 2021 to 25 MAR 2021

SE-2, 25 FEB 2021 to 25 MAR 2021