

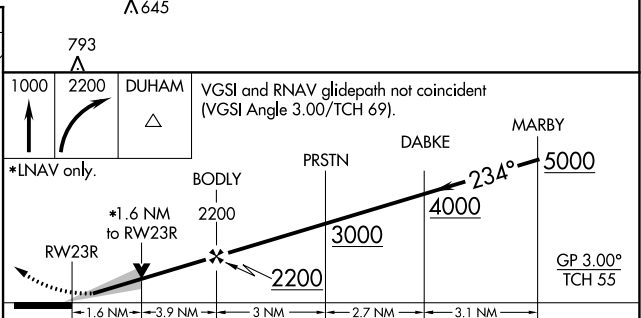
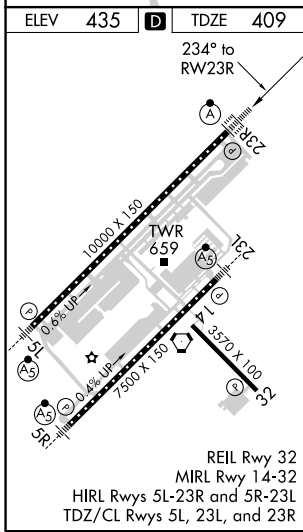
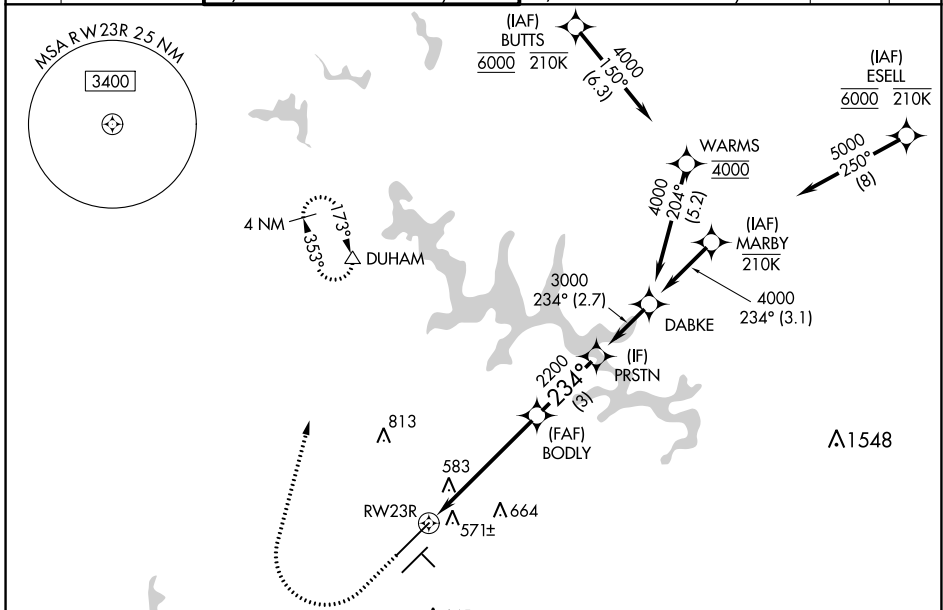
WAAS <b>CH 45613</b> <b>W23A</b>	APP CRS <b>234°</b>	Rwy Idg <b>10000</b>
		TDZE <b>409</b>
		Apt Elev <b>435</b>

# RNAV (GPS) Y RWY 23R

RALEIGH-DURHAM INTL (RDU)

RNP APCH - GPS.		ALSIF-2	MISSED APPROACH: Climb to 1000 then climbing right turn to 2200 direct DUHAM and hold.
<p>Simultaneous approach authorized. LNAV procedure NA during simultaneous operations.</p> <p>Use of FD or AP providing RNAV track guidance required during simultaneous operations.</p> <p>For uncompensated Baro-VNAV systems, LNAV/VNAV NA below -12°C or above 54°C.</p> <p>For inop ALS, increase LNAV Cat C/D visibility to 1% SM.</p>			

D-ATIS	RALEIGH APP CON	(EAST) RALEIGH TOWER	(WEST)	(EAST) GND CON	(WEST)	CLNC DEL	CPDLC
<b>123.8</b>	<b>127.675 307.9</b>	<b>127.45 257.8</b>	<b>119.3 257.8</b>	<b>121.9 348.6</b>	<b>121.7 348.6</b>	<b>120.1</b>	
		Rwys 5R-23L and 1-4-32	Rwy 5L-23R	Rwys 5R-23L and 1-4-32	Rwy 5L-23R		



CATEGORY	A	B	C	D
LPV DA		609/18	200 (200-1/2)	
LNAV/VNAV DA		735/26	326 (300-1/2)	
LNAV MDA	980/24	571 (600-1/2)	980-1 1/4	571 (600-1 1/4)
CIRCLING	980-1	545 (600-1)	1020-1 5/8 585 (600-1 5/8)	1180-2 1/2 745 (800-2 1/2)

SE-2, 25 FEB 2021 to 25 MAR 2021

SE-2, 25 FEB 2021 to 25 MAR 2021