

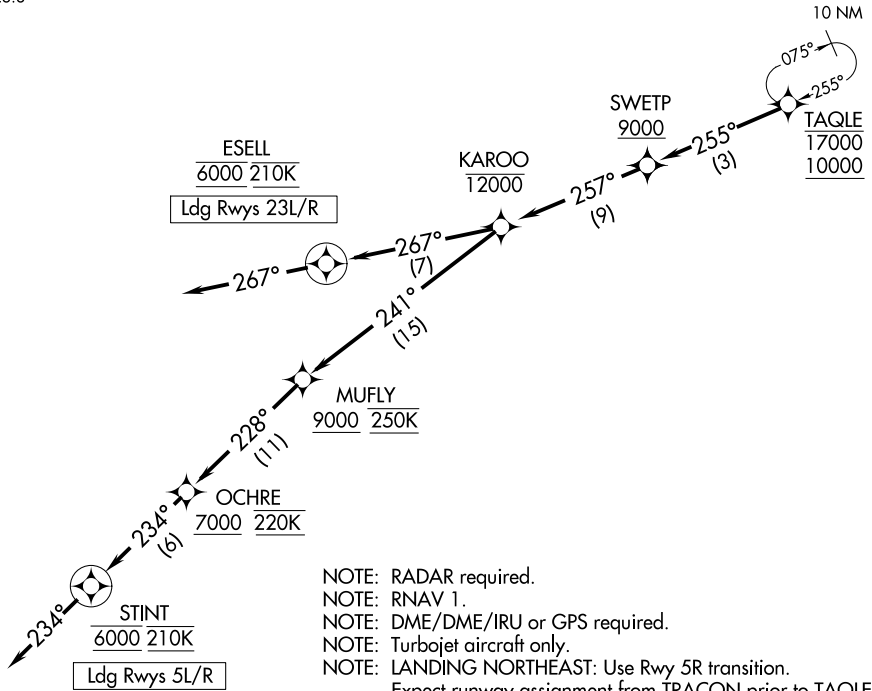
(TAQLE.TAQLE1) 21056

AL-516 (FAA)

RALEIGH-DURHAM INTL (RDU)  
RALEIGH/DURHAM, NORTH CAROLINA

# TAQLE ONE ARRIVAL (RNAV) Arrival Routes

RALEIGH APP CON  
124.95 318.2  
D-ATIS  
123.8



- NOTE: RADAR required.
- NOTE: RNAV 1.
- NOTE: DME/DME/IRU or GPS required.
- NOTE: Turbojet aircraft only.
- NOTE: LANDING NORTHEAST: Use Rwy 5R transition. Expect runway assignment from TRACON prior to TAQLE.
- NOTE: LANDING SOUTHWEST: Use Rwy 23L transition. Expect runway assignment from TRACON prior to TAQLE.

NOTE: Chart not to scale.

## ARRIVAL ROUTE DESCRIPTION

From TAQLE on track 255° to cross SWETP at or above 9000, then on track 257° to cross KAROO at or below 12000.

**LANDING RUNWAYS 5L/R:** From KAROO on track 241° to cross MUFLY at or above 9000 and at 250K, then on track 228° to cross OCHRE at or above 7000 and at 220K, then on track 234° to cross STINT at 6000 and at 210K, then on track 234°. Expect RNP RWY 5R approach. Non-RNP aircraft: Expect RADAR vectors to final approach course.

**LANDING RUNWAYS 23L/R:** From KAROO on track 267° to cross ESELL at 6000 and at 210K, then on track 267°. Expect ILS or RNAV RWY 23L/R approach.

TAQLE ONE ARRIVAL (RNAV) Arrival Routes  
(TAQLE.TAQLE1) 25FEB21

RALEIGH/DURHAM, NORTH CAROLINA  
RALEIGH-DURHAM INTL (RDU)

SE-2, 25 FEB 2021 to 25 MAR 2021

SE-2, 25 FEB 2021 to 25 MAR 2021