

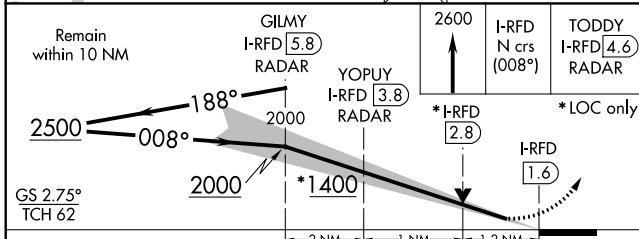
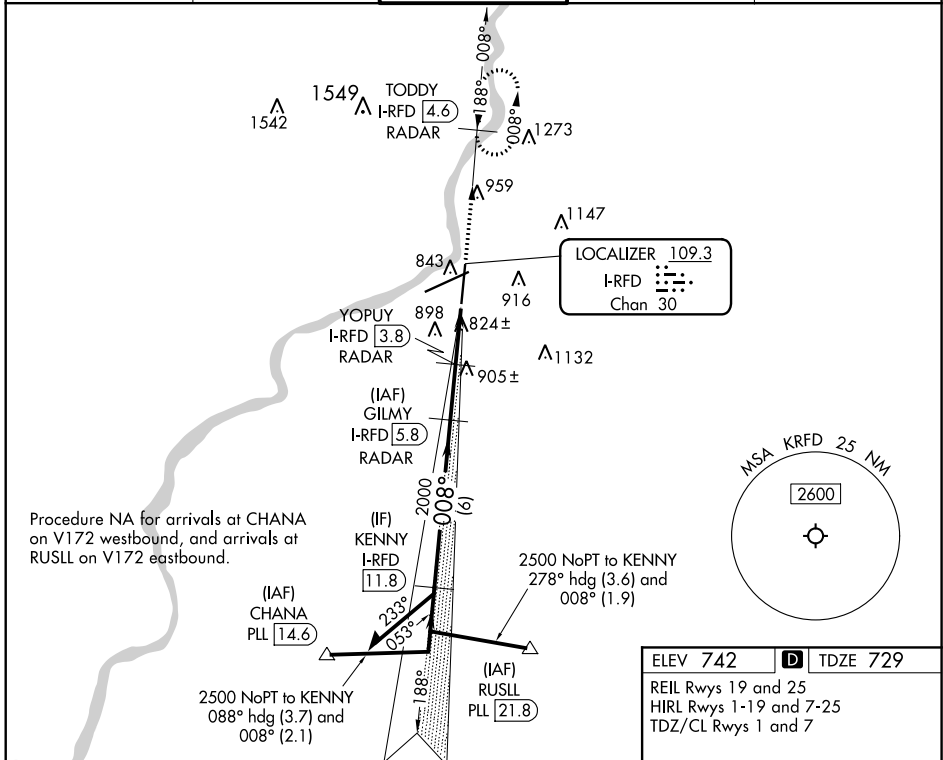
LOC/DME I-RFD 109.3 Chan 30	APP CRS 008°	Rwy ldg 8199 TDZE 729 Apt Elev 742
------------------------------------------	------------------------	---------------------------------------------------------------

ILS or LOC RWY 1

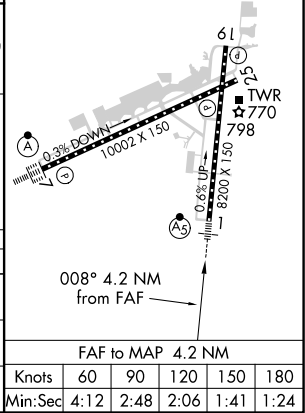
CHICAGO/ROCKFORD INTL (RFD)

DME or RADAR required.		MALS R	MISSED APPROACH: Climb to 2600 on I-RFD localizer N course (008°) to TODDY/4.6 DME/RADAR and hold, continue climb-in-hold to 2600.
ASR	For open ALS, increase S-LOC 1 Cat C/D visibility to RVR 6000.		

ATIS 127.6	ROCKFORD APP CON 121.0 327.0	ROCKFORD TOWER 118.1 290.375	GND CON 121.9 290.375	CLNC DEL 119.25
----------------------	----------------------------------------	----------------------------------------	---------------------------------	---------------------------



ELEV 742	TDZE 729
REIL Rwy 19 and 25	
HIRL Rwy 1-19 and 7-25	
TDZ/CL Rwy 1 and 7	



CATEGORY	A	B	C	D
S-ILS 1	929/24		200 (200-½)	
S-LOC 1	1140/24	411 (400-½)	1140/40	411 (400-¾)
CIRCLING	1220-1 478 (500-1)	1280-1 538 (600-1)	1320-1½ 578 (600-1½)	1460-2¼ 718 (800-2¼)

EC-3, 25 FEB 2021 to 25 MAR 2021

EC-3, 25 FEB 2021 to 25 MAR 2021