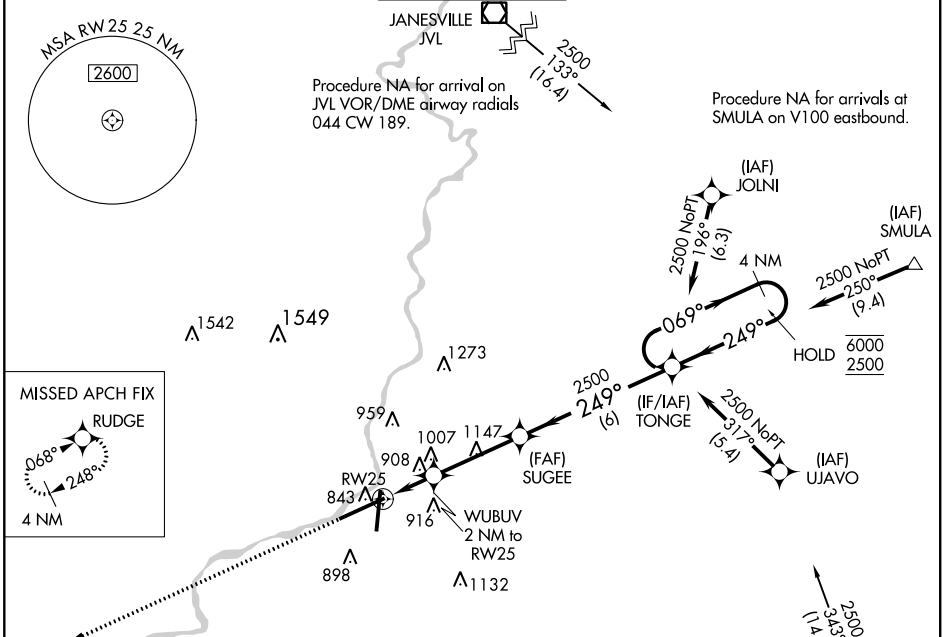


WAAS CH 40128 W25A	APP CRS 249°	Rwy Idg 10002 TDZE 736 Apt Elev 742
--	------------------------	--

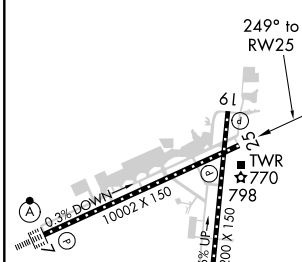
RNAV (GPS) RWY 25

CHICAGO/ROCKFORD INTL (RFD)

RNP APCH.			MISSED APPROACH: Climb to 2500 direct RUDGE and hold.	
<p>⚠ Rwy 25 helicopter visibility reduction below $\frac{3}{4}$ SM NA. For uncompensated Baro-VNAV systems, LNAV/VNAV NA below -25°C or above 39°C.</p>				
ATIS 127.6	ROCKFORD APP CON 121.0 327.0	ROCKFORD TOWER 118.1 290.375	GND CON 121.9 290.375	CLNC DEL 119.25



ELEV 742	D	TDZE 736
-----------------	----------	-----------------



2500	RUDGE	VGSI and RNAV glidepath not coincident (VGSI Angle 3.00/TCH 75).	4 NM
			Holding Pattern
	SUGEE	TONGUE	
	2500	2500	
		069° → 6000	
		← 249° 2500	
			GP 3.00° TCH 50

CATEGORY	A	B	C	D
LPV DA		986/50	250 (300-1)	
LNAV/VNAV DA		1191-1 $\frac{3}{8}$	455 (500-1 $\frac{3}{8}$)	
LNAV MDA		1160/55	424 (500-1)	
C CIRCLING	1220-1 478 (500-1)	1280-1 538 (600-1)	1320-1 $\frac{1}{2}$ 578 (600-1 $\frac{1}{2}$)	1460-2 $\frac{1}{4}$ 718 (800-2 $\frac{1}{4}$)

REIL Rwy 19 and 25
HIRL Rwy 1-19 and 7-25
TDZ/CL Rwy 1 and 7

EC-3, 25 FEB 2021 to 25 MAR 2021

EC-3, 25 FEB 2021 to 25 MAR 2021