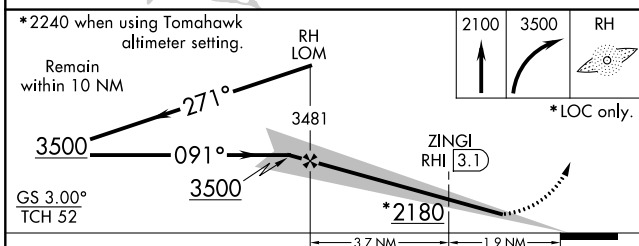
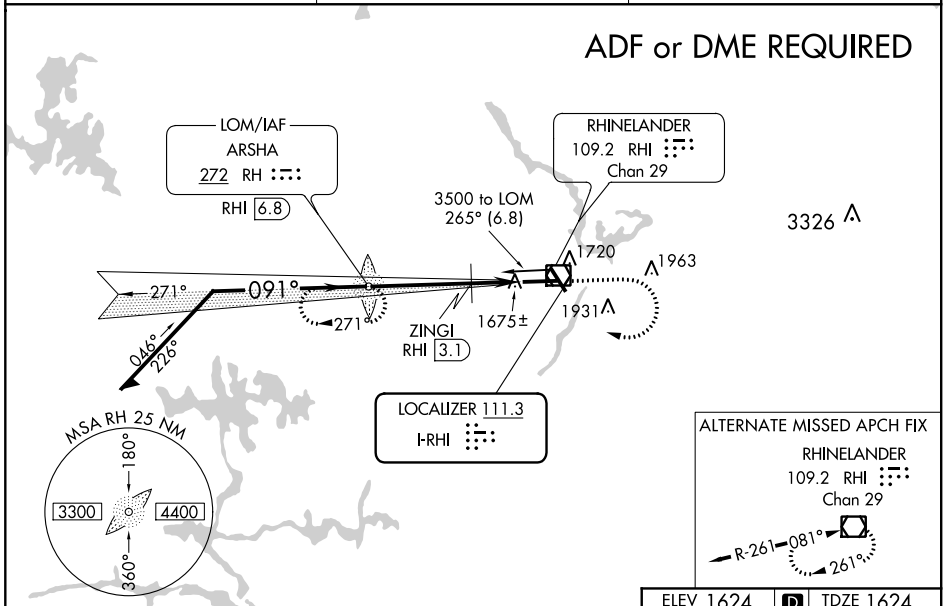


LOC I-RHI 111.3	APP CRS 091°	Rwy Idg 6799
		TDZE 1624
		Apt Elev 1624

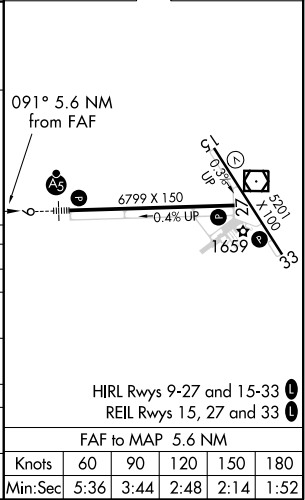
ILS or LOC RWY 9
RHINELANDER-ONEIDA COUNTY (RHI)

<p>ADF required. When local altimeter setting not received, use Tomahawk altimeter setting and increase DA 59 feet and MDA 60 feet, increase S-LOC 9 and Circling Cats C and D visibility ¼ mile, and increase ZINGI Fix Minimums S-LOC 9 and Circling Cats C and D visibility ¼ mile. **DME from RHI VOR/DME.</p>	<p>MALSR</p>	<p>MISSED APPROACH: Climb to 2100 then climbing right turn to 3500 direct ARSHA LOM/RHI 6.8 DME and hold.</p>
<p>ASOS 126.825</p>	<p>MINNEAPOLIS CENTER 133.65 281.5</p>	<p>UNICOM 123.0 (CTAF)</p>



ELEV 1624	D	TDZE 1624
-----------	---	-----------

CATEGORY	A	B	C	D
S-ILS 9	1824-½ 200 (200-½)			
S-LOC 9	2180-½	556 (600-½)	2180-1	2180-1¼
CIRCLING	2180-1 556 (600-1)	2220-1 596 (600-1)	2260-1¾ 636 (700-1¾)	2260-2 636 (700-2)
ZINGI FIX MINIMUMS**				
S-LOC 9	2020-½ 396 (400-½)		2020-¾ 396 (400-¾)	
CIRCLING	2060-1 436 (500-1)	2220-1 596 (600-1)	2260-1¾ 636 (700-1¾)	2260-2 636 (700-2)



EC-3, 25 FEB 2021 to 25 MAR 2021

EC-3, 25 FEB 2021 to 25 MAR 2021