

APP CRS	Rwy Idg	5201
150°	TDZE	1600
	Apt Elev	1624

RNAV (GPS) RWY 15

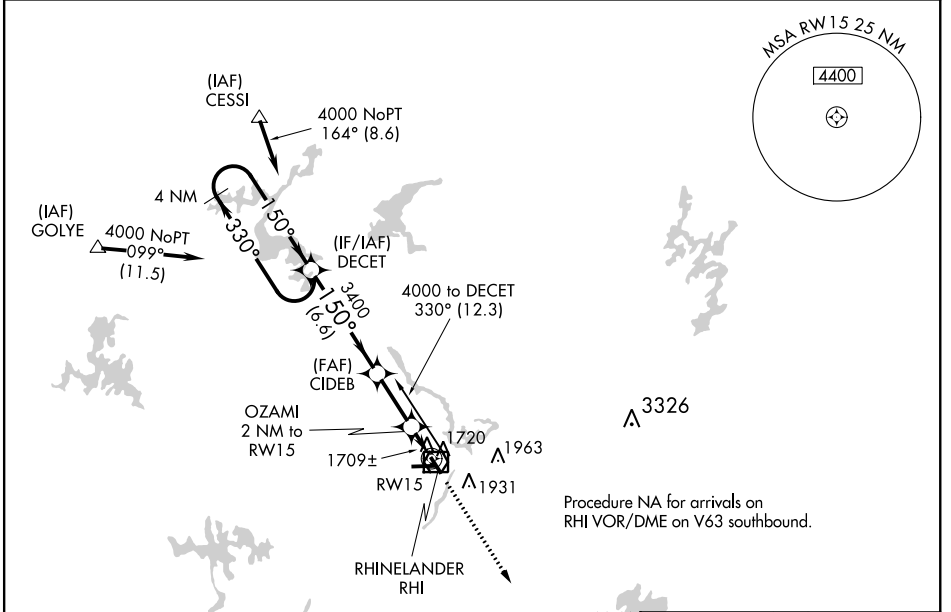
RHINELANDER-ONEIDA COUNTY (RHI)

⚠ Helicopter visibility reduction below 3/4 SM NA. DME/DME RNP-0.3 NA. When local altimeter setting not received, use Tomahawk altimeter setting and increase all MDA 60 feet, increase LNAV and Circling visibility Cats C/D 1/4 mile.

⚠ MISSED APPROACH: Climb to 3500 direct CIREN and hold.

❄ -31°C

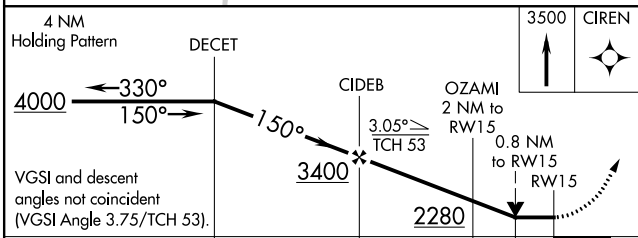
ASOS 126.825	MINNEAPOLIS CENTER 133.65 281.5	UNICOM 123.0 (CTAF) 📶
------------------------	---	--



EC-3, 25 FEB 2021 to 25 MAR 2021

EC-3, 25 FEB 2021 to 25 MAR 2021

ELEV 1624 **D** TDZE 1600



CATEGORY	A	B	C	D
LNAV MDA	1980-1 380 (400-1)			1980-1 1/4 380 (400-1 1/4)
CIRCLING	2060-1 436 (500-1)	2220-1 596 (600-1)	2260-1 3/4 636 (700-1 3/4)	2260-2 636 (700-2)

HIRL Rwy 9-27 and 15-33 **📶**
REIL Rwy 15, 27 and 33 **📶**