

WAAS CH 50217 W27A	APP CRS 271°	Rwy Idg TDZE Apt Elev	6799 1606 1624
--	------------------------	-----------------------------	---

RNAV (GPS) RWY 27

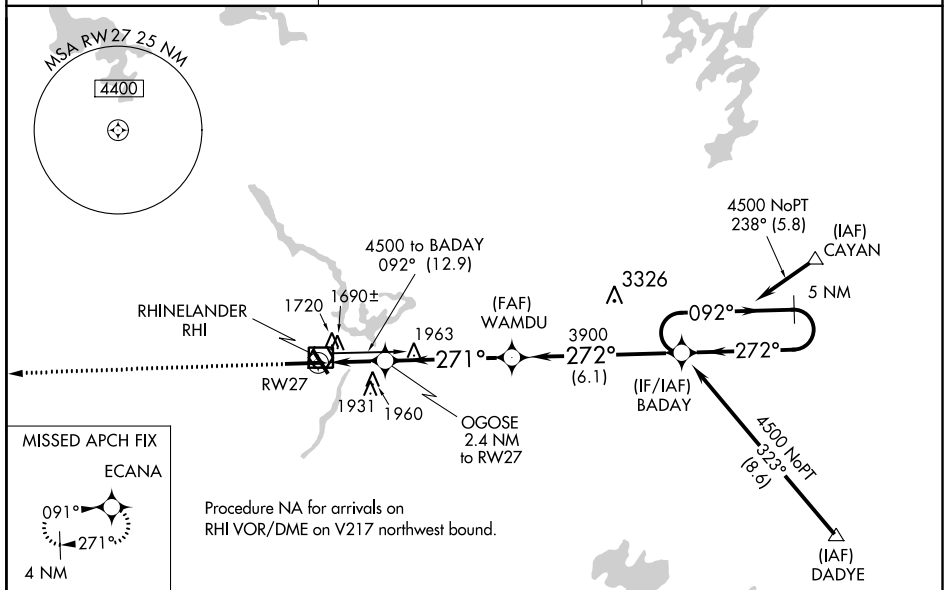
RHINELANDER-ONEIDA COUNTY (RHI)

⚠ For uncompensated Baro-VNAV systems, LNAV/VNAV NA below -18°C (0°F) or above 46°C (114°F). DME/DME RNP-0.3 NA. When local altimeter setting not received, use Tomahawk altimeter setting and increase all DA and MDA 60 feet, increase LPV and LNAV/VNAV visibility all Cats, LNAV and Circling visibility Cats C/D ¼ mile. Baro-VNAV and VDP NA when using Tomahawk altimeter setting.

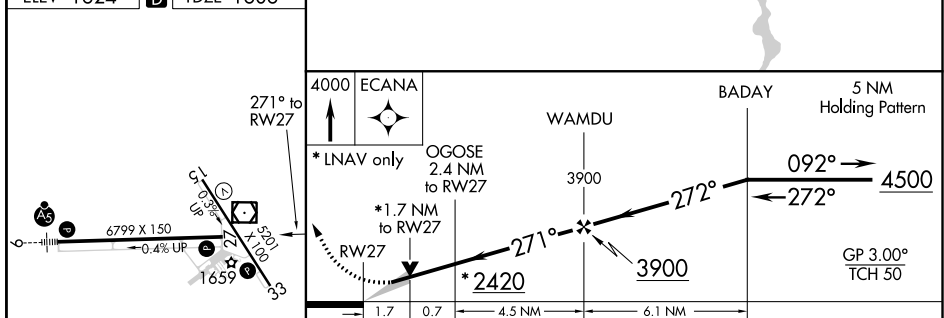
❄ -31°C

MISSED APPROACH:
Climb to 4000 direct ECANA and hold.

ASOS 126.825	MINNEAPOLIS CENTER 133.65 281.5	UNICOM 123.0 (CTAF) 0
------------------------	---	---------------------------------



ELEV 1624	D	TDZE 1606
-----------	----------	-----------



CATEGORY	A	B	C	D
LPV DA	1806-¾ 200 (200-¾)			
LNAV/VNAV DA	1983-1¼ 377 (400-1¼)			
LNAV MDA	2180-1	574 (600-1)	2180-1½ 574 (600-1½)	2180-1¾ 574 (600-1¾)
CIRCLING	2180-1 556 (600-1)	2220-1 596 (600-1)	2260-1¾ 636 (700-1¾)	2260-2 636 (700-2)

HIRL Rwy 9-27 and 15-33 **0**
REIL Rwy 15, 27 and 33 **0**

RHINELANDER, WISCONSIN
Amdt 1C 02MAR17

45°38'N-89°28'W

RNAV (GPS) RWY 27

EC-3, 25 FEB 2021 to 25 MAR 2021

EC-3, 25 FEB 2021 to 25 MAR 2021