

WAAS CH 69407 W33A	APP CRS 330°	Rwy Idg TDZE 1611 Apt Elev 1624	5201 1611 1624
--	------------------------	---	---

RNAV (GPS) RWY 33

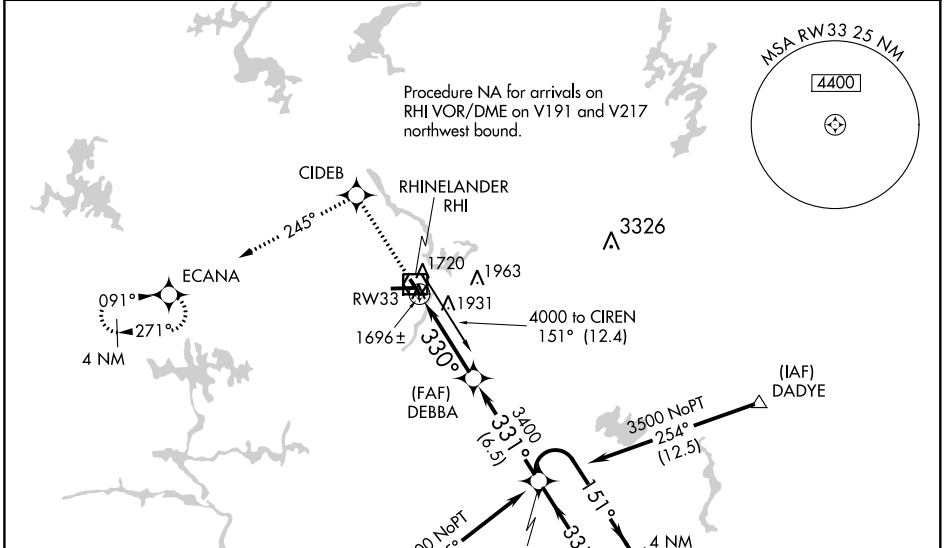
RHINELANDER-ONEIDA COUNTY (RHI)

▽
▲
☼ -31°C

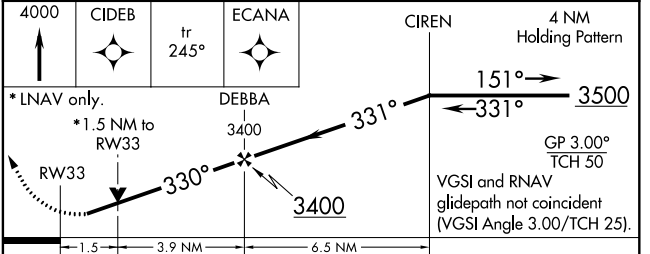
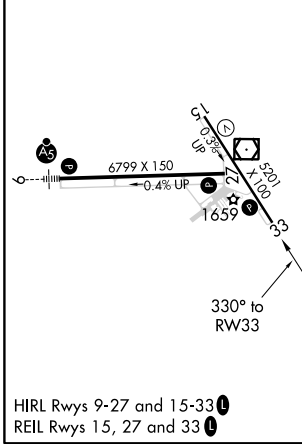
Baro-VNAV NA when using Tomahawk altimeter setting. For uncompensated Baro-VNAV systems, LNAV/VNAV NA below -18°C (0°F) or above 45°C (113°F). Helicopter visibility reduction below ¼ SM NA. DME/DME RNP-0.3 NA. When local altimeter setting not received, use Tomahawk altimeter setting and increase all DA and MDA 60 feet, increase visibility LNAV/VNAV all Cats ¼, LNAV Cat D and Circling Cats C/D ¼ mile.

MISSED APPROACH:
Climb to 4000 direct CIDEB and on track 245° to ECANA and hold.

ASOS 126.825	MINNEAPOLIS CENTER 133.65 281.5	UNICOM 123.0 (CTAF) 0
------------------------	---	--



ELEV 1624	D	TDZE 1611
-----------	----------	-----------



CATEGORY	A	B	C	D
LPV DA		1862-1	250 (300-1)	
LNAV/VNAV DA		2257-2 ¼	645 (700-2 ¼)	
LNAV MDA	2120-1	508 (500-1)	2120-1 ½	508 (500-1 ½)
CIRCLING	2120-1 496 (500-1)	2220-1 596 (600-1)	2260-1 ¾ 636 (700-1 ¾)	2260-2 636 (700-2)

EC-3, 25 FEB 2021 to 25 MAR 2021

EC-3, 25 FEB 2021 to 25 MAR 2021