

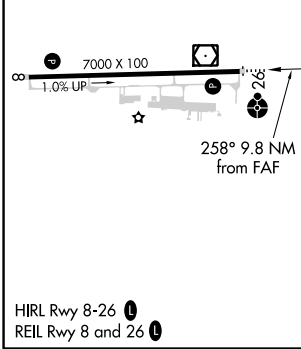
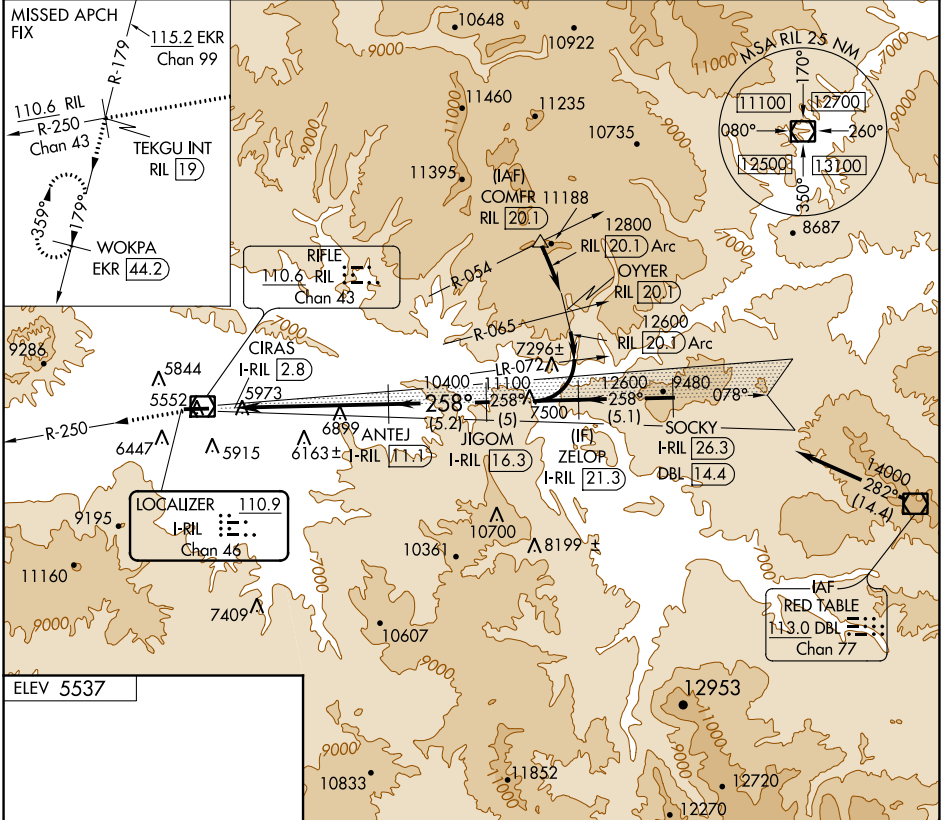
LOC/DME I-RIL <b>110.9</b> Chan <b>46</b>	APP CRS <b>258R</b>	Rwy Idg TDZE Apt Elev <b>5537</b>	<b>N/A</b> <b>N/A</b>
---	------------------------	--	--------------------------

# LOC/DME-A

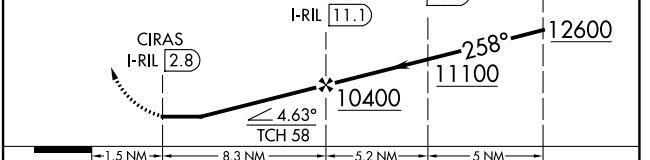
RIFLE GARFIELD COUNTY (RIL)

<b>V</b> Visibility reduction by helicopters NA. Use I-RIL DME when on localizer course.	<b>MISSED APPROACH:</b> Climb to 13000 on RIL VOR/DME R-250 to TEKGU INT/RIL 19 DME and on EKR VOR/DME R-179 to WOKPA/EKR 44.2 DME and hold, continue climb-in-hold to 13000.
<b>A</b> -14°C <b>3</b> Circling NA south of Rwy 8-26 at night.	

ASOS <b>135.275</b>	DENVER CENTER <b>134.95 327.075</b>	UNICOM <b>122.8 (CTAF)</b>
------------------------	--	-------------------------------



13000 ↑ RIL R-250	TEKGU INT RIL 19	EKR R-179	WOKPA EKR 44.2	VGSI and descent angles not coincident (VGSI Angle 3.60/TCH 58).	ZELOP I-RIL 21.3
-------------------------	---------------------	-----------	-------------------	---	---------------------



CATEGORY	A	B	C	D
<b>C</b> CIRCLING	7780-1¾	2243 (2300-1¾)	7780-3 2243 (2300-3)	NA

SW-1, 25 FEB 2021 to 25 MAR 2021

SW-1, 25 FEB 2021 to 25 MAR 2021