

APP CRS	Rwy Idg	7000
259°	TDZE	5537
	Apt Elev	5537

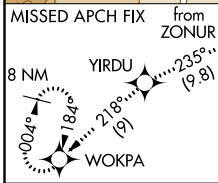
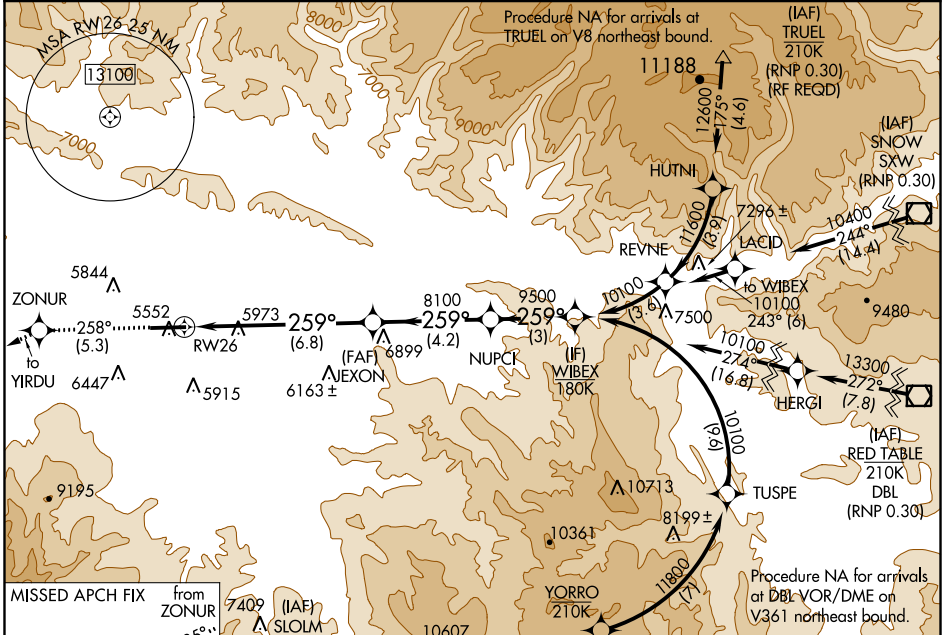
RNAV (RNP) Y RWY 26

RIFLE GARFIELD COUNTY (RIL)

When VGSI inoperative, procedure NA at night. For uncompensated Baro-VNAV systems, procedure NA below -24°C (-11°F) or above 38°C (100°F). GPS required.

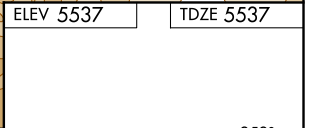
ODALS MISSED APPROACH: Climb to 13000 on track 258° to ZONUR and track 235° to YIRDU and track 218° to WOKPA and hold, continue climb-in-hold to 13000.

ASOS 135.275	DENVER CENTER 134.95 327.075	UNICOM 122.8 (CTAF) 0
------------------------	--	---------------------------------



13000	ZONUR	YIRDU	WOKPA
↑	✦	✦	✦
tr 258°	tr 235°	tr 218°	

	JEXON	NUPCI	WIBEX
	8100	9500	10100
	8100		
	6.8 NM	4.2 NM	3 NM



AUTHORIZATION REQUIRED

SW-1, 25 FEB 2021 to 25 MAR 2021

SW-1, 25 FEB 2021 to 25 MAR 2021

HIRL Rwy 8-26 0
REIL Rwy 8 and 26 0