

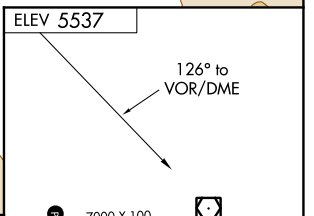
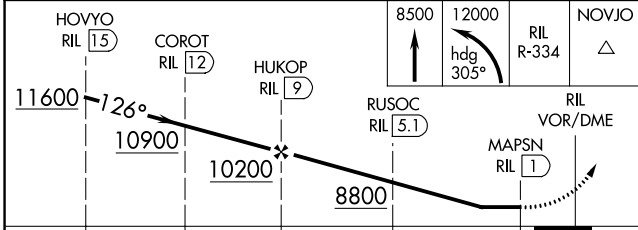
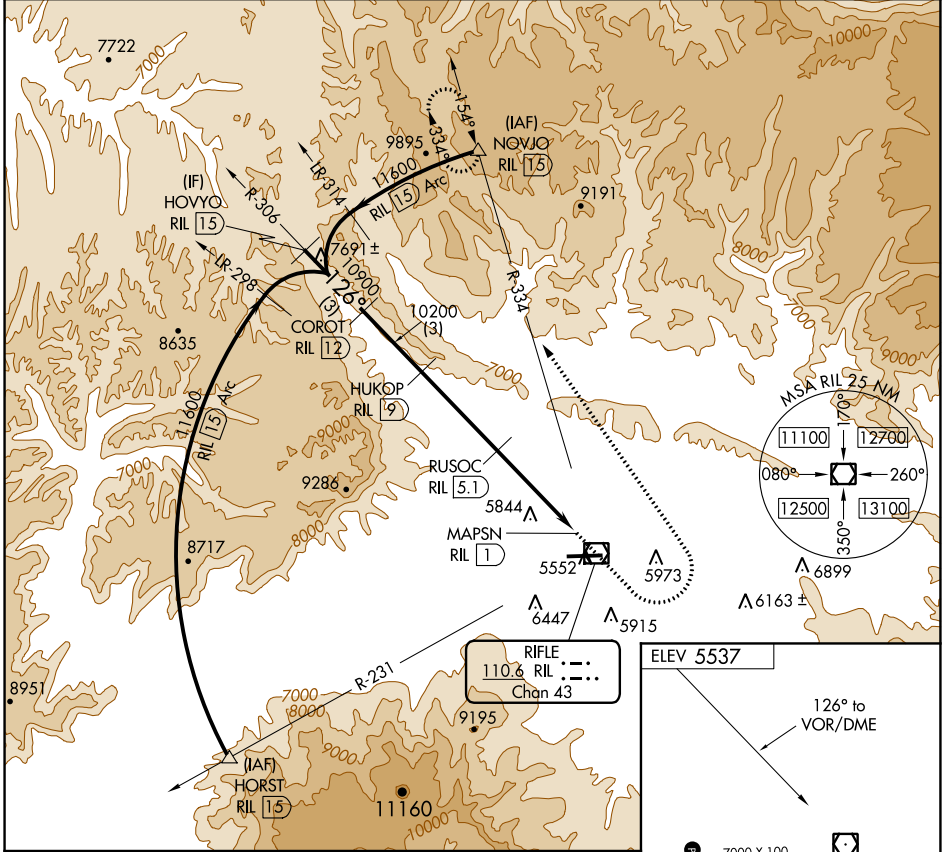
VOR/DME RIL <b>110.6</b> Chan 43	APP CRS <b>126°</b>	Rwy Idg TDZE Apt Elev <b>N/A</b> <b>N/A</b> <b>5537</b>
----------------------------------------	------------------------	------------------------------------------------------------------------

**VOR/DME-C**  
RIFLE GARFIELD COUNTY (RIL)

**⚠** Circling NA south of Rwy 8-26 at night.  
**⚠** -14°C

MISSED APPROACH: Climb to 8500 then climbing left turn 12000 on heading 305° and RIL VOR/DME R-334 to NOVJO/15 DME and hold, continue climb-in-hold to 12400.

ASOS <b>135.275</b>	DENVER CENTER <b>134.95 327.075</b>	UNICOM <b>122.8 (CTAF)</b>
------------------------	----------------------------------------	-------------------------------



CATEGORY	A	B	C	D
<b>C</b> CIRCLING	7360-1¼ 1823 (1900-1¼)	7360-1½ 1823 (1900-1½)	7360-3 1823 (1900-3)	NA

HIRL Rwy 8-26 **⓪**  
REIL Rwy 8 and 26 **⓪**

SW-1, 25 FEB 2021 to 25 MAR 2021

SW-1, 25 FEB 2021 to 25 MAR 2021