

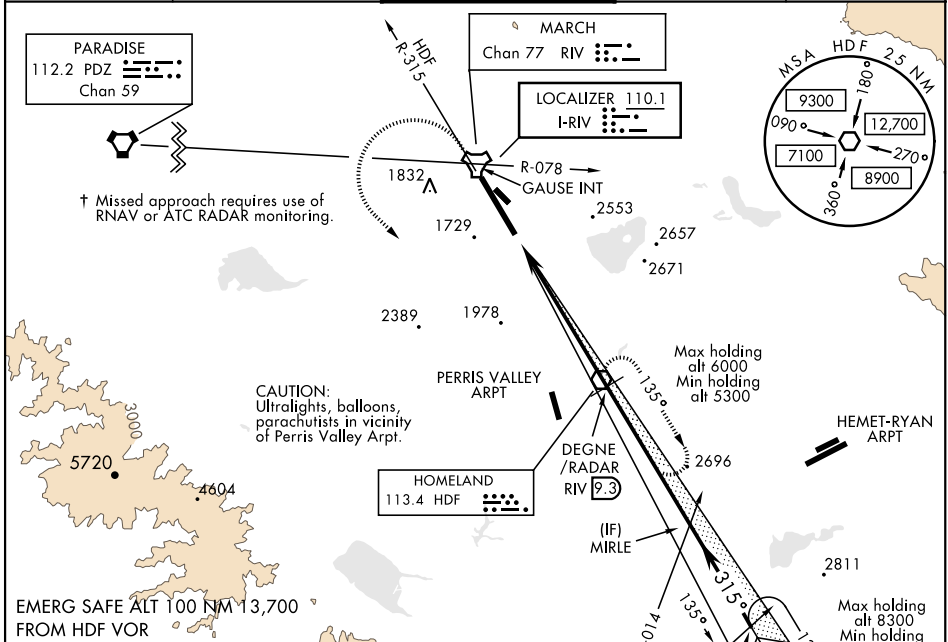
ILS or LOC Y RWY 32

LOC I-RIV 110.1	APCH CRS 315°	Rwy Ldg 13,302 TDZE 1497 Arpt Elev 1536	AL-348 [USAF]	MARCH ARB (KRIV)
---------------------------	-------------------------	--	---------------	------------------

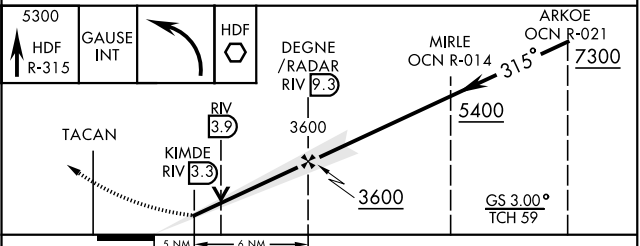
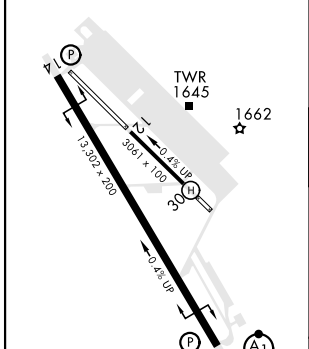
▼ *When ALS inop, increase CAT ABCDE RVR to 40 and vis to ¾ mile.
 **When ALS inop, increase CAT AB RVR to 55 and vis to 1 mile,
 CAT CDE RVR to 60 and vis to 1 ½ miles.
 ***Circling not authorized NE of Rwy 14-32. Rapid rising terrain.

† MISSED APPROACH: Climb to 5300 on HDF VOR R-315 to GAUSE, turn left direct HDF continue climb in hold to 5300.

ATIS 134.75 239.05	SOCAL APP CON 134.0 278.3	MARCH TOWER 127.65 253.5	GND CON 121.75 335.8	CLNC DEL 121.75 335.8
------------------------------	-------------------------------------	------------------------------------	--------------------------------	---------------------------------



ELEV 1536	TDZE 1497
-----------	-----------



CATEGORY	A	B	C	D	E
S-ILS 32*	1697/24		200	(200-½)	
S-LOC 32**	1900/24 403 (400-½)		1900/40 403 (400-¾)		
***CIRCLING	2180-1 644 (700-1)	2260-1 724 (800-1)	2300-2¼ 764 (800-2¼)	2440-3 904 (1000-3)	2840-3 1304 (1400-3)

ILS or LOC Y RWY 32

SW-3, 25 FEB 2021 to 25 MAR 2021

SW-3, 25 FEB 2021 to 25 MAR 2021