

VOR Y RWY 32

VOR HDF 113.4	APCH CRS 315°	Rwy ldg 13,302 TDZE 1497 Arprt Elev 1536
-------------------------	-------------------------	---

AL-348 [USAF]

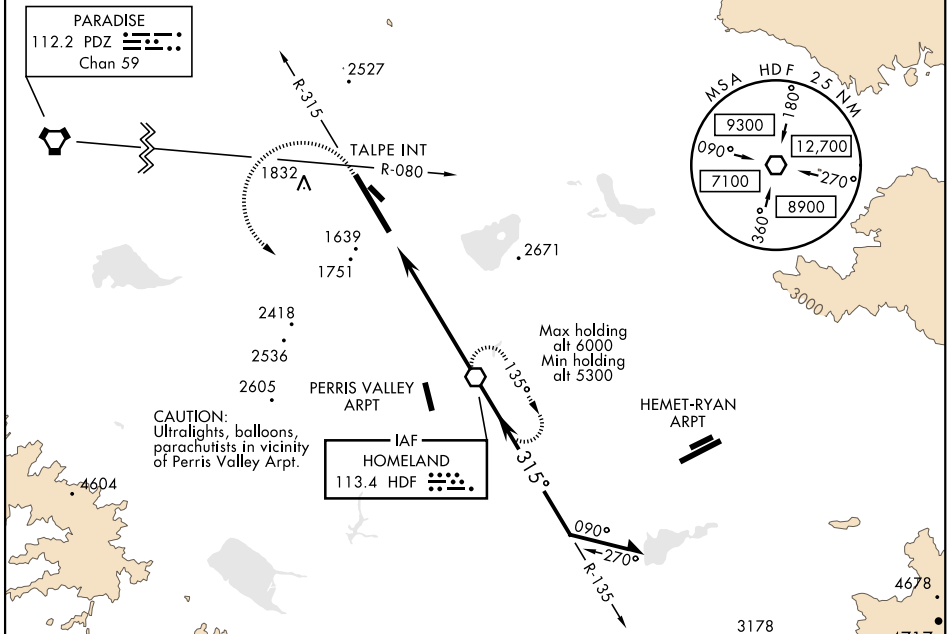
MARCH ARB (KRIV)

▼ *When ALS inop, increase CAT AB RVR to 60 and vis to 1½ mile, CAT CDE vis to 1½ miles.
 **Circling not authorized NE of Rwy 14-32. Rapid rising terrain.



MISSED APPROACH: Climb to 5300 on HDF VOR R-315 to TALPE, then turn left direct HDF continue climb-in-hold to 5300.

ATIS 134.75 239.05	SOCAL APP CON 134.0 278.3	MARCH TOWER 127.65 253.5	GND CON 121.75 335.8	CLNC DEL 121.75 335.8
------------------------------	-------------------------------------	------------------------------------	--------------------------------	---------------------------------

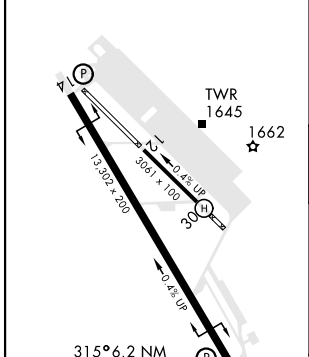


CAUTION: Ultralights, balloons, parachutists in vicinity of Perris Valley Arprt.

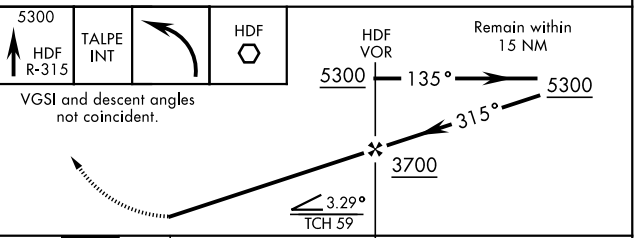
IAF HOMETLAND 113.4 HDF

Max holding alt 6000
Min holding alt 5300

ELEV 1536	TDZE 1497
-----------	-----------



EMERG SAFE ALT 100 NM 13,700



HIRL Rwy 14-32	FAF to MAP 5.2 NM				
Knots	60	90	120	150	180
Min:Sec	5:12	3:28	2:36	2:05	1:44

CATEGORY	A	B	C	D	E
S-32 *	2040/40 543 (600-¾)		2040/60	543	(600-1½)
CIRCLING**	2180-1½ 644 (700-1½)	2260-1½ 724 (800-1½)	2300-2¼ 764 (800-2¼)	2440-3 904 (1000-3)	2840-3 1304 (1400-3)

VOR Y RWY 32

SW-3, 25 FEB 2021 to 25 MAR 2021

SW-3, 25 FEB 2021 to 25 MAR 2021