

LOC I-RIW <b>110.5</b>	APP CRS <b>284°</b>	Rwy Idg TDZE Apt Elev	<b>8204</b> <b>5459</b> <b>5528</b>
---------------------------	------------------------	-----------------------------	---

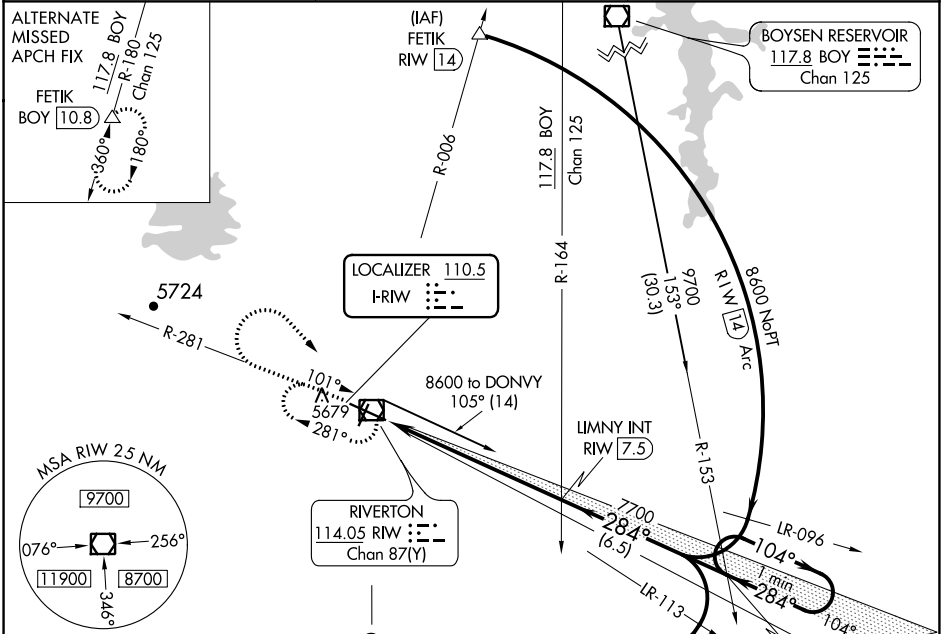
# ILS or LOC RWY 28

CENTRAL WYOMING RGNL (RIW)

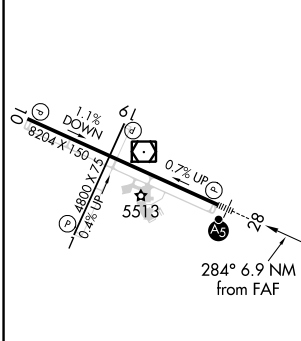
**NA** When local altimeter setting not received, use Lander altimeter setting: increase DA to 5713 feet; increase all MDA 60 feet and S-LOC 28 Cat C and D visibility ¼ mile. For inop MALSRL, when using Lander altimeter setting, increase S-ILS 28 all Cats visibility to ¾ mile and S-LOC 28 Cat C and D visibility to 1 ½ mile. VDP NA when using Lander altimeter setting.

**MALSRL** MISSED APPROACH: Climb to 6800 then climbing right turn to 7700 direct RIW VOR/DME and hold, continue climb-in-hold to 7700.

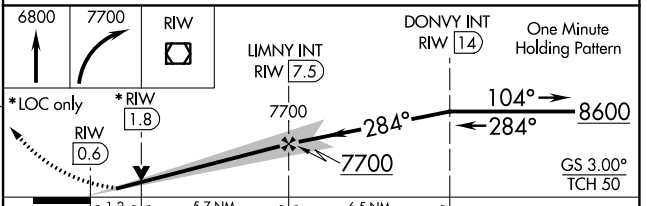
ASOS <b>121.425</b>	SALT LAKE CENTER <b>133.25 285.6</b>	UNICOM <b>122.8 (CTAF)</b>
------------------------	---	-------------------------------



ELEV 5528	<b>D</b>	TDZE 5459
-----------	----------	-----------



REIL Rws 1, 10 and 19	MIRL Rwy 1-19	HIRL Rwy 10-28			
FAF to MAP 6.9 NM					
Knots	60	90	120	150	180
Min:Sec	6:54	4:36	3:27	2:46	2:18



CATEGORY	A	B	C	D
S-ILS 28	5659-½		200 (200-½)	
S-LOC 28	5880-½ 421 (400-½)		5880-¾ 421 (400-¾)	
<b>C</b> CIRCLING	6000-1 472 (500-1)		6000-1½ 592 (500-1½)	

NW-1, 25 FEB 2021 to 25 MAR 2021

NW-1, 25 FEB 2021 to 25 MAR 2021