

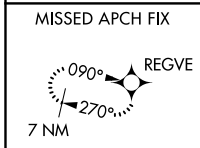
WAAS CH <b>49216</b> W <b>27A</b>	APP CRS <b>270°</b>	Rwy Idg <b>10000</b> TDZE <b>6765</b> Apt Elev <b>6765</b>
---	------------------------	--

# RNAV (GPS) RWY 27

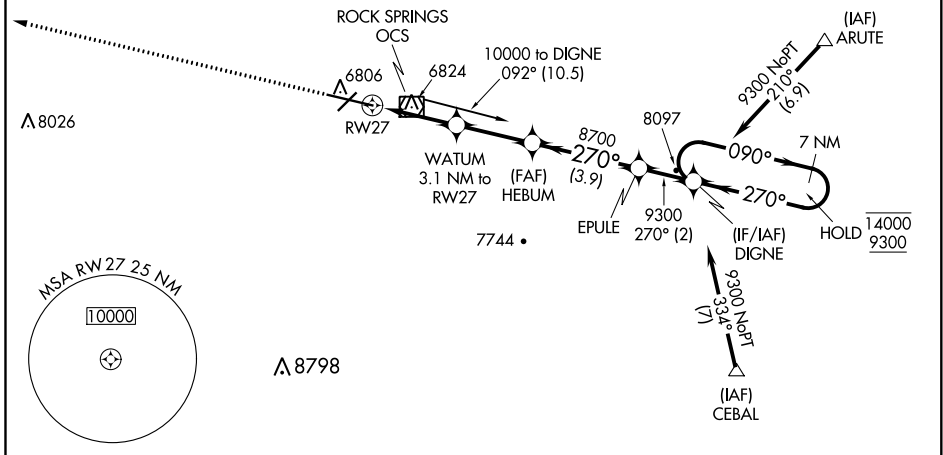
SOUTHWEST WYOMING RGNL (R.K.S)

RNP APCH.	MALSR	MISSED APPROACH: Climb to 9800 direct REGVE and hold.
<p>▼ For uncompensated Baro-VNAV systems, LNAV/VNAV NA below -27°C or above 44°C. For inop ALS increase LNAV/VNAV all Cats visibility to ½ SM.</p>		

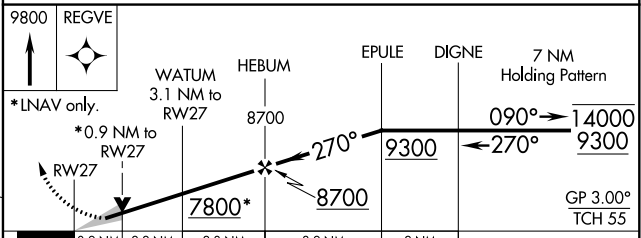
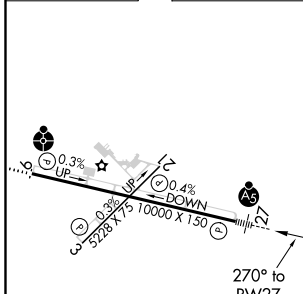
ASOS <b>118.375</b>	SALT LAKE CENTER <b>124.35 353.5</b>	UNICOM <b>122.8 (CTAF) 0</b>
------------------------	---	---------------------------------



Procedure NA for arrivals at OCS VOR/DME on V235 southwest bound, V187 north and southbound and T298 southwest bound.



ELEV 6765	D	TDZE 6765
-----------	---	-----------



CATEGORY	A	B	C	D
LPV DA		6965-½	200 (200-½)	
LNAV/VNAV DA		7036-½	271 (300-½)	
LNAV MDA		7100-½	335 (400-½)	
<input checked="" type="checkbox"/> CIRCLING	7140-1 375 (400-1)	7220-1 455 (500-1)	7220-1½ 455 (500-1½)	7540-2 ½ 775 (800-2 ½)

MIRL Rwy 3-21  
HIRL Rwy 9-27 0  
REIL Rwy 3 and 21 0

NW-1, 25 FEB 2021 to 25 MAR 2021

NW-1, 25 FEB 2021 to 25 MAR 2021