

LOC/DME I-RME 110.1 Chan 38	APP CRS 327°	Rwy ldg 11821 TDZE 498 Apt Elev 504
---	------------------------	--

ILS or LOC RWY 33

GRIFFISS INTL (RME)

DME or RADAR required for LOC only.

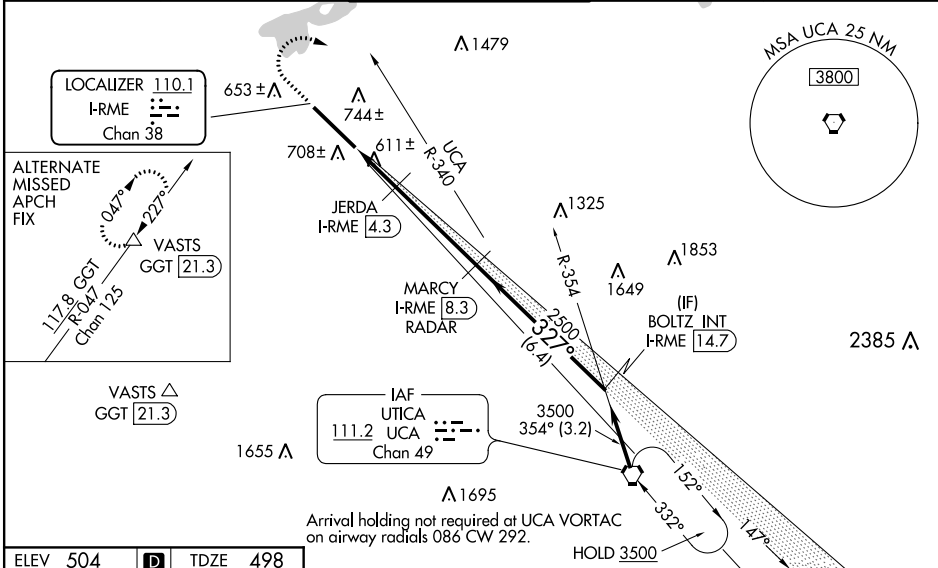
▼ Rwy 33 helicopter visibility reduction below 3/4 SM NA. When local altimeter setting not received, use Syracuse altimeter setting; increase S-ILS 33 DA to 873; increase all MDAs 100 feet and S-LOC 33 Cat C/D visibility 1/4 SM, Circling Cat B/C 1/2 SM and JERDA fix minimums S-LOC 33 Cat C/D 1/4 SM, Circling Cat B/C 1/2 SM. For inop ALS, increase S-ILS 33 all Cats visibility to 2/5 SM, S-LOC 33 Cat A/B to 1 SM, and Cat C/D to 1 1/4 SM and JERDA fix minimums S-LOC 33 Cat A/B to 1 SM. For inop ALS when using Syracuse altimeter setting, increase S-LOC 33 Cat A/B visibility to 1 SM, and Cat C/D to 2 SM and JERDA fix minimums S-LOC 33 Cat A/B to 1 SM. Circling NA southwest of Rwy 15-33.

MALSRL



MISSED APPROACH:
Climb to 1600 then climbing right turn to 3500 on UCA VORTAC R-340 to UCA VORTAC and hold.

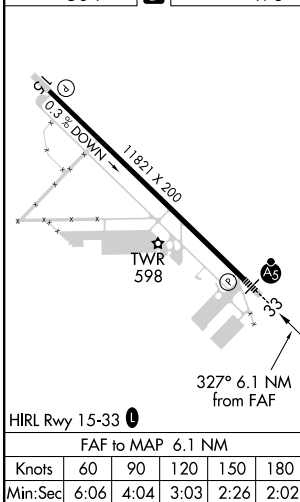
ATIS 118.7	SYRACUSE APP CON 127.425 290.45	GRIFFISS TOWER * 118.1(CTAF) 291.7	GND CON 121.9	UNICOM 122.95
----------------------	---	--	-------------------------	-------------------------



NE-2, 25 FEB 2021 to 25 MAR 2021

NE-2, 25 FEB 2021 to 25 MAR 2021

ELEV 504 **D** TDZE 498



1600	3500	UCA	*1200 when using Syracuse altimeter setting.	
↑	UCA R-340	✈		
*LOC only.				
I-RME [2.2]	*I-RME [3.7]	JERDA I-RME [4.3]	MARCY I-RME [8.3] RADAR	
2500	2500	2500	BOLTZ INT I-RME [14.7]	
1.5 NM	0.6 NM	4 NM	6.4 NM	
GS 3.00°	TCH 56			
CATEGORY	A	B	C	D
S-ILS 33	788-3/4 290 (300-3/4)			
S-LOC 33	1100-3/4	602 (600-3/4)	1100-1 1/8	602 (600-1 1/8)
CIRCLING	1140-1	1260-1	1400-2 3/4	1640-3
	636 (700-1)	756 (800-1)	896 (900-2 3/4)	1136 (1200-3)
JERDA FIX MINIMUMS (DME REQUIRED)				
S-LOC 33	1040-3/4	542 (600-3/4)	1040-1 1/8	542 (600-1 1/8)
CIRCLING	1140-1	1260-1	1400-2 3/4	1640-3
	636 (700-1)	756 (800-1)	896 (900-2 3/4)	1136 (1200-3)