

WAAS CH 82206 W15A	APP CRS 147°	Rwy Idg 11821 TDZE 504 Apt Elev 504
--	------------------------	--

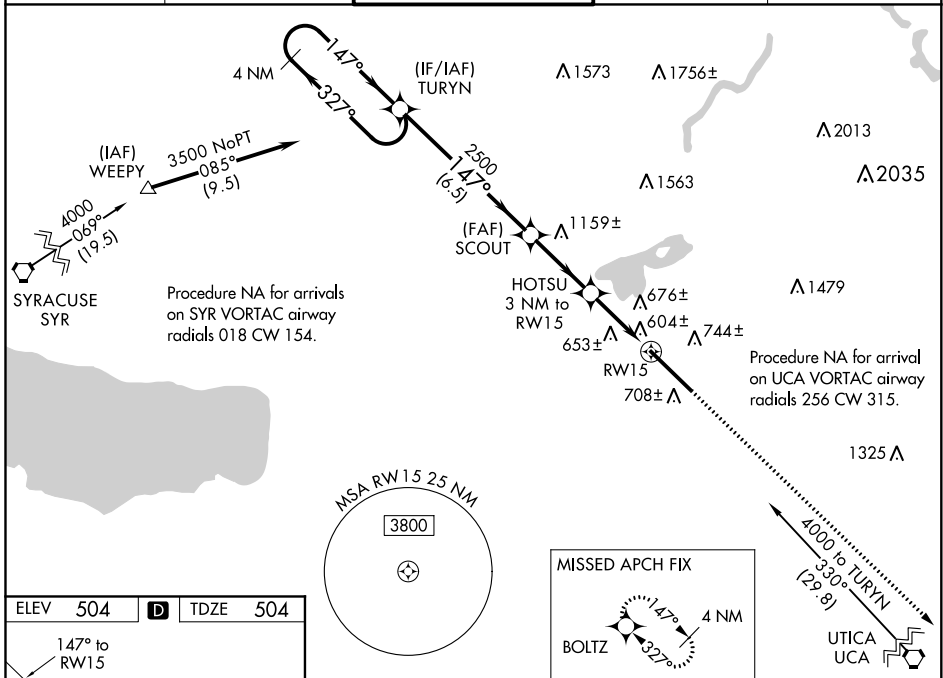
RNAV (GPS) RWY 15

GRIFFISS INTL (RME)

▼ For uncompensated Baro-VNAV systems, LNAV/VNAV NA below -16°C (4°F) or above 48°C (118°F). DME/DME RNP-0.3 NA. When local altimeter setting not received, use Syracuse altimeter setting and increase all DA 100 feet and all MDA 100 feet. Increase LNAV/VNAV all Cats, LNAV Cats C and D and Circling Cats B visibility ¼ mile; Circling Cats C and D visibility ½ mile. Baro-VNAV and VDP NA when using Syracuse altimeter setting. Circling NA west of Rwy 15-33.

▲ MISSED APPROACH: Climb to 3500 direct BOLTZ and hold.

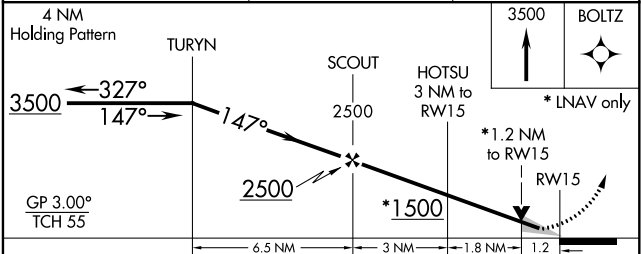
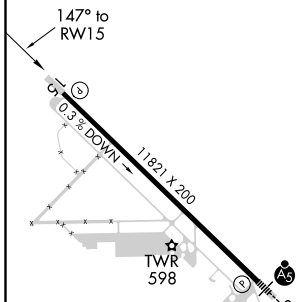
ATIS 118.7	SYRACUSE APP CON 127.425 290.45	GRIFFISS TOWER ★ 118.1 (CTAF) 0 291.7	GND CON 121.9	UNICOM 122.95
----------------------	---	---	-------------------------	-------------------------



NE-2, 25 FEB 2021 to 25 MAR 2021

NE-2, 25 FEB 2021 to 25 MAR 2021

ELEV 504	D	TDZE 504
-----------------	----------	-----------------



CATEGORY	A	B	C	D
LPV DA	704-1 200 (200-1)			
LNAV/VNAV DA	1052-2 548 (600-2)			
LNAV MDA	940-1	436 (500-1)	940-1¼ 436 (500-1¼)	940-1½ 436 (500-1½)
CIRCLING	1140-1 636 (700-1)	1200-1 696 (700-1)	1220-2 716 (800-2)	1300-2½ 796 (800-2½)